

## FC10 TN/12A S1 B BX

Weidmüller Interface GmbH & Co. KG

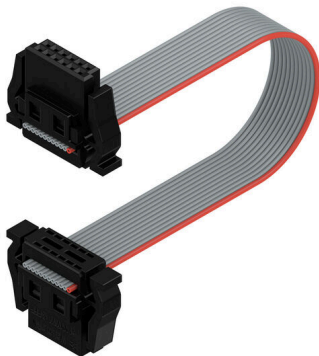
Klingenbergstraße 26

D-32758 Detmold

Germany

www.weidmueller.com

### Product image



#### OMNIMATE® - Board-to-Board connectors

##### Flexible engineering of compact devices

The use of future-proof contact systems, as well as the optimisation of manufacturing processes, are increasingly important in the development of efficient industrial devices, especially in the field of Industry 4.0. OMNIMATE® board-to-board connectors feature a 1.27 mm pitch and offer maximum flexibility due to different designs.

- Flexible device design - Industrial suitable density combined with high flexible connection combinations (Mezzanine, Mother-to-Daughter, Extender-card, Cable-to-Board)
- Automation-Ready - Developed for automatic assembly with high precise pin coplanarity and SMT-fixation
- Reliable contact - Up to 500 mating cycles due to industrial suitable gold-surface (PdNi-Au)
- Process-Ready - High performance LCP material for reflow soldering
- Scalability - Different heights with high contact overlapping ensure various solutions from 12 – 80 poles.
- Robust miniaturisation - simple and safe connection even possible under unfavorable mating conditions – e.g. inclination or offset.

#### General ordering data

Version	PCB plug-in connector, female plug, Pitch in mm (P): 1.27 mm, Number of poles: 12, Box
Order No.	<a href="#">2826910000</a>
Type	FC10 TN/12A S1 B BX
GTIN (EAN)	4064675363514
Qty.	10 items
Product data	IEC: / 1.9 A UL:
Packaging	Box

## FC10 TN/12A S1 B BX

**Weidmüller Interface GmbH & Co. KG**  
 Klingenbergstraße 26  
 D-32758 Detmold  
 Germany

www.weidmueller.com

## Technical data

## Approvals

ROHS	Conform
------	---------

## Dimensions and weights

Net weight	3.37 g
------------	--------

## Environmental Product Compliance

RoHS Compliance Status	Compliant without exemption
REACH SVHC	No SVHC above 0.1 wt%

## System Parameters

Product family	OMNIMATE Signal - Board-to-Board	Type of connection	Insulation displacement connection (IDC)
Wire connection method	IDC terminal	Cable length	100 mm
Pitch in mm (P)	1.27 mm	Pitch in inches (P)	0.050 "
Conductor outlet direction	90°/270°	Number of poles	12
Number of rows	2	Pin series quantity	2
Protection degree	IP20	Volume resistance	<25 mΩ
Plugging cycles	500	Plugging force/pole, max.	0.6 N
Pulling force/pole, max.	0.6 N		

## Material data

Insulating material	LCP	Colour	grey
Colour chart (similar)	RAL 7035	Insulation resistance	≥ 20 MΩ
Moisture Level (MSL)	1	UL 94 flammability rating	V-0
Contact base material	Copper alloy	Contact material	Cu-alloy
Contact surface	Ni/Au	Layer structure of plug contact	≥ 2 μm Ni / ≥ 0.4 μm PdNi / ≥ 0.05 μm Au
Storage temperature, min.	-40 °C	Storage temperature, max.	70 °C
Operating temperature, min.	-40 °C	Operating temperature, max.	125 °C

## Conductors suitable for connection

Wire connection cross section AWG, min.	AWG 30/1, 30/7	Wire connection cross section AWG, max.	AWG 30/1, 30/7
---	----------------	---	----------------

## Rated data acc. to IEC

Rated current, min. number of poles (Tu=20°C)	1.9 A	Creepage distance, min.	0.4 mm
Clearance, min.	0.4 mm		

## Packing

Packaging	Box	VPE length	127.00 mm
VPE width	89.00 mm	VPE height	24.00 mm

## Important note

IPC conformity	Conformity: The products are developed, manufactured and delivered according international recognized standards and norms and comply with the assured properties in the data sheet resp. fulfill decorative properties in accordance with IPC-A-610 "Class 2". Further claims on the products can be evaluated on request.
----------------	--

**FC10 TN/12A S1 B BX**

**Weidmüller Interface GmbH & Co. KG**  
Klingenbergstraße 26  
D-32758 Detmold  
Germany

[www.weidmueller.com](http://www.weidmueller.com)

**Technical data**

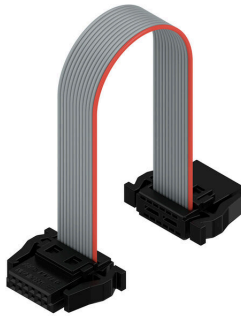
Notes

**Classifications**

ETIM 8.0	EC002599	ETIM 9.0	EC002599
ETIM 10.0	EC002599	ECLASS 14.0	27-06-03-08
ECLASS 15.0	27-06-03-08		

Drawings

Product image



With optional strain relief



Three standard lengths (0.1 m, 0.2 m, and 0.5 m)