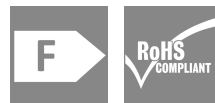


WIL-LWXXXX-4000D024-655SXX0.3BM12GXXXX

Weidmüller Interface GmbH & Co. KG
Klingenbergstraße 26
D-32758 Detmold
Germany

www.weidmueller.com



The WIL-LED lights family: Only 8mm (9.4mm with magnet) high LED lamp for 24V DC with very high luminous efficacy and high Lifespan (greater 60 000h). Very robust construction, by full potting and metal housing - waterproof (IP67). Due to its 4000K light color, neutral white, suitable for the various applications. Very easy to connect thanks to the M12 connection. Due to the low power consumption, a small enough power supply with 24V for operation.

General ordering data

Order No.	282 1220000
Type	WIL-LWXXXX-4000D024-655SXX0.3B-M12GXXXX
GTIN (EAN)	4064675358664
Qty.	1 items

WIL-LWXXXX-4000D024-655SXX0.3BM12GXXXX

Weidmüller Interface GmbH & Co. KG
 Klingenbergstraße 26
 D-32758 Detmold
 Germany

www.weidmueller.com

Technical data

Approvals

Approvals



ROHS Conform

UL File Number Search [UL Website](#)

Certificate no. (cULus) E354496

Dimensions and weights

Depth	40 mm	Depth (inches)	1.5748 inch
Height	8 mm	Height (inches)	0.315 inch
Width	145 mm	Width (inches)	5.7086 inch
Net weight	226 g		

Temperatures

Operating temperature -20 - 60°C

Environmental Product Compliance

RoHS Compliance Status	Compliant with exemption
RoHS Exemption (if applicable/known)	6c
REACH SVHC	Lead 7439-92-1
SCIP	bf1e8170-69bb-4440-b3e0-4da351a9a3b0
EPREL Registration number	1324435

Cable technical specifications

Cable Material	PUR	Sheathing colour	black
Housing main material	hard anodised aluminium	Cable length	0.3 m
Core cross-section	0.34 mm ²		

Connection data

LED Modul is attachable	no	Version	pin, straight
Coding	A-coded	Connection thread	M12
Tightening torque	0.8 Nm	Wiring	Pin 4 (Strand: black) control white LED, Pin 3 (Strand: blue)

Electric data

Rated voltage	24 V DC	Rated current	0.924 A
Power	22.6 W	Dimmable	Yes

General technical data

Type of connection	Pre-assembled cable	Electronic equipment on rolling stock	No
Recommended class according to UL for NEC Class 2 use of an power supply		Shape of the LED module	Rectangular
Number of LEDs	42	Light colour (CCT)	4000K, Neutral white
Light current	2718 lm	Emitting angle	40 °
Illumination level	830 lux	Operating life	60.000 h
Type of mounting	Screw mounting	Drill hole spacing	640 mm

WIL-LWXXXX-4000D024-655SXX0.3BM12GXXXX

Weidmüller Interface GmbH & Co. KG
 Klingenbergstraße 26
 D-32758 Detmold
 Germany

www.weidmueller.com

Technical data

Impact resistance	IK05	Protection degree	IP67
Efficiency class (according to EU Directive No. 874/2012)	Not required		

Material data

Material of LED cover	ESG	Housing main material	hard anodised aluminium
Threaded ring material	PA	Material of end caps	PBT

Classifications

ETIM 8.0	EC000996	ETIM 9.0	EC000996
ETIM 10.0	EC000996	ECLASS 14.0	27-11-06-35
ECLASS 15.0	27-11-06-35		

WIL-LWXXXX-4000D024-655SXX0.3BM12GXXXX

Weidmüller Interface GmbH & Co. KG
 Klingenbergstraße 26
 D-32758 Detmold
 Germany

www.weidmueller.com

Accessories

PUR halogen-free black (U)



Sensor/actuator cables are used for wiring sensors and actuators and for transmitting data or power in various applications. The moulded cable offers connected and tested connection of the plug-in connector to the cable ex-works. The cables may be exposed to a wide range of conditions, such as humidity, dust, heat, cold, shock or vibration.

Our developers have focused specifically on this issue and designed a host of different M8 and M12 sensor-actuator cables so you are bound to find the solution you need for your application.

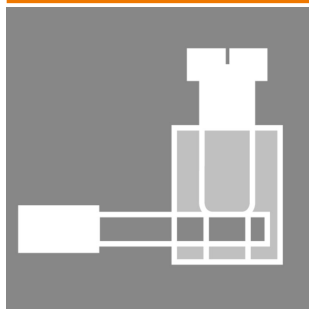
The M8 and M12 sensor-actuator cables are supplied as standard with brass nickel-plated nuts. However if you are looking to use our products in an extremely harsh environment, we can also supply a variant with a plastic nut. This enables use in environments where cables with nickel-plated M8 and M12 nuts would rust.

Is there something you have not managed to find or you feel needs explanation? Talk to us!

General ordering data

Type	SAIP-M12BG-3-3.0U	Version
Order No.	1108730300	Sensor/actuator line, One end without connector, M12, Number of
GTIN (EAN)	4032248888481	poles : 3, 3 m, Female socket, straight, Shielded: No, LED: No, Sheath
Qty.	1 ST	material: PUR, Halogen: No
Type	SAIL-M12BG-3-3.0U	Version
Order No.	9457820300	Sensor/actuator line, One end without connector, M12, Number of
GTIN (EAN)	4032248228195	poles : 3, 3 m, Female socket, straight, Shielded: No, LED: No, Sheath
Qty.	1 ST	material: PUR, Halogen: No

Screw terminal connector



Individual cable lengths are often required nowadays. In order to meet these demands, Weidmüller offers a wide range of plug-in connectors for custom assembly.

Male plugs and female socket for customisable assembly for M8, M12, M16 and 7/8" connections which are highly robust and ideally suited to machine engineering, for instance. The M12 plug-in connectors offer a choice of 5 different connection systems.

The screw connection can be used in a wide range of applications. With this technology the conductor, optionally with wire-end ferrules, can be plugged into connection elements and secured with a screw. It is the classic, cheapest form of connection technology that also supports multi-conductor connections.

General ordering data

Type	SAIBGS-P-4A-4/6-M12	Version
Order No.	9457240000	Field attachable connector, M12
GTIN (EAN)	4008190312275	
Qty.	1 ST	

WIL-LWXXXX-4000D024-655SXX0.3BM12GXXXX

Weidmüller Interface GmbH & Co. KG
 Klingenbergstraße 26
 D-32758 Detmold
 Germany

www.weidmueller.com

Accessories

Type	SAISGS-P-4A-4/6-M12	Version
Order No.	9457550000	Field attachable connector, M12
GTIN (EAN)	4032248167647	
Qty.	1 ST	

Motion sensor screw connection


Motion detector for the WIL-LED luminaire with screw connection. Switching time adjustable.

General ordering data

Type	WIL-BM-SK	Version
Order No.	2537720000	
GTIN (EAN)	4050118549157	
Qty.	1 ST	

Motion sensor screw connection with cable


Motion detector for the WIL-LED luminaire with screw connection, 3m supply cable and M12 cable for connection to the WIL lamp. Switching time adjustable.

General ordering data

Type	WIL-BM-SK-M12-3.0U	Version
Order No.	2537700000	
GTIN (EAN)	4050118549140	
Qty.	1 ST	

WIL-LWXXXX-4000D024-655SXX0.3BM12GXXXX
Weidmüller Interface GmbH & Co. KG
 Klingenbergstraße 26
 D-32758 Detmold
 Germany

www.weidmueller.com

Accessories

Magnet



Magnet for WIL lights with 240mm total length, self-adhesive

Magnet

General ordering data

Type	WIL-MAGNET	Version	
Order No.	2526810000		
GTIN (EAN)	4050118537871		
Qty.	1 ST		

Motion sensor Jackpac®



Motion detector for the WIL-LED luminaire with screw connection, 3m supply cable and M12 cable for connection to the WIL lamp. Switching time adjustable.

General ordering data

Type	WIL-BM-JP-M12-3.0U	Version	
Order No.	2537710000		
GTIN (EAN)	4050118549164		
Qty.	1 ST		

Door switch



The WIL door switch is pre-assembled with an M12 cable and an access line. This allows for a simple Plug and Produce feature with our WIL LED lamp series.

Door Switch

General ordering data

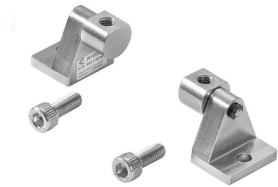
Type	WIL-TS-M12	Version	
Order No.	2537730000		
GTIN (EAN)	4050118549188		
Qty.	1 ST		

WIL-LWXXXX-4000D024-655SXX0.3BM12GXXXX
Weidmüller Interface GmbH & Co. KG
 Klingenbergstraße 26
 D-32758 Detmold
 Germany

www.weidmueller.com

Accessories

Swivelling holder



Swivel bracket for WIL lights Very high quality version without detent

Swivelling holder

General ordering data

Type	WIL-SCHWENKHALTER	Version	
Order No.	2614220000		
GTIN (EAN)	4050118651249		
Qty.	1 ST		

WIL power supply



Power supply IP65 for WIL standard family 85V-264V AC input, 24V DC output 400mA

Power Supply

General ordering data

Type	WIL-NT-STANDARD	Version	
Order No.	2598350000		
GTIN (EAN)	4050118611168		
Qty.	1 ST		

Connect Power INSTA POWER



The single-phase INSTA-POWER switching power supplies are characterised by a wide power spectrum, compact design and good value for money. They are suitable for temperature ranges from -25°C to +70°C, have international approvals and a wide voltage input range. This makes them suitable for a wide range of applications. This also includes signal and telecommunications systems as well as automation systems with a low power requirement up to 96 Watt.

General ordering data

Type	PRO INSTA 30W 24V 1.3A	Version	
Order No.	2580190000	Power supply, switch-mode power supply unit, 24 V	
GTIN (EAN)	4050118590920		
Qty.	1 ST		