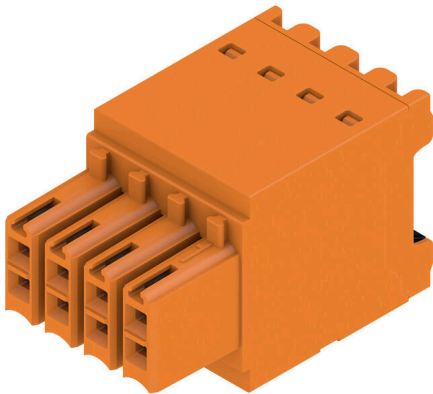


**B2CF 3.50/08/180 SN OR BX SO**

**Weidmüller Interface GmbH & Co. KG**  
Klingenbergstraße 26  
D-32758 Detmold  
Germany

www.weidmueller.com

**Product image**

similar to illustration

Two-row female plug with PUSH IN spring connection

- Simply insert the prepared wire - and you're done
- Intuitive to use because
- the wire-entry area and handling area are clearly separated
- Integrated push-buttons for opening the terminal point
- High component density because of low heights
- Optional: locking and releasing require no tools when using Weidmüller's release latch (LR) or release lever (LH)

**General ordering data**

|            |  |
|------------|--|
| Order No.  | 2799660000                                   |
| Type       | <a href="#">B2CF 3.50/08/180 SN OR BX SO</a> |
| GTIN (EAN) | 4064675262435                                |
| Qty.       | 132 items                                    |
| Packaging  | Box  |

## B2CF 3.50/08/180 SN OR BX SO

Weidmüller Interface GmbH & Co. KG

Klingenbergstraße 26  
D-32758 Detmold  
Germany

www.weidmueller.com

## Technical data

### Dimensions and weights

|            |          |                 |             |
|------------|----------|-----------------|-------------|
| Depth      | 25.25 mm | Depth (inches)  | 0.9941 inch |
| Height     | 15.2 mm  | Height (inches) | 0.5984 inch |
| Width      | 14 mm    | Width (inches)  | 0.5512 inch |
| Net weight | 5.27 g   |                 |             |

### Environmental Product Compliance

|                          |                             |                              |  |
|--------------------------|-----------------------------|------------------------------|--|
| RoHS Compliance Status   | Compliant without exemption |                              |  |
| REACH SVHC               | No SVHC above 0.1 wt%       |                              |  |
| Product Carbon Footprint | Cradle to gate              | 0.119 kg CO <sub>2</sub> eq. |  |

### System Parameters

|  |                    |  |                          |
|--|--------------------|--|--------------------------|
| Type of connection                         | Field connection   | Wire connection method                       | PUSH IN with push button |
| Pitch in mm (P)                            | 3.50 mm            | Pitch in inches (P)                          | 0.138 "                  |
| Conductor outlet direction                 | 180°               | Number of poles                              | 8                        |
| L1 in mm                                   | 10.50 mm           | L1 in inches                                 | 0.413 "                  |
| Number of rows                             | 1                  | Pin series quantity                          | 2                        |
| Rated cross-section                        | 15 mm <sup>2</sup> | Touch-safe protection acc. to DIN VDE 57 106 | Safe from finger touch   |
| Touch-safe protection acc. to DIN VDE 0470 | IP20 plugged       | Protection degree                            | IP20, when fully mounted |
| Can be coded                               | Yes                | Stripping length                             | 10 mm                    |
| Screwdriver blade                          | 0.4 x 2.5          | Screwdriver blade standard                   | DIN 5264                 |
| Plugging cycles                            | 25                 |  |                          |

### Material data

|                                       |             |                                       |              |
|---------------------------------------|-------------|---------------------------------------|--------------|
| Insulating material                   | PA 66 GF 30 | Colour                                | orange       |
| Colour of operational elements        | black       | Colour chart (similar)                | RAL 2000     |
| Insulating material group             | II          | Comparative Tracking Index (CTI)      | ≥ 600        |
| Insulation resistance                 | ≥ 108 Ω     | Moisture Level (MSL)                  |              |
| UL 94 flammability rating             | V-0         | Contact material                      | Copper alloy |
| Contact surface                       | tinned      | Storage temperature, min.             | -40 °C       |
| Storage temperature, max.             | 70 °C       | Operating temperature, min.           | -50 °C       |
| Operating temperature, max.           | 120 °C      | Temperature range, installation, min. | -40 °C       |
| Temperature range, installation, max. | 120 °C      |                                       |              |

### Conductors suitable for connection

|   |                      |   |                     |
|---|----------------------|---|---------------------|
| Clamping range, min.                            | 0.14 mm <sup>2</sup> | Clamping range, max.                            | 1.5 mm <sup>2</sup> |
| Wire connection cross section AWG, min.         | AWG 30               | Wire connection cross section AWG, max.         | AWG 16              |
| Solid, min. H05(07) V-U                         | 0.14 mm <sup>2</sup> | Solid, max. H05(07) V-U                         | 1.5 mm <sup>2</sup> |
| Flexible, min. H05(07) V-K                      | 0.14 mm <sup>2</sup> | Flexible, max. H05(07) V-K                      | 1.5 mm <sup>2</sup> |
| w. plastic collar ferrule, DIN 46228 pt 4, min. | 0.14 mm <sup>2</sup> | w. plastic collar ferrule, DIN 46228 pt 4, max. | 1 mm <sup>2</sup>   |
| w. wire end ferrule, DIN 46228 pt 1, min.       | 0.14 mm <sup>2</sup> | w. wire end ferrule, DIN 46228 pt 1, max.       | 1.5 mm <sup>2</sup> |

### Rated data acc. to IEC

|  |                        |  |        |
|--|------------------------|--|--------|
| tested acc. to standard                                    | IEC 60664-1, IEC 61984 | Rated current, min. number of poles (T <sub>u</sub> =20°C) | 13.4 A |
| Rated current, max. number of poles (T <sub>u</sub> =20°C) | 10 A                   | Rated current, min. number of poles (T <sub>u</sub> =40°C) | 12 A   |

## B2CF 3.50/08/180 SN OR BX SO

**Weidmüller Interface GmbH & Co. KG**  
 Klingenbergstraße 26  
 D-32758 Detmold  
 Germany

www.weidmueller.com

### Technical data

|   |        |   |                  |
|---|--------|---|------------------|
| Rated current, max. number of poles (Tu=40°C)                             | 9 A    | Rated voltage for surge voltage class / pollution degree II/2         | 320 V            |
| Rated voltage for surge voltage class / pollution degree III/2            | 160 V  | Rated voltage for surge voltage class / pollution degree III/3        | 160 V            |
| Rated impulse voltage for surge voltage class/ pollution degree II/2      | 2.5 kV | Rated impulse voltage for surge voltage class/ pollution degree III/2 | 2.5 kV           |
| Rated impulse voltage for surge voltage class/ contamination degree III/3 | 2.5 kV | Short-time withstand current resistance                               | 3 x 1s with 80 A |

#### Rated data acc. to CSA

|                                   |        |                                   |        |
|-----------------------------------|--------|-----------------------------------|--------|
| Rated voltage (Use group B / CSA) | 300 V  | Rated voltage (Use group C / CSA) | 50 V   |
| Rated voltage (Use group D / CSA) | 300 V  | Rated current (Use group B / CSA) | 9.5 A  |
| Rated current (Use group C / CSA) | 9.5 A  | Rated current (Use group D / CSA) | 9.5 A  |
| Wire cross-section, AWG, min.     | AWG 30 | Wire cross-section, AWG, max.     | AWG 16 |

#### Rated data acc. to UL 1059

|                                       |        |                                       |        |
|---------------------------------------|--------|---------------------------------------|--------|
| Rated voltage (Use group B / UL 1059) | 300 V  | Rated voltage (Use group C / UL 1059) | 50 V   |
| Rated voltage (Use group D / UL 1059) | 300 V  | Rated current (Use group B / UL 1059) | 9.5 A  |
| Rated current (Use group C / UL 1059) | 9.5 A  | Rated current (Use group D / UL 1059) | 9.5 A  |
| Wire cross-section, AWG, min.         | AWG 30 | Wire cross-section, AWG, max.         | AWG 16 |

#### Packing

|           |           |            |           |
|-----------|-----------|------------|-----------|
| Packaging | Box       | VPE length | 349.00 mm |
| VPE width | 144.00 mm | VPE height | 34.00 mm  |

#### Important note

Notes

#### Classifications

|             |             |             |             |
|-------------|-------------|-------------|-------------|
| ETIM 8.0    | EC002638    | ETIM 9.0    | EC002638    |
| ETIM 10.0   | EC002638    | ECLASS 14.0 | 27-46-02-02 |
| ECLASS 15.0 | 27-46-02-02 |             |             |

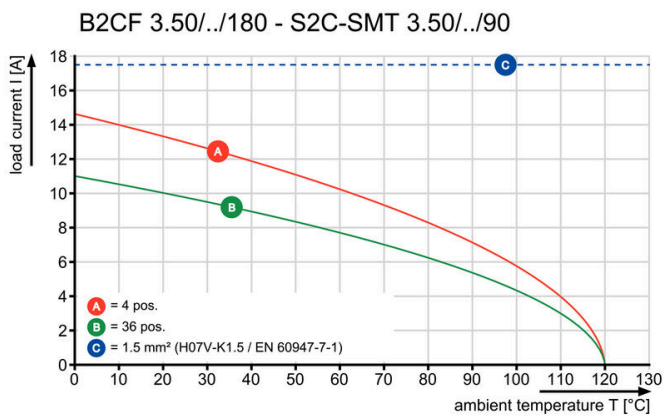
## B2CF 3.50/08/180 SN OR BX SO

**Weidmüller Interface GmbH & Co. KG**  
Klingenbergstraße 26  
D-32758 Detmold  
Germany

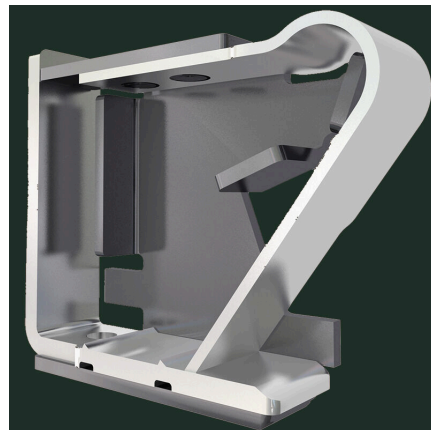
# Drawings

[www.weidmueller.com](http://www.weidmueller.com)

### Graph



### Product benefits



Solid PUSH IN contact Safe and durable

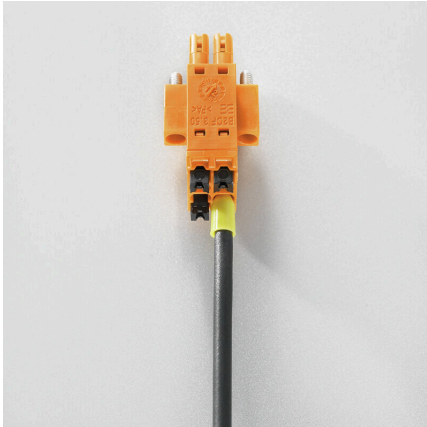
**B2CF 3.50/08/180 SN OR BX SO**

**Weidmüller Interface GmbH & Co. KG**  
Klingenbergstraße 26  
D-32758 Detmold  
Germany

[www.weidmueller.com](http://www.weidmueller.com)

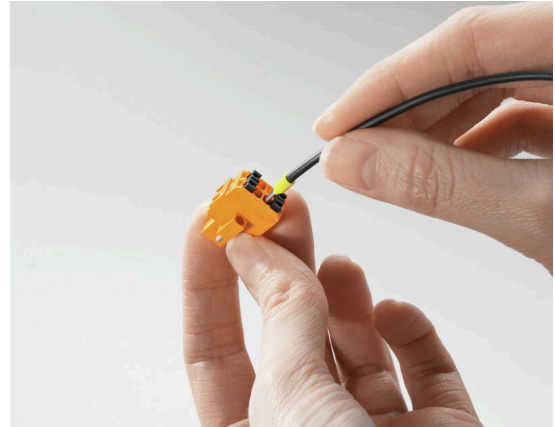
**Drawings**

**Product benefits**



Large connection cross-section  
Up to 1.5 mm possible with ease

**Product benefits**



Fast PUSH IN connection  
Tool-free and touch-safe

**Example of use**

