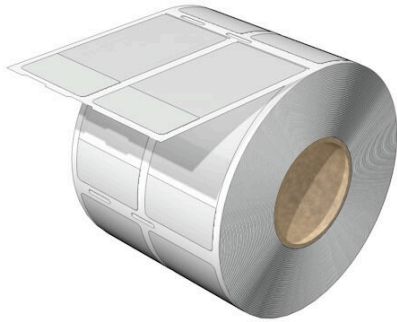


**THM WO VIN 34/70 WS**

**Weidmüller Interface GmbH & Co. KG**  
Klingenbergstraße 26  
D-32758 Detmold  
Germany

[www.weidmueller.com](http://www.weidmueller.com)



THM WriteOn cable markers on reels are used for labelling conductors and cables with an outside diameter of up to 36 mm. The transparent adhesive strip fixes and protects the printing on the marker surface.

- Protection of the marking against dirt and abrasion by wrapping it with the transparent adhesive strip
- Simple and quick printing with the high-quality thermal transfer printers

**General ordering data**

Version	THM, Conductor and cable markers, 8 - 16 mm, 34 x 70 mm, white
Order No.	<a href="#">2799250000</a>
Type	THM WO VIN 34/70 WS
GTIN (EAN)	4064675261018
Qty.	500 items

**THM WO VIN 34/70 WS**

**Weidmüller Interface GmbH & Co. KG**  
 Klingenbergstraße 26  
 D-32758 Detmold  
 Germany

www.weidmueller.com

**Technical data**

**Approvals**

ROHS Conform

**Dimensions and weights**

Depth	0.08 mm	Depth (inches)	0.0031 inch
Height	34 mm	Height (inches)	1.3386 inch
Width	70 mm	Width (inches)	2.7559 inch
Net weight	0.54 g		

**Temperatures**

Operating temperature range -40...80 °C

**Environmental Product Compliance**

RoHS Compliance Status Compliant without exemption  
 REACH SVHC No SVHC above 0.1 wt%

**General data**

Type of printing	neutral		
Width	70 mm		
UL 94 flammability rating	V-0		
Operating temperature range, max.	80 °C		
Operating temperature range, min.	-40 °C		
Colour	white		
Halogen	Yes		
Basic material	Vinyl film		
Printed characters	without		
Number of markers per packaging unit compatible printer	Form of supply	Label reel	
Number of markers per combination	1 Label reel = Conductor and cable markers		
Operating temperature range	-40...80 °C		
Number per roll	500		

**Conductor and cable markers**

Halogen	Yes	Conductor cross-section, max.	200 mm <sup>2</sup>
Conductor O.D., max.	16 mm	Conductor O.D., min.	8 mm
Conductor O.D.	8 - 16 mm	Cross-section for connected wire	200 mm <sup>2</sup>

**Classifications**

ETIM 8.0	EC001530	ETIM 9.0	EC001530
ETIM 10.0	EC001530	ECLASS 14.0	27-28-11-02
ECLASS 15.0	27-28-11-02		

**Drawings**

