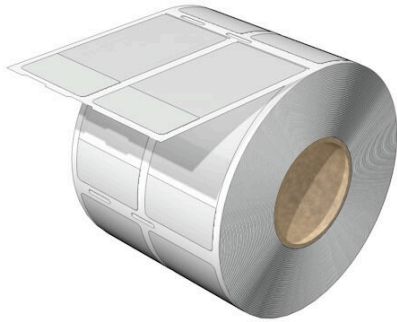


THM WO VIN 34/70 WS

Weidmüller Interface GmbH & Co. KG
Klingenbergstraße 26
D-32758 Detmold
Germany

www.weidmueller.com



THM WriteOn cable markers on reels are used for labelling conductors and cables with an outside diameter of up to 36 mm. The transparent adhesive strip fixes and protects the printing on the marker surface.

- Protection of the marking against dirt and abrasion by wrapping it with the transparent adhesive strip
- Simple and quick printing with the high-quality thermal transfer printers

General ordering data

Version	THM, Conductor and cable markers, 8 - 16 mm, 34 x 70 mm, white
Order No.	2799250000
Type	THM WO VIN 34/70 WS
GTIN (EAN)	4064675261018
Qty.	500 items

THM WO VIN 34/70 WS

Weidmüller Interface GmbH & Co. KG
Klingenbergstraße 26
D-32758 Detmold
Germany

www.weidmueller.com

Technical data

Approvals

ROHS	Conform
------	---------

Dimensions and weights

Depth	0.08 mm	Depth (inches)	0.0031 inch
Height	34 mm	Height (inches)	1.3386 inch
Width	70 mm	Width (inches)	2.7559 inch
Net weight	0.54 g		

Temperatures

Operating temperature range	-40...80 °C
-----------------------------	-------------

Environmental Product Compliance

RoHS Compliance Status	Compliant without exemption
REACH SVHC	No SVHC above 0.1 wt%

General data

Type of printing	neutral	
Width	70 mm	
UL 94 flammability rating	V-0	
Operating temperature range, max.	80 °C	
Operating temperature range, min.	-40 °C	
Colour	white	
Halogen	Yes	
Basic material	Vinyl film	
Printed characters	without	
Number of markers per packaging unit compatible printer	Form of supply	Label reel
Number of markers per combination	1 Label reel = Conductor and cable markers	
Operating temperature range	-40...80 °C	
Number per roll	500	

Conductor and cable markers

Halogen	Yes	Conductor cross-section, max.	200 mm ²
Conductor O.D., max.	16 mm	Conductor O.D., min.	8 mm
Conductor O.D.	8 - 16 mm	Cross-section for connected wire	200 mm ²

Classifications

ETIM 8.0	EC001530	ETIM 9.0	EC001530
ETIM 10.0	EC001530	ECLASS 14.0	27-28-11-02
ECLASS 15.0	27-28-11-02		

Drawings

