

CUTFIX PRO FEEDER

Weidmüller Interface GmbH & Co. KG
Klingenbergstraße 26
D-32758 Detmold
Germany

www.weidmueller.com



- For automatically cutting individual wires to length
- High repeat accuracy due to the precise servo DC drive
- Interface for controlling the automatic cutter via an IBM-compatible PC

General ordering data

Version	Automatic machines, Cutting machine
Order No.	2797200000
Type	CUTFIX PRO FEEDER
GTIN (EAN)	4064675213215
Qty.	1 items

CUTFIX PRO FEEDER

Weidmüller Interface GmbH & Co. KG
 Klingenbergstraße 26
 D-32758 Detmold
 Germany

www.weidmueller.com

Technical data

Approvals

Approvals



ROHS Conform

Dimensions and weights

Depth	370 mm	Depth (inches)	14.5669 inch
Height	250 mm	Height (inches)	9.8425 inch
Width	300 mm	Width (inches)	11.811 inch
Net weight	13000 g		

Environmental Product Compliance

RoHS Compliance Status	Compliant with exemption
RoHS Exemption (if applicable/known)	6c, 7a, 7cl
REACH SVHC	Lead 7439-92-1
SCIP	d2df479e-2b79-4e98-adc7-b03577df98ae

Automatic cutting

Connected load	0.1 kW	Amount pre-selection, max.	Adjustable part quantity code
Drive	electrical	Keyboard	Touch display
Indicator display	LCD display	Length pre-selection, max.	999999 mm
Length pre-selection, min.	10 mm	Software	for data exchanging with IBM-compatible PC
Aperture (max. diameter)	8 mm outer diameter	Electrical connection	100 - 240 V AC / 50/60 Hz
Flexible/solid individual conductors	max. 10 mm ² / max. 2.5 mm ²		

Classifications

ETIM 8.0	EC002778	ETIM 9.0	EC002778
ETIM 10.0	EC002778	ECLASS 14.0	17-13-01-01
ECLASS 15.0	17-13-01-01		

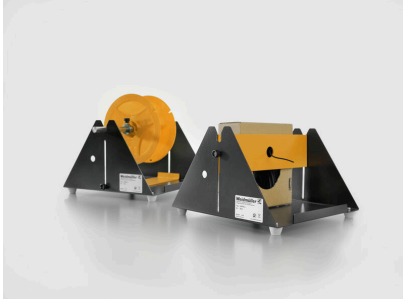
CUTFIX PRO FEEDER

Weidmüller Interface GmbH & Co. KG
Klingenbergstraße 26
D-32758 Detmold
Germany

www.weidmueller.com

Accessories

Accessories / replacement parts



- For automatically cutting individual wires to length
- High repeat accuracy due to the precise servo DC drive
- Interface for controlling the automatic cutter via an IBM-compatible PC

General ordering data

Type	AIMESA V CUTFIX	Version	
Order No.	9054740000	Accessories, Replacement part	
GTIN (EAN)	4032248 1045 12		
Qty.	1 ST		