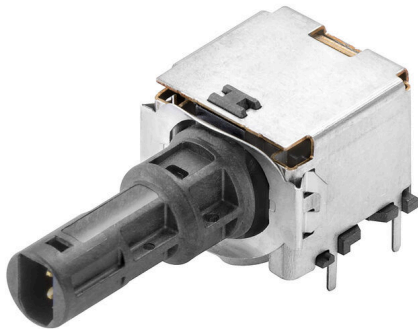


IE-PCB-SPM-P-90-THR

Weidmüller Interface GmbH & Co. KG

Klingenbergstraße 26
D-32758 Detmold
Germany

www.weidmueller.com



SPElink®



Single Pair Ethernet PCB sockets

Single pair Ethernet is a technology that only requires one pair of wires to transmit data and power.

The resulting benefits will make SPE the preferred network at the field level and beyond.

Advantages of Single Pair Ethernet:

- Consistent: Single Pair Ethernet enables uniform Ethernet-based communication from the sensor to the cloud
- Future-proof: key technology for Industry 4.0 and IIoT
- Flexible: ranges of up to 1000 m and transmission properties of up to 1 Gbps enable use across applications
- Innovative: lighter, less space required, and reduced installation effort

General ordering data

| | |
|-----------------|---|
| Version | Built-in plugs, M8 PCB insert, Solder connection, IP67 with housing, THT/THR solder connection, 90°, Number of poles: 2, Tape |
| Order No. | 2795100000 |
| Type | IE-PCB-SPM-P-90-THR |
| GTIN (EAN) | 4064675119159 |
| Qty. | 100 items |
| Packaging | Tape |
| Delivery status | This article will no longer be available in the future. |
| Available until | 2026-06-30T00:00:00+02:00 |

IE-PCB-SPM-P-90-THR

Weidmüller Interface GmbH & Co. KG

Klingenbergstraße 26

D-32758 Detmold

Germany

www.weidmueller.com

Technical data

Approvals

ROHS Conform

Dimensions and weights

| | | | |
|------------|---------|-----------------|-------------|
| Depth | 31.6 mm | Depth (inches) | 1.2441 inch |
| Height | 14.5 mm | Height (inches) | 0.5709 inch |
| Width | 15.2 mm | Width (inches) | 0.5984 inch |
| Net weight | 8.14 g | | |

Temperatures

| | | |
|--------------------------|-----------------------|----------------|
| Storage temperature | Operating temperature | -40 °C...85 °C |
| Installation temperature | | |

Environmental Product Compliance

| | |
|------------------------|-----------------------------|
| RoHS Compliance Status | Compliant without exemption |
| REACH SVHC | No SVHC above 0.1 wt% |

System specifications

| | | | |
|-------------------|--|----------------------------------|---------------------------|
| Number of poles | 2 | Mounting onto the PCB | THT/THR solder connection |
| Shielding | Yes | Side termination, characteristic | Clip-on flange |
| Transmission rate | 10/100/1000 MBit/s | Type of connection | Solder connection |
| Category | T1-B | Product family | Industrial Ethernet |
| Protection degree | IP67 with housing | Plugging cycles | ≥ 100 |
| Outgoing elbow | 90° | Performance-Category | T1-B 10/100/1000 MBit/s |
| Soldering process | Reflow soldering, Manual soldering, Wave soldering | Solder pin dimensions | Octagonal |

Electrical properties

| | | | |
|---------------------------------------|-----------|--|-----------|
| Dielectric strength, contact / shield | 2250 V DC | Dielectric strength, contact / contact | 1000 V DC |
| Insulation resistance | ≥ 500 MΩ | Nominal voltage | 72 V |
| Rated current | 4 A | | |

Standards

Connector standard IEC 63171-5

Material data

| | | | |
|-----------------------------|--------------------|-----------------------------|---------------|
| Insulating material | LCP | Colour | silver, black |
| Colour chart (similar) | RAL 7001, RAL 9011 | Insulation resistance | ≥ 500 MΩ |
| Moisture Level (MSL) | 1 | UL 94 flammability rating | V-0 |
| Contact material | Copper alloy | Contact surface | Ni/Au |
| Operating temperature, min. | -40 °C | Operating temperature, max. | 85 °C |

Packing

| | | | |
|-----------|-----------|------------|-----------|
| Packaging | Tape | VPE length | 392.00 mm |
| VPE width | 350.00 mm | VPE height | 75.00 mm |

IE-PCB-SPM-P-90-THR

Weidmüller Interface GmbH & Co. KG
Klingenbergstraße 26
D-32758 Detmold
Germany

www.weidmueller.com

Technical data

Important note

Notes

Classifications

| | | | |
|-------------|-------------|-------------|-------------|
| ETIM 8.0 | EC002637 | ETIM 9.0 | EC002637 |
| ETIM 10.0 | EC002637 | ECLASS 14.0 | 27-46-02-01 |
| ECLASS 15.0 | 27-46-02-01 | | |

IE-PCB-SPM-P-90-THR

Weidmüller Interface GmbH & Co. KG
Klingenbergstraße 26
D-32758 Detmold
Germany

Drawings

www.weidmueller.com

