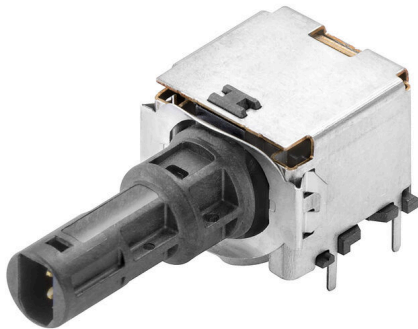


## IE-PCB-SPM-P-90-THR

**Weidmüller Interface GmbH & Co. KG**

Klingenbergstraße 26  
D-32758 Detmold  
Germany

[www.weidmueller.com](http://www.weidmueller.com)



SPElink®



### Single Pair Ethernet PCB sockets

Single pair Ethernet is a technology that only requires one pair of wires to transmit data and power.

The resulting benefits will make SPE the preferred network at the field level and beyond.

Advantages of Single Pair Ethernet:

- Consistent: Single Pair Ethernet enables uniform Ethernet-based communication from the sensor to the cloud
- Future-proof: key technology for Industry 4.0 and IIoT
- Flexible: ranges of up to 1000 m and transmission properties of up to 1 Gbps enable use across applications
- Innovative: lighter, less space required, and reduced installation effort

### General ordering data

Version	Built-in plugs, M8 PCB insert, Solder connection, IP67 with housing, THT/THR solder connection, 90°, Number of poles: 2, Tape
Order No.	<a href="#">2795100000</a>
Type	IE-PCB-SPM-P-90-THR
GTIN (EAN)	4064675119159
Qty.	100 items
Packaging	Tape
Delivery status	This article will no longer be available in the future.
Last order date	2026-06-30T00:00:00+02:00

## IE-PCB-SPM-P-90-THR

Weidmüller Interface GmbH & Co. KG  
Klingenbergstraße 26  
D-32758 Detmold  
Germany

www.weidmueller.com

## Technical data

## Approvals

ROHS	Conform
------	---------

## Dimensions and weights

Depth	31.6 mm	Depth (inches)	1.2441 inch
Height	14.5 mm	Height (inches)	0.5709 inch
Width	15.2 mm	Width (inches)	0.5984 inch
Net weight	8.14 g		

## Temperatures

Storage temperature	Operating temperature	-40 °C...85 °C
Installation temperature		

## Environmental Product Compliance

RoHS Compliance Status	Compliant without exemption
REACH SVHC	No SVHC above 0.1 wt%

## System specifications

Number of poles	2	Mounting onto the PCB	THT/THR solder connection
Shielding	Yes	Side termination, characteristic	Clip-on flange
Transmission rate	10/100/1000 MBit/s	Type of connection	Solder connection
Category	T1-B	Product family	Industrial Ethernet
Protection degree	IP67 with housing	Plugging cycles	≥ 100
Outgoing elbow	90°	Performance-Category	T1-B 10/100/1000 MBit/s
Soldering process	Reflow soldering, Manual soldering, Wave soldering	Solder pin dimensions	Octagonal

## Electrical properties

Dielectric strength, contact / shield	2250 V DC	Dielectric strength, contact / contact	1000 V DC
Insulation resistance	≥ 500 MΩ	Nominal voltage	72 V
Rated current	4 A		

## Standards

Connector standard	IEC 63171-5
--------------------	-------------

## Material data

Insulating material	LCP	Colour	silver, black
Colour chart (similar)	RAL 7001, RAL 9011	Insulation resistance	≥ 500 MΩ
Moisture Level (MSL)	1	UL 94 flammability rating	V-0
Contact material	Copper alloy	Contact surface	Ni/Au
Operating temperature, min.	-40 °C	Operating temperature, max.	85 °C

## Packing

Packaging	Tape	VPE length	392.00 mm
VPE width	350.00 mm	VPE height	75.00 mm

## IE-PCB-SPM-P-90-THR

**Weidmüller Interface GmbH & Co. KG**  
Klingenbergstraße 26  
D-32758 Detmold  
Germany

[www.weidmueller.com](http://www.weidmueller.com)

## Technical data

### Important note

Notes

### Classifications

ETIM 8.0	EC002637	ETIM 9.0	EC002637
ETIM 10.0	EC002637	ECLASS 14.0	27-46-02-01
ECLASS 15.0	27-46-02-01		

