

**DURA ECO LA-BAT 24V 7AH**

**Weidmüller Interface GmbH & Co. KG**  
Klingenbergstraße 26  
D-32758 Detmold  
Germany

[www.weidmueller.com](http://www.weidmueller.com)



The 5 battery modules with capacities from 1,2 Ah to 17Ah can supply up to 40 A for 30 minutes or 1 A for 30 hours and are fully compatible with the DC UPS control units CP DC UPS 24V 20A/10A & CP DC UPS 24V 40A. And for sure, the DURAEco series is a flexible & ease of use solution in a cost-effective design.

**General ordering data**

Version	Battery
Order No.	<a href="#">2789910000</a>
Type	DURA ECO LA-BAT 24V 7AH
GTIN (EAN)	4064675068662
Qty.	1 items

## DURA ECO LA-BAT 24V 7AH

Weidmüller Interface GmbH & Co. KG  
Klingenbergstraße 26  
D-32758 Detmold  
Germany

www.weidmueller.com

## Technical data

## Approvals

Approvals



UL File Number Search [UL Website](#)  
Certificate no. (cULus) E258476

## Dimensions and weights

Depth	135 mm	Depth (inches)	5.3149 inch
Height	158 mm	Height (inches)	6.2205 inch
Width	162 mm	Width (inches)	6.3779 inch
Net weight	6120 g		

## Temperatures

Storage temperature	-15 °C...50 °C	Operating temperature	
Humidity	5...95 % RH		

## Environmental Product Compliance

RoHS Compliance Status	Not affected
REACH SVHC	Lead 7439-92-1
SCIP	30bf869c-8adc-4ed2-ad02-c1fec963e943

## Operating interfaces and control inputs

Temperature probe	NTC 100 kΩ
-------------------	------------

## Input

Rated input voltage	24 V DC	Nominal capacity	7 Ah
Charging current, max.	1.08 A		

## Output

Parallel connection option	Yes	
Output current, max.	50 A	
Temperature probe	NTC 100 kΩ	
Buffer time depending on current	Current	35 A
	Buffer time	3 min
	Current	27 A
	Buffer time	5 min
	Current	8.5 A
	Buffer time	30 min
Overload and short circuit protection	2x25 A fuse	

## General data

Ambient temperature	-15 °C...+50 °C	Humidity	5...95 % RH
Protection degree	IP20	Life expectancy	5.65 a

Creation date 04.05.2026 02:47:36 MEZ

Catalogue status / Drawings

## DURA ECO LA-BAT 24V 7AH

**Weidmüller Interface GmbH & Co. KG**  
 Klingenbergstraße 26  
 D-32758 Detmold  
 Germany

www.weidmueller.com

### Technical data

Vibration DIN rail/wall in accordance with IEC 68-2-6	- / 0.7 g	Shock wall acc. to IEC 68227	30 g
---	-----------	------------------------------	------

#### Insulation coordination

Protection class	III, with no ground connection, for SELV
------------------	--

#### Connection data (input)

Number of terminals	2 (+,-)	Conductor cross-section, AWG/kcmil , max.	6 AWG
Conductor cross-section, AWG/kcmil , min.	24 AWG	Wire connection cross section, flexible (input), max.	10 mm <sup>2</sup>
Conductor cross-section, flexible , min.	0.5 mm <sup>2</sup>	Conductor cross-section, rigid , max.	16 mm <sup>2</sup>
Conductor cross-section, rigid , min.	0.5 mm <sup>2</sup>	Tightening torque, min.	1.2 Nm
Tightening torque, max.	2.4 Nm		

#### Connection data (signal)

Wire connection cross-section, flexible (signal), max.	1.5 mm <sup>2</sup>	Wire connection method	Pluggable screw connection
Wire cross-section, AWG/kcmil , max.	16	Wire cross-section, solid , min.	0.2 mm <sup>2</sup>
Wire cross-section, solid , max.	1.5 mm <sup>2</sup>	Wire connection cross-section, flexible (signal), min.	0.2 mm <sup>2</sup>
Number of terminals	2	Wire cross-section, AWG/kcmil , min.	24 mm <sup>2</sup>

#### Classifications

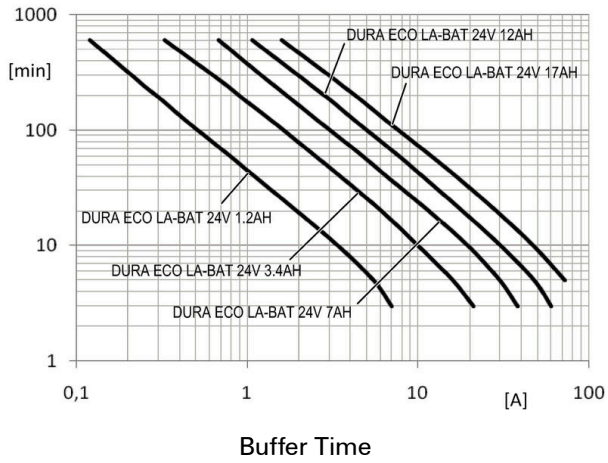
ETIM 8.0	EC002850	ETIM 9.0	EC002850
ETIM 10.0	EC002850	ECLASS 14.0	27-04-06-92
ECLASS 15.0	27-04-06-92		

**DURA ECO LA-BAT 24V 7AH**

**Weidmüller Interface GmbH & Co. KG**  
Klingenbergstraße 26  
D-32758 Detmold  
Germany

**Drawings**

[www.weidmueller.com](http://www.weidmueller.com)



## DURA ECO LA-BAT 24V 7AH

**Weidmüller Interface GmbH & Co. KG**  
 Klingenbergstraße 26  
 D-32758 Detmold  
 Germany

www.weidmueller.com

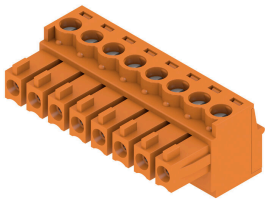
## Accessories

### Blade fuses

#### General ordering data

Type	CP A FUSE 25A	Version
Order No.	<a href="#">2582110000</a>	UPS control unit
GTIN (EAN)	4050118809756	
Qty.	1 ST	

### BCZ 3.81/180



Female socket connectors with clamping-yoke screw system for connecting wires.

Three wire-outlet directions are available and provide flexible connection-level design options:

- 180° wire parallel to plugging direction
- 90° wire perpendicular and above plugging direction
- 270° wire perpendicular and below plugging direction

There are three housing shapes, covering many different requirements, to choose from:

- Standard housing without flange
- Flange with screw (F)
- Flange featuring Weidmüller's patented release latch (LR) for lock-and-release latching with no strain and no tools needed.

Weidmüller's 3.81-mm-pitch (0.15 inch) plug-in connectors are compatible with the layouts of customary connectors and offer space for labelling and coding.

#### General ordering data

Type	BCZ 3.81/02/180 SN BK BX	Version
Order No.	<a href="#">1792770000</a>	PCB plug-in connector, female plug, 3.81 mm, Number of poles: 2,
GTIN (EAN)	4032248226757	180°, Clamping yoke connection, Clamping range, max. : 1.5 mm²,
Qty.	50 ST	Box