

DURA ECO LA-BAT 24V 1.2AH

Weidmüller Interface GmbH & Co. KG
Klingenbergstraße 26
D-32758 Detmold
Germany

www.weidmueller.com



The 5 battery modules with capacities from 1,2 Ah to 17Ah can supply up to 40 A for 30 minutes or 1 A for 30 hours and are fully compatible with the DC UPS control units CP DC UPS 24V 20A/10A & CP DC UPS 24V 40A. And for sure, the DURAEco series is a flexible & ease of use solution in a cost-effective design.

General ordering data

Version	Battery
Order No.	2789890000
Type	DURA ECO LA-BAT 24V 1.2AH
GTIN (EAN)	4064675068648
Qty.	1 items

DURA ECO LA-BAT 24V 1.2AH

Weidmüller Interface GmbH & Co. KG
 Klingenbergstraße 26
 D-32758 Detmold
 Germany

www.weidmueller.com

Technical data

Approvals

Approvals



UL File Number Search [UL Website](#)
 Certificate no. (cULus) E258476

Dimensions and weights

Depth	124 mm	Depth (inches)	4.8819 inch
Height	149.5 mm	Height (inches)	5.8858 inch
Width	52 mm	Width (inches)	2.0472 inch
Net weight	1750 g		

Temperatures

Storage temperature	-15 °C...50 °C	Operating temperature	
Humidity	5...95 % RH		

Environmental Product Compliance

RoHS Compliance Status	Not affected
REACH SVHC	Lead 7439-92-1
SCIP	30bf869c-8adc-4ed2-ad02-c1fec963e943

Operating interfaces and control inputs

Temperature probe	NTC 100 kΩ
-------------------	------------

Input

Rated input voltage	24 V DC	Nominal capacity	1.3 Ah
Charging current, max.	0.2 A		

Output

Parallel connection option	Yes	
Output current, max.	15 A	
Temperature probe	NTC 100 kΩ	
Buffer time depending on current	Current	6 A
	Buffer time	3 min
	Current	4.5 A
	Buffer time	5 min
	Current	1.4 A
	Buffer time	30 min
Overload and short circuit protection	10 A fuse	

General data

Ambient temperature	-15 °C...+50 °C	Humidity	5...95 % RH
Protection degree	IP20	Life expectancy	5.65 a

DURA ECO LA-BAT 24V 1.2AH

Weidmüller Interface GmbH & Co. KG
 Klingenbergstraße 26
 D-32758 Detmold
 Germany

www.weidmueller.com

Technical data

Vibration DIN rail/wall in accordance with IEC 68-2-6	0.7 / 0.7 g	Clip-in foot	metal
Shock wall acc. to IEC 68227	30 g		

Insulation coordination

Protection class	III, with no ground connection, for SELV
------------------	--

Connection data (input)

Number of terminals	2 (+,-)	Conductor cross-section, AWG/kcmil , max.	12 AWG
Conductor cross-section, AWG/kcmil , min.	24 AWG	Wire connection cross section, flexible (input), max.	4 mm ²
Conductor cross-section, flexible , min.	0.2 mm ²	Conductor cross-section, rigid , max.	4 mm ²
Conductor cross-section, rigid , min.	0.2 mm ²	Tightening torque, min.	0.5 Nm
Tightening torque, max.	0.5 Nm		

Connection data (signal)

Wire connection cross-section, flexible (signal), max.	4 mm ²	Wire connection method	Pluggable screw connection
Wire cross-section, AWG/kcmil , max.	12	Wire cross-section, solid , min.	0.2 mm ²
Wire cross-section, solid , max.	4 mm ²	Wire connection cross-section, flexible (signal), min.	0.2 mm ²
Number of terminals	2	Wire cross-section, AWG/kcmil , min.	24 mm ²

Classifications

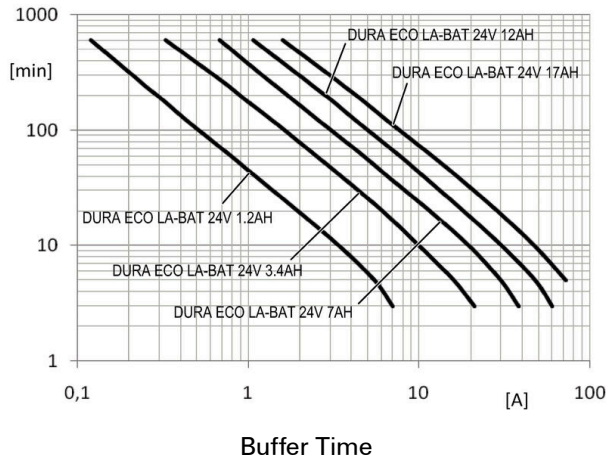
ETIM 8.0	EC002850	ETIM 9.0	EC002850
ETIM 10.0	EC002850	ECLASS 14.0	27-04-06-92
ECLASS 15.0	27-04-06-92		

DURA ECO LA-BAT 24V 1.2AH

Weidmüller Interface GmbH & Co. KG
Klingenbergstraße 26
D-32758 Detmold
Germany

Drawings

www.weidmueller.com



DURA ECO LA-BAT 24V 1.2AH

Weidmüller Interface GmbH & Co. KG
 Klingenbergstraße 26
 D-32758 Detmold
 Germany

www.weidmueller.com

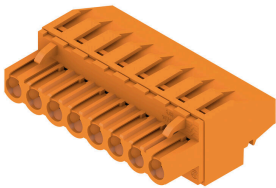
Accessories

Blade fuses

General ordering data

Type	CP A FUSE 15A	Version	
Order No.	2582100000	UPS control unit	
GTIN (EAN)	4050118699708		
Qty.	1 ST		

BLZP 5.08HC/270 SN



Female plugs with clamping-yoke connection for connecting wires with a right-angle (90° or 270°) outlet direction. The female connectors provide space for labelling and can be coded. Fastened by means of a flange or release latch. They also provide an integrated plus/minus screw, protection against faulty insertion of the wire, and they are delivered with open clamping yokes. HC = High Current.

General ordering data

Type	BLZP 5.08HC/04/270 SN B...	Version	
Order No.	1949040000	PCB plug-in connector, female plug, 5.08 mm, Number of poles: 4,	
GTIN (EAN)	4032248626496	270°, Clamping yoke connection, Clamping range, max. : 4 mm², Box	
Qty.	90 ST		