

CABTITE EP 24/14 GY

Weidmüller Interface GmbH & Co. KG

Klingenbergstraße 26

D-32758 Detmold

Germany

www.weidmueller.com



Cabtite - Cable Entry Plates

Insert cables and wires without plugs into control cabinets, enclosures or machines in the smallest of spaces, easily and in a space-saving manner.

With the Cabtite cable entry plates, you can do this even in harsh environments, whether protective hoses, pneumatic/hydraulic hoses or fiber optic cables - you can install your cables quickly, easily and in a space-saving manner. The installation is done through only one rectangular wall cut-out and is therefore up to 40% faster in the installation time (compared to standard cable glands).

The IP66 screw version of cable entry plates are tested according to DIN EN 60529 and made of UL94 V-0 certified TPE material with hard plastic core, suitable for the temperature range from -40°C to +90°C.

Cabtite cable entry plates are an economical alternative to conventional cable glands.

General ordering data

| | |
|------------|--|
| Version | Cable entry plate, Cabtite (cable entry system), TPE, grey, Height: 58 mm, Width: 149.6 mm, Depth: 29.2 mm, -40 °C...90 °C, IP66 |
| Order No. | 2779320000 |
| Type | CABTITE EP 24/14 GY |
| GTIN (EAN) | 4064675048794 |
| Qty. | 10 items |

CABTITE EP 24/14 GY

Weidmüller Interface GmbH & Co. KG
 Klingenbergstraße 26
 D-32758 Detmold
 Germany

www.weidmueller.com

Technical data

Approvals

Approvals



| | |
|-------------------------|----------------------------|
| ROHS | Conform |
| UL File Number Search | UL Website |
| Certificate No. (cURus) | E223801 |

Dimensions and weights

| | | | |
|------------|----------|-----------------|-------------|
| Depth | 29.2 mm | Depth (inches) | 1.1496 inch |
| Height | 58 mm | Height (inches) | 2.2835 inch |
| Width | 149.6 mm | Width (inches) | 5.8898 inch |
| Net weight | 106.9 g | | |

Temperatures

| | |
|-----------------------|----------------|
| Operating temperature | -40 °C...90 °C |
|-----------------------|----------------|

Environmental Product Compliance

| | |
|------------------------|-----------------------------|
| RoHS Compliance Status | Compliant without exemption |
| REACH SVHC | No SVHC above 0.1 wt% |

General information

| | | | |
|---------------------------|--------|-----------------------|--------------------------|
| Tightening torque | 3.5 Nm | Silicone | No |
| UL 94 flammability rating | V-0 | Protection degree | IP66 |
| Basic material | TPE | Protection class (UL) | Type 1, Type 12, Type 4X |

Number of connectable cables

| | | | |
|------------------------------|----------------------|-------------|--|
| Type of mounting | 4 screws | | |
| Number of connectable cables | 14 | | |
| Cable entries | Number | 5 | |
| | Cable diameter, min. | 3.2 mm | |
| | Cable diameter, max. | 6.3 mm | |
| | Cable type | Round cable | |
| | Number | 2 | |
| | Cable diameter, min. | 4 mm | |
| | Cable diameter, max. | 7.5 mm | |
| | Cable type | Round cable | |
| | Number | 3 | |
| | Cable diameter, min. | 5.5 mm | |
| | Cable diameter, max. | 10.5 mm | |
| | Cable type | Round cable | |
| | Number | 1 | |
| | Cable diameter, min. | 8 mm | |
| | Cable diameter, max. | 12.5 mm | |
| | Cable type | Round cable | |
| | Number | 3 | |
| | Cable diameter, min. | 12 mm | |
| | Cable diameter, max. | 16.2 mm | |
| | Cable type | Round cable | |

CABTITE EP 24/14 GY

Weidmüller Interface GmbH & Co. KG
Klingenbergstraße 26
D-32758 Detmold
Germany

www.weidmueller.com

Technical data

Classifications

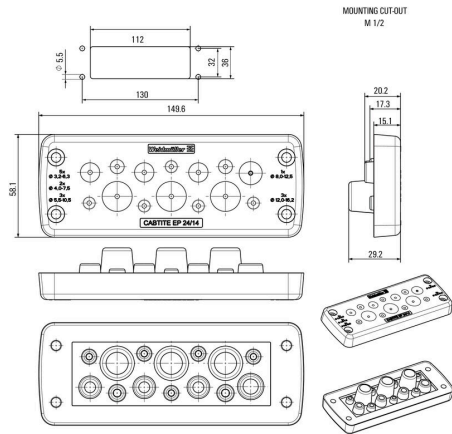
| | | | |
|-------------|-------------|-------------|-------------|
| ETIM 8.0 | EC002624 | ETIM 9.0 | EC002624 |
| ETIM 10.0 | EC002624 | ECLASS 14.0 | 27-18-28-15 |
| ECLASS 15.0 | 27-18-28-15 | | |

CABTITE EP 24/14 GY

Weidmüller Interface GmbH & Co. KG
Klingenbergstraße 26
D-32758 Detmold
Germany

Drawings

www.weidmueller.com



CABTITE EP 24/14 GY

Weidmüller Interface GmbH & Co. KG
 Klingenbergstraße 26
 D-32758 Detmold
 Germany

www.weidmueller.com

Accessories

Fixing material



The Cabtite cable entry system offers maximum flexibility in the cable management of control cabinets, enclosures and machines, while at the same time saving time, as well as providing secure sealing and strain relief for pre-terminated and non-terminated cables.

Cabtite's modular design of frame, grid inlays and sealing elements enables rapid configuration of cut-outs for pre-terminated cables - without the use of tools and with a reliable sealing of IP66 according to DIN EN 60529. Frame. Inlay. Sealing element. Three basic components in the modular system guarantee highest flexibility, variability and diversity of variants.

General ordering data

| | | | |
|------------|----------------------------|--|--|
| Type | CABTITE SC M5X25 SET | Version | |
| Order No. | 2635120000 | Mounting screw, Cabtite (cable entry system), Stainless steel, rust- | |
| GTIN (EAN) | 4050118662160 | proof, silver, Height: 30 mm, Width: 8.5 mm, Depth: 8.5 mm | |
| Qty. | 1 ST | | |

Rectangular splitting stamp for heavy-duty connectors



Weidmüller punching tools should be your first choice for making cut-outs in your electrical cabinets!

- PG cable glands
- M cable glands
- Special cable glands

Not suitable for stainless steel!

General ordering data

| | | | |
|------------|----------------------------|-------------|--|
| Type | KOK-112X36 | Version | |
| Order No. | 9204870000 | Sheet holes | |
| GTIN (EAN) | 4032248693801 | | |
| Qty. | 1 ST | | |