

## HDC MHX 2 FP

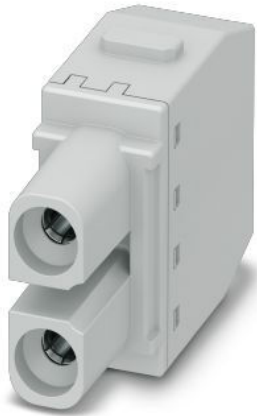
**Weidmüller Interface GmbH & Co. KG**

Klingenbergstraße 26

D-32758 Detmold

Germany

[www.weidmueller.com](http://www.weidmueller.com)



### Flexible

The four module sizes make for individual plug solutions that save a huge amount of space. The smaller pitch translates into an optimised design too.

### General ordering data

Version	Power module, 690 V, 40 A, Number of poles: 2, PUSH IN with actuator, Female, Required plug-in slots: 1
Order No.	<a href="#">2772830000</a>
Type	HDC MHX 2 FP
GTIN (EAN)	4064675036265
Qty.	1 items

## HDC MHX 2 FP

Weidmüller Interface GmbH &amp; Co. KG

Klingenbergstraße 26

D-32758 Detmold

Germany

www.weidmueller.com

## Technical data

## Approvals

Approvals



ROHS Conform

UL File Number Search [UL Website](#)

Certificate No. (cURus) E310075

## Dimensions and weights

Depth	34 mm	Depth (inches)	1.3386 inch
Height	40.75 mm	Height (inches)	1.6043 inch
Width	14.5 mm	Width (inches)	0.5709 inch
Net weight	21.12 g		

## Temperatures

Limit temperature -40 °C ... 125 °C

## Environmental Product Compliance

RoHS Compliance Status Compliant without exemption

REACH SVHC No SVHC above 0.1 wt%

## General data

Number of poles	2	UL 94 flammability rating	V-0
Insulation resistance	1012 Ω	Plugging cycles	≥ 500
Type	Female	Surge voltage category	III
Pollution severity	3	Basic material	Polycarbonate
Series	ModuPlug	Rated voltage (DIN EN 61984)	690 V
Rated impulse voltage (DIN EN 61984)	8 kV	Rated current (DIN EN 61984)	40 A
Required plug-in slots	1		

## PE connection data

Connection type PE Screw connection via module frame

## Version

Stripping length, rated connection	8 mm	Type of connection	PUSH IN with actuator
Conductor cross-section, max.	10 mm <sup>2</sup>	Conductor cross-section, min.	1.5 mm <sup>2</sup>

## Classifications

ETIM 8.0	EC000438	ETIM 9.0	EC000438
ETIM 10.0	EC000438	ECLASS 14.0	27-44-02-17
ECLASS 15.0	27-44-02-17		

Drawings

