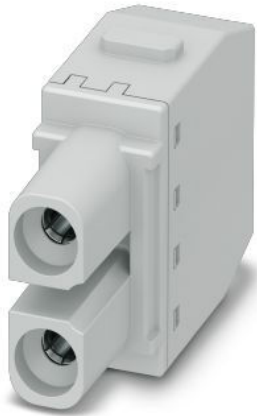


HDC MHX 2 FP

Weidmüller Interface GmbH & Co. KG
Klingenbergstraße 26
D-32758 Detmold
Germany

www.weidmueller.com



Flexible

The four module sizes make for individual plug solutions that save a huge amount of space. The smaller pitch translates into an optimised design too.

General ordering data

Version	Power module, 690 V, 40 A, Number of poles: 2, PUSH IN with actuator, Female, Required plug-in slots: 1
Order No.	2772830000
Type	HDC MHX 2 FP
GTIN (EAN)	4064675036265
Qty.	1 items

HDC MHX 2 FP

Weidmüller Interface GmbH & Co. KG

Klingenbergstraße 26

D-32758 Detmold

Germany

www.weidmueller.com

Technical data

Approvals

Approvals



ROHS Conform

UL File Number Search [UL Website](#)

Certificate No. (cURus) E310075

Dimensions and weights

Depth	34 mm	Depth (inches)	1.3386 inch
Height	40.75 mm	Height (inches)	1.6043 inch
Width	14.5 mm	Width (inches)	0.5709 inch
Net weight	21.12 g		

Temperatures

Limit temperature -40 °C ... 125 °C

Environmental Product Compliance

RoHS Compliance Status Compliant without exemption

REACH SVHC No SVHC above 0.1 wt%

General data

Number of poles	2	UL 94 flammability rating	V-0
Insulation resistance	1012 Ω	Plugging cycles	≥ 500
Type	Female	Surge voltage category	III
Pollution severity	3	Basic material	Polycarbonate
Series	ModuPlug	Rated voltage (DIN EN 61984)	690 V
Rated impulse voltage (DIN EN 61984)	8 kV	Rated current (DIN EN 61984)	40 A
Required plug-in slots	1		

PE connection data

Connection type PE Screw connection via module frame

Version

Stripping length, rated connection	8 mm	Type of connection	PUSH IN with actuator
Conductor cross-section, max.	10 mm ²	Conductor cross-section, min.	1.5 mm ²

Classifications

ETIM 8.0	EC000438	ETIM 9.0	EC000438
ETIM 10.0	EC000438	ECLASS 14.0	27-44-02-17
ECLASS 15.0	27-44-02-17		

Drawings

