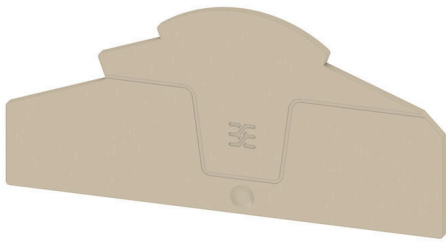


**AEP TTB 6 PG****Weidmüller Interface GmbH & Co. KG**

Klingenbergstraße 26

D-32758 Detmold

Germany

[www.weidmueller.com](http://www.weidmueller.com)

The comprehensive accessories of the Klippon® Connect TTB-Range are perfectly matched down to the last detail. This facilitates mounting while adhering to required norms. All function- and safety-relevant components are captively connected to the terminal block. This increases the reliability of the current and voltage transformer circuits during installation and maintenance work.

**General ordering data**

Version	A-series, End plate
Order No.	<a href="#">2762310000</a>
Type	AEP TTB 6 PG
GTIN (EAN)	4064675075899
Qty.	20 items

**Technical data**

**Approvals**

ROHS	Conform
------	---------

**Dimensions and weights**

Depth	50.8 mm	Depth (inches)	2 inch
Height	109 mm	Height (inches)	4.2913 inch
Width	2.1 mm	Width (inches)	0.0827 inch
Net weight	4.7 g		

**Temperatures**

Ambient temperature	-60 °C...85 °C	Continuous operating temp., min.	-60 °C
Continuous operating temp., max.	130 °C		

**Environmental Product Compliance**

RoHS Compliance Status	Compliant without exemption
REACH SVHC	No SVHC above 0.1 wt%

**Material data**

Basic material	Wemid	Colour	dark beige
UL 94 flammability rating	V-0		

**Additional technical data**

Snap-on	Yes
---------	-----

**Classifications**

ETIM 8.0	EC000886	ETIM 9.0	EC000886
ETIM 10.0	EC000886	ECLASS 14.0	27-25-03-01
ECLASS 15.0	27-25-03-01		