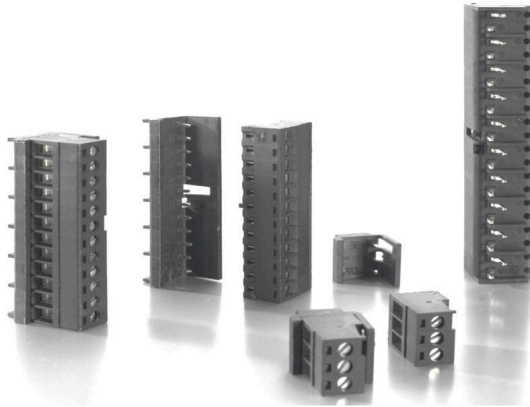


SET BSCZ/SSC 4.00/12/90/3.2 SN BK SO

Weidmüller Interface GmbH & Co. KG
Klingenbergstraße 26
D-32758 Detmold
Germany

www.weidmueller.com



General ordering data

Order No.	2761060000
Type	SET BSCZ/SSC 4.00/12/90/3.2 SN BK SO
GTIN (EAN)	4064675022855
Qty.	40 items
Packaging	Box

SET BSCZ/SSC 4.00/12/90/3.2 SN BK SO

Weidmüller Interface GmbH & Co. KG
Klingenbergstraße 26
D-32758 Detmold
Germany

www.weidmueller.com

Technical data

Approvals

Approvals



ROHS Conform

UL File Number Search [UL Website](#)

Certificate No. (cURus) E60693

Dimensions and weights

Depth	15.7 mm	Depth (inches)	0.6181 inch
Height	25.2 mm	Height (inches)	0.9921 inch
Width	49.03 mm	Width (inches)	1.9303 inch
Net weight	22.91 g		

Environmental Product Compliance

RoHS Compliance Status	Compliant with exemption
RoHS Exemption (if applicable/known)	6c
REACH SVHC	Lead 7439-92-1
SCIP	18d33292-e933-40ac-8dbe-4904ce2c4ae7

Material data

Insulating material	PA	Colour	black
Colour chart (similar)	RAL 9011	Moisture Level (MSL)	
UL 94 flammability rating	V-0	Contact material	Cu-alloy
Contact surface	tinned	Operating temperature, min.	-50 °C
Operating temperature, max.	120 °C		

Rated data acc. to IEC

Rated current, max. number of poles (Tu=20°C)	13.5 A	Rated current, min. number of poles (Tu=40°C)	16.5 A
Rated voltage for surge voltage class / pollution degree II/2	600 V	Rated voltage for surge voltage class / pollution degree III/2	300 V
Rated impulse voltage for surge voltage class/ pollution degree II/2	4000 V	Rated impulse voltage for surge voltage class/ pollution degree III/2	4000 V

Rated data acc. to UL 1059

Institute (cURus)	CURUS	Certificate No. (cURus)	E60693
Reference to approval values	Specifications are maximum values, details - see approval certificate.		

Packing

Packaging	Box	VPE length	502.00 mm
VPE width	389.00 mm	VPE height	220.00 mm

Important note

Notes

SET BSCZ/SSC 4.00/12/90/3.2 SN BK SO

Weidmüller Interface GmbH & Co. KG
Klingenbergstraße 26
D-32758 Detmold
Germany

www.weidmueller.com

Technical data

Classifications

ETIM 8.0	EC002643	ETIM 9.0	EC002643
ETIM 10.0	EC002643	ECLASS 14.0	27-46-01-01
ECLASS 15.0	27-46-01-01		