

KCMA 5-250-5A-1.5VA-1

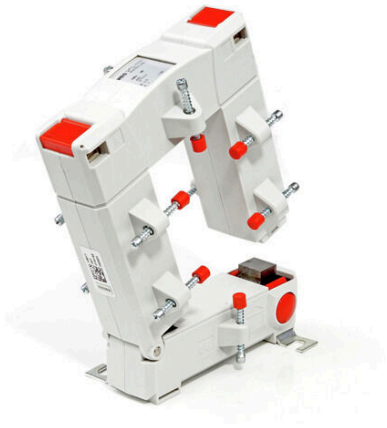
Weidmüller Interface GmbH & Co. KG

Klingenbergstraße 26

D-32758 Detmold

Germany

www.weidmueller.com



Current transformers for retrofitting

Features:

- especially suitable for use in hard-to-reach places
- no cutting of the primary conductors necessary
- Unfolding of the current transformer without additional tools

General ordering data

Version	Primary current: 250 A, Secondary current max.: 5 A, Load: 1.5 VA, Tolerance class: 1, Split-core current transformer
Order No.	2753360000
Type	KCMA 5-250-5A-1.5VA-1
GTIN (EAN)	4050118896589
Qty.	1 items
Manufacturer	MBS AG

KCMA 5-250-5A-1.5VA-1

Weidmüller Interface GmbH & Co. KG
 Klingenbergstraße 26
 D-32758 Detmold
 Germany

www.weidmueller.com

Technical data

Approvals

ROHS Conform

Dimensions and weights

Depth	58 mm	Depth (inches)	2.2835 inch
Height	158 mm	Height (inches)	6.2205 inch
Width	125 mm	Width (inches)	4.9212 inch
Net weight	556 g		

Temperatures

Storage temperature Operating temperature -5 °C...40 °C

Environmental Product Compliance

RoHS Compliance Status Compliant without exemption
 REACH SVHC No SVHC above 0.1 wt%

Dimensions of live conductors

Type of conductor	Insulated conductor only	Round conductor	55.00 mm
Rail	50 x 80 mm	Installation location	Indoor use

Electrical attributes

Tolerance class	1	Secondary current	0...5 A
Load	1.5 VA	Primary current	250 A

Technical properties

Protection degree IP20 Nominal frequency 50 Hz

Insulation coordination

Standard IEC 61869-2: 2012 Tolerance class 1

Classifications

ETIM 8.0	EC002048	ETIM 9.0	EC002048
ETIM 10.0	EC002048	ECLASS 14.0	27-21-09-02
ECLASS 15.0	27-21-09-02		

KCMA 5-250-5A-1.5VA-1

Weidmüller Interface GmbH & Co. KG
Klingenbergstraße 26
D-32758 Detmold
Germany

Drawings

www.weidmueller.com

