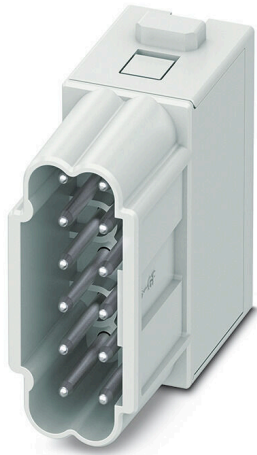


HDC MHD 12 MP

Weidmüller Interface GmbH & Co. KG
Klingenbergstraße 26
D-32758 Detmold
Germany

www.weidmueller.com

**Flexible**

The four module sizes make for individual plug solutions that save a huge amount of space. The smaller pitch translates into an optimised design too.

General ordering data

Version	Signal module, 250 V, 10 A, Number of poles: 12, PUSH IN with actuator, Male, Required plug-in slots: 1
Order No.	2748460000
Type	HDC MHD 12 MP
GTIN (EAN)	4050118890938
Qty.	1 items

HDC MHD 12 MP

Weidmüller Interface GmbH & Co. KG
Klingenbergstraße 26
D-32758 Detmold
Germany

www.weidmueller.com

Technical data

Approvals

Approvals



ROHS	Conform
UL File Number Search	UL Website
Certificate No. (UR)	E92202
Certificate No. (cURus)	E310075

Dimensions and weights

Depth	34 mm	Depth (inches)	1.3386 inch
Height	36.3 mm	Height (inches)	1.4291 inch
Width	34.1 mm	Width (inches)	1.3425 inch
Net weight	21 g		

Temperatures

Limit temperature -40 °C ... 125 °C

Environmental Product Compliance

RoHS Compliance Status	Compliant without exemption
REACH SVHC	No SVHC above 0.1 wt%

General data

Number of poles	12	UL 94 flammability rating	V-0
Plugging cycles	≥ 500	Type	Male
Surge voltage category	III	Pollution severity	3
Basic material	Polycarbonate	Series	ModuPlug
Rated voltage (DIN EN 61984)	250 V	Rated voltage according to UL/CSA	600 V
Rated impulse voltage (DIN EN 61984)	4 kV	Rated current (DIN EN 61984)	10 A
Required plug-in slots	1		

PE connection data

Connection type PE Screw connection via module frame

Version

Wire connection cross section AWG, max.	AWG 16	Stripping length, rated connection	8 mm
Type of connection	PUSH IN with actuator	Wire connection cross section AWG, min.	AWG 26
Conductor cross-section, max.	1.5 mm ²	Conductor cross-section, min.	0.14 mm ²

Classifications

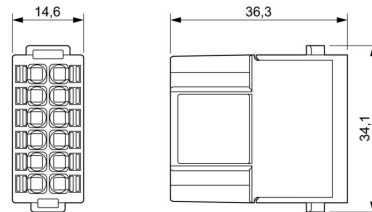
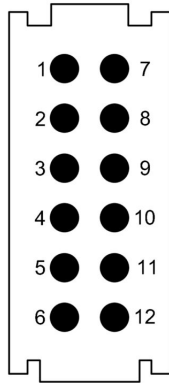
ETIM 8.0	EC000438	ETIM 9.0	EC000438
ETIM 10.0	EC000438	ECLASS 14.0	27-44-02-17
ECLASS 15.0	27-44-02-17		

HDC MHD 12 MP

Weidmüller Interface GmbH & Co. KG
 Klingenbergstraße 26
 D-32758 Detmold
 Germany

Drawings

www.weidmueller.com



HDC MHD 12 MP

Weidmüller Interface GmbH & Co. KG
 Klingenbergstraße 26
 D-32758 Detmold
 Germany

Accessories

www.weidmueller.com

Standard



General ordering data

Type	HDC MF 6B AB	Version
Order No.	1428920000	Frame
GTIN (EAN)	4050118233414	
Qty.	1 ST	
Type	HDC MF 6B BA	Version
Order No.	1428940000	Frame
GTIN (EAN)	4050118233353	
Qty.	1 ST	
Type	HDC MF 10B AC	Version
Order No.	1428960000	Frame
GTIN (EAN)	4050118233223	
Qty.	1 ST	
Type	HDC MF 10B CA	Version
Order No.	1428980000	Frame
GTIN (EAN)	4050118233278	
Qty.	1 ST	
Type	HDC MF 16B AD	Version
Order No.	1429010000	Frame
GTIN (EAN)	4050118233315	
Qty.	1 ST	
Type	HDC MF 16B DA	Version
Order No.	1429030000	Frame
GTIN (EAN)	4050118233407	
Qty.	1 ST	
Type	HDC MF 24B AF	Version
Order No.	1429050000	Frame
GTIN (EAN)	4050118233285	
Qty.	1 ST	
Type	HDC MF 24B FA	Version
Order No.	1429070000	Frame
GTIN (EAN)	4050118233520	
Qty.	1 ST	

HDC MHD 12 MP

Weidmüller Interface GmbH & Co. KG
 Klingenbergstraße 26
 D-32758 Detmold
 Germany

Accessories

www.weidmueller.com

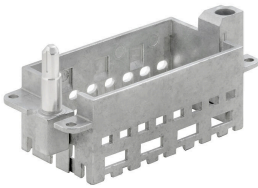
With long guiding pin



General ordering data

Type	HDC MFGL 10B AC	Version	
Order No.	2736990000	Frame	
GTIN (EAN)	4050118823042		
Qty.	1 ST		
Type	HDC MFGL 6B AB	Version	
Order No.	2736970000	Frame	
GTIN (EAN)	4050118823035		
Qty.	1 ST		
Type	HDC MFGL 24B FA	Version	
Order No.	2737040000	Frame	
GTIN (EAN)	4050118823097		
Qty.	1 ST		

With short guiding pin



General ordering data

Type	HDC MFGS 16B DA	Version	
Order No.	2736940000	Frame	
GTIN (EAN)	4050118823004		
Qty.	1 ST		
Type	HDC MFGS 24B AF	Version	
Order No.	2736950000	Frame	
GTIN (EAN)	4050118823011		
Qty.	1 ST		

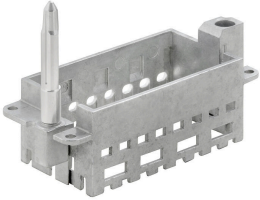
HDC MHD 12 MP

Weidmüller Interface GmbH & Co. KG
 Klingenbergstraße 26
 D-32758 Detmold
 Germany

www.weidmueller.com

Accessories

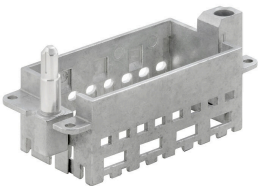
With long guiding pin



General ordering data

Type	HDC MFGL 16B DA	Version	
Order No.	2737020000	Frame	
GTIN (EAN)	4050118823073		
Qty.	1 ST		

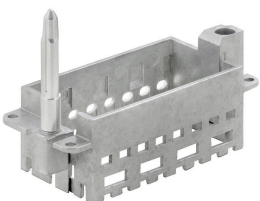
With short guiding pin



General ordering data

Type	HDC MFGL 16B AD	Version	
Order No.	2736930000	Frame	
GTIN (EAN)	4050118822298		
Qty.	1 ST		

With long guiding pin



General ordering data

Type	HDC MFGL 16B AD	Version	
Order No.	2737010000	Frame	
GTIN (EAN)	4050118823066		
Qty.	1 ST		

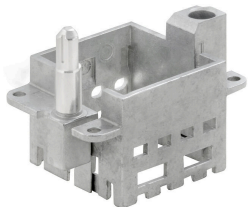
HDC MHD 12 MP

Weidmüller Interface GmbH & Co. KG
 Klingenbergstraße 26
 D-32758 Detmold
 Germany

Accessories

www.weidmueller.com

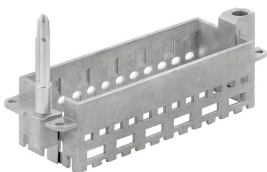
With short guiding pin



General ordering data

Type	HDC MFGS 6B AB	Version	
Order No.	2736890000	Frame	
GTIN (EAN)	4050118822250		
Qty.	1 ST		
Type	HDC MFGS 24B FA	Version	
Order No.	2736960000	Frame	
GTIN (EAN)	4050118823028		
Qty.	1 ST		
Type	HDC MFGS 10B AC	Version	
Order No.	2736910000	Frame	
GTIN (EAN)	4050118822274		
Qty.	1 ST		

With long guiding pin



General ordering data

Type	HDC MFGL 24B AF	Version	
Order No.	2737030000	Frame	
GTIN (EAN)	4050118823080		
Qty.	1 ST		
Type	HDC MFGL 10B CA	Version	
Order No.	2737000000	Frame	
GTIN (EAN)	4050118823059		
Qty.	1 ST		

HDC MHD 12 MP

Weidmüller Interface GmbH & Co. KG
 Klingenbergstraße 26
 D-32758 Detmold
 Germany

www.weidmueller.com

Accessories

With short guiding pin

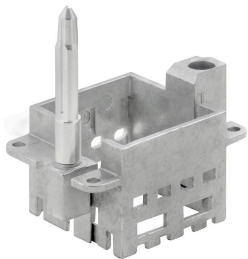


General ordering data

Type	HDC MFGS 6B BA	Version	
Order No.	2736900000	Frame	
GTIN (EAN)	4050118822267		
Qty.	1 ST		

Type	HDC MFGS 10B CA	Version	
Order No.	2736920000	Frame	
GTIN (EAN)	4050118822281		
Qty.	1 ST		

With long guiding pin



General ordering data

Type	HDC MFGL 6B BA	Version	
Order No.	2736980000	Frame	
GTIN (EAN)	4050118822908		
Qty.	1 ST		

HDC MHD 12 MP

Weidmüller Interface GmbH & Co. KG
 Klingenbergstraße 26
 D-32758 Detmold
 Germany

www.weidmueller.com

Counterpart

Electrical modules



Flexible
 The four module sizes make for individual plug solutions that save a huge amount of space. The smaller pitch translates into an optimised design too.

General ordering data

Type	HDC MHD 12 FC	Version
Order No.	1428850000	Signal module, 250 V, 10 A, Number of poles: 12, Crimp connection, Female, Required plug-in slots: 1
GTIN (EAN)	4050118233087	
Qty.	1 ST	
Type	HDC MHD 12 FP	Version
Order No.	2748470000	Signal module, 250 V, 10 A, Number of poles: 12, PUSH IN with actuator, Female, Required plug-in slots: 1
GTIN (EAN)	4050118890921	
Qty.	1 ST	