

## HDC MHE 8 FP

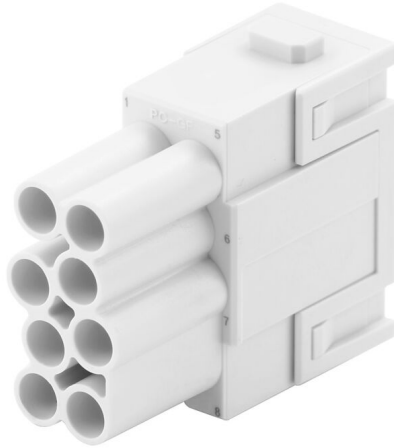
**Weidmüller Interface GmbH & Co. KG**

Klingenbergstraße 26

D-32758 Detmold

Germany

[www.weidmueller.com](http://www.weidmueller.com)



### Flexible

The four module sizes make for individual plug solutions that save a huge amount of space. The smaller pitch translates into an optimised design too.

### General ordering data

Version	Signal module, 400 V, 16 A, Number of poles: 8, PUSH IN with actuator, Female, Required plug-in slots: 1
Order No.	<a href="#">2748450000</a>
Type	HDC MHE 8 FP
GTIN (EAN)	4050118890945
Qty.	1 items

## HDC MHE 8 FP

Weidmüller Interface GmbH &amp; Co. KG

Klingenbergstraße 26

D-32758 Detmold

Germany

www.weidmueller.com

## Technical data

## Approvals

Approvals



ROHS Conform

UL File Number Search [UL Website](#)

Certificate No. (cURus) E310075

## Dimensions and weights

Depth	34 mm	Depth (inches)	1.3386 inch
Height	39 mm	Height (inches)	1.5354 inch
Width	34.1 mm	Width (inches)	1.3425 inch
Net weight	18.5 g		

## Temperatures

Limit temperature -40 °C ... 125 °C

## Environmental Product Compliance

RoHS Compliance Status Compliant without exemption

REACH SVHC No SVHC above 0.1 wt%

## General data

Number of poles	8	UL 94 flammability rating	V-0
Plugging cycles	≥ 500	Type	Female
Surge voltage category	III	Pollution severity	3
Basic material	Polycarbonate	Series	ModuPlug
Rated voltage (DIN EN 61984)	400 V	Rated impulse voltage (DIN EN 61984)	6 kV
Rated current (DIN EN 61984)	16 A	Required plug-in slots	1

## PE connection data

Connection type PE Screw connection via module frame

## Version

Wire connection cross section AWG, max.	AWG 14	Stripping length, rated connection	10 mm
Type of connection	PUSH IN with actuator	Wire connection cross section AWG, min.	AWG 20
Conductor cross-section, max.	2.5 mm <sup>2</sup>	Conductor cross-section, min.	0.5 mm <sup>2</sup>

## Classifications

ETIM 8.0	EC000438	ETIM 9.0	EC000438
ETIM 10.0	EC000438	ECLASS 14.0	27-44-02-17
ECLASS 15.0	27-44-02-17		

