

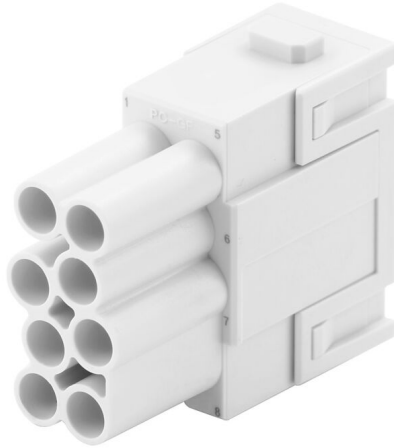
**HDC MHE 8 FP****Weidmüller Interface GmbH & Co. KG**

Klingenbergstraße 26

D-32758 Detmold

Germany

www.weidmueller.com

**Flexible**

The four module sizes make for individual plug solutions that save a huge amount of space. The smaller pitch translates into an optimised design too.

**General ordering data**

Version	Signal module, 400 V, 16 A, Number of poles: 8, PUSH IN with actuator, Female, Required plug-in slots: 1
Order No.	<a href="#">2748450000</a>
Type	HDC MHE 8 FP
GTIN (EAN)	4050118890945
Qty.	1 items

## HDC MHE 8 FP

Weidmüller Interface GmbH &amp; Co. KG

Klingenbergstraße 26

D-32758 Detmold

Germany

www.weidmueller.com

## Technical data

## Approvals

Approvals



ROHS Conform

UL File Number Search [UL Website](#)

Certificate No. (cURus) E310075

## Dimensions and weights

Depth	34 mm	Depth (inches)	1.3386 inch
Height	39 mm	Height (inches)	1.5354 inch
Width	34.1 mm	Width (inches)	1.3425 inch
Net weight	18.5 g		

## Temperatures

Limit temperature -40 °C ... 125 °C

## Environmental Product Compliance

RoHS Compliance Status Compliant without exemption

REACH SVHC No SVHC above 0.1 wt%

## General data

Number of poles	8	UL 94 flammability rating	V-0
Plugging cycles	≥ 500	Type	Female
Surge voltage category	III	Pollution severity	3
Basic material	Polycarbonate	Series	ModuPlug
Rated voltage (DIN EN 61984)	400 V	Rated impulse voltage (DIN EN 61984)	6 kV
Rated current (DIN EN 61984)	16 A	Required plug-in slots	1

## PE connection data

Connection type PE Screw connection via module frame

## Version

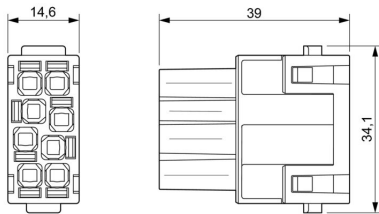
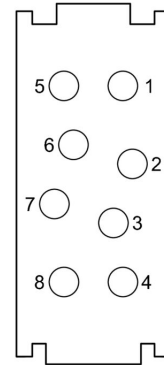
Wire connection cross section AWG, max.	AWG 14	Stripping length, rated connection	10 mm
Type of connection	PUSH IN with actuator	Wire connection cross section AWG, min.	AWG 20
Conductor cross-section, max.	2.5 mm <sup>2</sup>	Conductor cross-section, min.	0.5 mm <sup>2</sup>

## Classifications

ETIM 8.0	EC000438	ETIM 9.0	EC000438
ETIM 10.0	EC000438	ECLASS 14.0	27-44-02-17
ECLASS 15.0	27-44-02-17		

HDC MHE 8 FP

Drawings



## HDC MHE 8 FP

**Weidmüller Interface GmbH & Co. KG**  
 Klingenbergstraße 26  
 D-32758 Detmold  
 Germany

## Accessories

www.weidmueller.com

### Standard



### General ordering data

Type	HDC MF 6B AB	Version
Order No.	<a href="#">1428920000</a>	Frame
GTIN (EAN)	4050118233414	
Qty.	1 ST	
Type	HDC MF 6B BA	Version
Order No.	<a href="#">1428940000</a>	Frame
GTIN (EAN)	4050118233353	
Qty.	1 ST	
Type	HDC MF 10B AC	Version
Order No.	<a href="#">1428960000</a>	Frame
GTIN (EAN)	4050118233223	
Qty.	1 ST	
Type	HDC MF 10B CA	Version
Order No.	<a href="#">1428980000</a>	Frame
GTIN (EAN)	4050118233278	
Qty.	1 ST	
Type	HDC MF 16B AD	Version
Order No.	<a href="#">1429010000</a>	Frame
GTIN (EAN)	4050118233315	
Qty.	1 ST	
Type	HDC MF 16B DA	Version
Order No.	<a href="#">1429030000</a>	Frame
GTIN (EAN)	4050118233407	
Qty.	1 ST	
Type	HDC MF 24B AF	Version
Order No.	<a href="#">1429050000</a>	Frame
GTIN (EAN)	4050118233285	
Qty.	1 ST	
Type	HDC MF 24B FA	Version
Order No.	<a href="#">1429070000</a>	Frame
GTIN (EAN)	4050118233520	
Qty.	1 ST	

## HDC MHE 8 FP

**Weidmüller Interface GmbH & Co. KG**  
 Klingenbergstraße 26  
 D-32758 Detmold  
 Germany

## Accessories

www.weidmueller.com

### With long guiding pin



#### General ordering data

Type	HDC MFGL 10B AC	Version	
Order No.	<a href="#">2736990000</a>	Frame	
GTIN (EAN)	4050118823042		
Qty.	1 ST		
Type	HDC MFGL 6B AB	Version	
Order No.	<a href="#">2736970000</a>	Frame	
GTIN (EAN)	4050118823035		
Qty.	1 ST		
Type	HDC MFGL 24B FA	Version	
Order No.	<a href="#">2737040000</a>	Frame	
GTIN (EAN)	4050118823097		
Qty.	1 ST		

### With short guiding pin



#### General ordering data

Type	HDC MFGS 16B DA	Version	
Order No.	<a href="#">2736940000</a>	Frame	
GTIN (EAN)	4050118823004		
Qty.	1 ST		
Type	HDC MFGS 24B AF	Version	
Order No.	<a href="#">2736950000</a>	Frame	
GTIN (EAN)	4050118823011		
Qty.	1 ST		

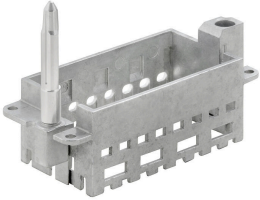
## HDC MHE 8 FP

**Weidmüller Interface GmbH & Co. KG**  
Klingenbergstraße 26  
D-32758 Detmold  
Germany

[www.weidmueller.com](http://www.weidmueller.com)

## Accessories

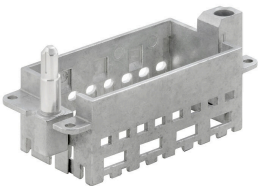
### With long guiding pin



#### General ordering data

Type	HDC MFGL 16B DA	Version	
Order No.	<a href="#">2737020000</a>	Frame	
GTIN (EAN)	4050118823073		
Qty.	1 ST		

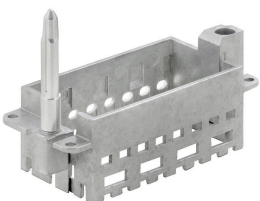
### With short guiding pin



#### General ordering data

Type	HDC MFGL 16B DA	Version	
Order No.	<a href="#">2736930000</a>	Frame	
GTIN (EAN)	4050118822298		
Qty.	1 ST		

### With long guiding pin



#### General ordering data

Type	HDC MFGL 16B AD	Version	
Order No.	<a href="#">2737010000</a>	Frame	
GTIN (EAN)	4050118823066		
Qty.	1 ST		

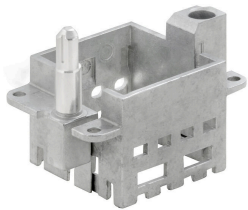
## HDC MHE 8 FP

**Weidmüller Interface GmbH & Co. KG**  
 Klingenbergstraße 26  
 D-32758 Detmold  
 Germany

## Accessories

www.weidmueller.com

### With short guiding pin



#### General ordering data

Type	HDC MFGS 6B AB	Version	
Order No.	<a href="#">2736890000</a>	Frame	
GTIN (EAN)	4050118822250		
Qty.	1 ST		
Type	HDC MFGS 24B FA	Version	
Order No.	<a href="#">2736960000</a>	Frame	
GTIN (EAN)	4050118823028		
Qty.	1 ST		
Type	HDC MFGS 10B AC	Version	
Order No.	<a href="#">2736910000</a>	Frame	
GTIN (EAN)	4050118822274		
Qty.	1 ST		

### With long guiding pin



#### General ordering data

Type	HDC MFGL 24B AF	Version	
Order No.	<a href="#">2737030000</a>	Frame	
GTIN (EAN)	4050118823080		
Qty.	1 ST		
Type	HDC MFGL 10B CA	Version	
Order No.	<a href="#">2737000000</a>	Frame	
GTIN (EAN)	4050118823059		
Qty.	1 ST		

**HDC MHE 8 FP**

**Weidmüller Interface GmbH & Co. KG**  
 Klingenbergstraße 26  
 D-32758 Detmold  
 Germany

www.weidmueller.com

**Accessories**

**With short guiding pin**

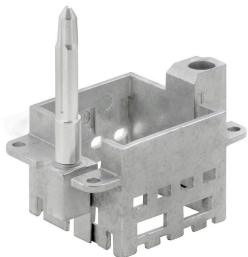


**General ordering data**

Type	HDC MFGS 6B BA	Version	
Order No.	<a href="#">2736900000</a>	Frame	
GTIN (EAN)	4050118822267		
Qty.	1 ST		

Type	HDC MFGS 10B CA	Version	
Order No.	<a href="#">2736920000</a>	Frame	
GTIN (EAN)	4050118822281		
Qty.	1 ST		

**With long guiding pin**



**General ordering data**

Type	HDC MFGL 6B BA	Version	
Order No.	<a href="#">2736980000</a>	Frame	
GTIN (EAN)	4050118822908		
Qty.	1 ST		

## HDC MHE 8 FP

**Weidmüller Interface GmbH & Co. KG**  
 Klingenbergstraße 26  
 D-32758 Detmold  
 Germany

www.weidmueller.com

## Counterpart

### Electrical modules



#### Flexible

The four module sizes make for individual plug solutions that save a huge amount of space. The smaller pitch translates into an optimised design too.

### General ordering data

Type	HDC MHE 8 MC	Version
Order No.	<a href="#">1428880000</a>	Signal module, 400 V, 16 A, Number of poles: 8, Crimp connection,
GTIN (EAN)	4050118233247	Male, Required plug-in slots: 1
Qty.	1 ST	
Type	HDC MHE 8 MP	Version
Order No.	<a href="#">2748440000</a>	Signal module, 400 V, 16 A, Number of poles: 8, PUSH IN with
GTIN (EAN)	4050118890952	actuator, Male, Required plug-in slots: 1
Qty.	1 ST	