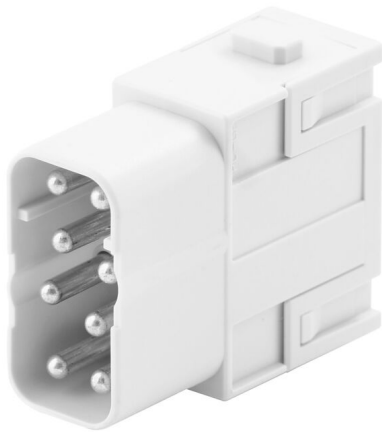


**HDC MHE 8 MP**

**Weidmüller Interface GmbH & Co. KG**  
Klingenbergstraße 26  
D-32758 Detmold  
Germany

www.weidmueller.com

**Flexible**

The four module sizes make for individual plug solutions that save a huge amount of space. The smaller pitch translates into an optimised design too.

**General ordering data**

Version	Signal module, 400 V, 16 A, Number of poles: 8, PUSH IN with actuator, Male, Required plug-in slots: 1
Order No.	<a href="#">2748440000</a>
Type	HDC MHE 8 MP
GTIN (EAN)	4050118890952
Qty.	1 items

## HDC MHE 8 MP

Weidmüller Interface GmbH &amp; Co. KG

Klingenbergstraße 26

D-32758 Detmold

Germany

www.weidmueller.com

## Technical data

## Approvals

Approvals



ROHS Conform

UL File Number Search [UL Website](#)

Certificate No. (cURus) E310075

## Dimensions and weights

Depth	34 mm	Depth (inches)	1.3386 inch
Height	39 mm	Height (inches)	1.5354 inch
Width	34.1 mm	Width (inches)	1.3425 inch
Net weight	18.3 g		

## Temperatures

Limit temperature -40 °C ... 125 °C

## Environmental Product Compliance

RoHS Compliance Status Compliant without exemption

REACH SVHC No SVHC above 0.1 wt%

## General data

Number of poles	8	UL 94 flammability rating	V-0
Plugging cycles	≥ 500	Type	Male
Surge voltage category	III	Pollution severity	3
Basic material	Polycarbonate	Series	ModuPlug
Rated voltage (DIN EN 61984)	400 V	Rated impulse voltage (DIN EN 61984)	6 kV
Rated current (DIN EN 61984)	16 A	Required plug-in slots	1

## PE connection data

Connection type PE Screw connection via module frame

## Version

Stripping length, rated connection	10 mm	Type of connection	PUSH IN with actuator
Conductor cross-section, max.	2.5 mm <sup>2</sup>	Conductor cross-section, min.	0.5 mm <sup>2</sup>

## Classifications

ETIM 8.0	EC000438	ETIM 9.0	EC000438
ETIM 10.0	EC000438	ECLASS 14.0	27-44-02-17
ECLASS 15.0	27-44-02-17		

HDC MHE 8 MP

Drawings

