

**HDC MHE 5L MP**

**Weidmüller Interface GmbH & Co. KG**  
Klingenbergstraße 26  
D-32758 Detmold  
Germany

www.weidmueller.com

**Product image****Flexible**

The four module sizes make for individual plug solutions that save a huge amount of space. The smaller pitch translates into an optimised design too.

**General ordering data**

|            |  |
|------------|--|
| Version    | Signal module, 230 V, 16 A, Number of poles: 5, PUSH IN with actuator, Male, Required plug-in slots: 1 |
| Order No.  | <a href="#">2748400000</a>   |
| Type       | HDC MHE 5L MP  |
| GTIN (EAN) | 4050118890877  |
| Qty.       | 1 items  |

## HDC MHE 5L MP

Weidmüller Interface GmbH & Co. KG  
Klingenbergstraße 26  
D-32758 Detmold  
Germany

www.weidmueller.com

## Technical data

## Approvals

Approvals



|                         |                            |
|-------------------------|----------------------------|
| ROHS                    | Conform                    |
| UL File Number Search   | <a href="#">UL Website</a> |
| Certificate No. (UR)    | E92202                     |
| Certificate No. (cURus) | E310075                    |

## Dimensions and weights

|            |       |                 |             |
|------------|-------|-----------------|-------------|
| Depth      | 34 mm | Depth (inches)  | 1.3386 inch |
| Height     | 36 mm | Height (inches) | 1.4173 inch |
| Width      | 34 mm | Width (inches)  | 1.3386 inch |
| Net weight | 18 g  |                 |             |

## Temperatures

Limit temperature -40 °C ... 125 °C

## Environmental Product Compliance

|                        |                             |
|------------------------|-----------------------------|
| RoHS Compliance Status | Compliant without exemption |
| REACH SVHC             | No SVHC above 0.1 wt%       |

## General data

|                                      |               |                                   |          |
|--------------------------------------|---------------|-----------------------------------|----------|
| Number of poles                      | 5             | UL 94 flammability rating         | V-0      |
| Plugging cycles                      | ≥ 500         | Type                              | Male     |
| Surge voltage category               | III           | Pollution severity                | 3        |
| Basic material                       | Polycarbonate | Series                            | ModuPlug |
| Rated voltage (DIN EN 61984)         | 230 V         | Rated voltage according to UL/CSA | 600 V    |
| Rated impulse voltage (DIN EN 61984) | 4 kV          | Rated current (DIN EN 61984)      | 16 A     |
| Required plug-in slots               | 1             |                                   |          |

## PE connection data

Connection type PE Screw connection via module frame

## Version

|   |                       |   |                      |
|---|-----------------------|---|----------------------|
| Wire connection cross section AWG, max. | AWG 16                | Stripping length, rated connection      | 8 mm                 |
| Type of connection                      | PUSH IN with actuator | Wire connection cross section AWG, min. | AWG 24               |
| Conductor cross-section, max.           | 1.5 mm <sup>2</sup>   | Conductor cross-section, min.           | 0.25 mm <sup>2</sup> |

## Classifications

|             |             |             |             |
|-------------|-------------|-------------|-------------|
| ETIM 8.0    | EC000438    | ETIM 9.0    | EC000438    |
| ETIM 10.0   | EC000438    | ECLASS 14.0 | 27-44-02-17 |
| ECLASS 15.0 | 27-44-02-17 |             |             |

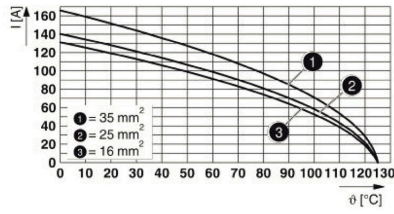
## HDC MHE 5L MP

**Weidmüller Interface GmbH & Co. KG**  
Klingenbergstraße 26  
D-32758 Detmold  
Germany

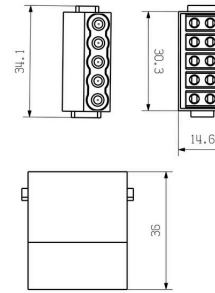
# Drawings

[www.weidmueller.com](http://www.weidmueller.com)

### Derating curve



### Drawing



## HDC MHE 5L MP

**Weidmüller Interface GmbH & Co. KG**  
 Klingenbergstraße 26  
 D-32758 Detmold  
 Germany

## Accessories

www.weidmueller.com

## Standard



## Simple

The innovative sliding frame has two defined lock-in positions for opening and closing. This enables simple and tool-free module assembly.

## General ordering data

|            |                            |         |
|------------|----------------------------|---------|
| Type       | HDC MF 6B AB               | Version |
| Order No.  | <a href="#">1428920000</a> | Frame   |
| GTIN (EAN) | 4050118233414              |         |
| Qty.       | 1 ST                       |         |
| Type       | HDC MF 6B BA               | Version |
| Order No.  | <a href="#">1428940000</a> | Frame   |
| GTIN (EAN) | 4050118233353              |         |
| Qty.       | 1 ST                       |         |
| Type       | HDC MF 10B AC              | Version |
| Order No.  | <a href="#">1428960000</a> | Frame   |
| GTIN (EAN) | 4050118233223              |         |
| Qty.       | 1 ST                       |         |
| Type       | HDC MF 10B CA              | Version |
| Order No.  | <a href="#">1428980000</a> | Frame   |
| GTIN (EAN) | 4050118233278              |         |
| Qty.       | 1 ST                       |         |
| Type       | HDC MF 16B AD              | Version |
| Order No.  | <a href="#">1429010000</a> | Frame   |
| GTIN (EAN) | 4050118233315              |         |
| Qty.       | 1 ST                       |         |
| Type       | HDC MF 16B DA              | Version |
| Order No.  | <a href="#">1429030000</a> | Frame   |
| GTIN (EAN) | 4050118233407              |         |
| Qty.       | 1 ST                       |         |
| Type       | HDC MF 24B AF              | Version |
| Order No.  | <a href="#">1429050000</a> | Frame   |
| GTIN (EAN) | 4050118233285              |         |
| Qty.       | 1 ST                       |         |
| Type       | HDC MF 24B FA              | Version |
| Order No.  | <a href="#">1429070000</a> | Frame   |
| GTIN (EAN) | 4050118233520              |         |
| Qty.       | 1 ST                       |         |

## HDC MHE 5L MP

**Weidmüller Interface GmbH & Co. KG**  
 Klingenbergstraße 26  
 D-32758 Detmold  
 Germany

[www.weidmueller.com](http://www.weidmueller.com)

## Accessories

## With long guiding pin



## Simple

The innovative sliding frame has two defined lock-in positions for opening and closing. This enables simple and tool-free module assembly.

## General ordering data

|            |                            |         |
|------------|----------------------------|---------|
| Type       | HDC MFGL 10B AC            | Version |
| Order No.  | <a href="#">2736990000</a> | Frame   |
| GTIN (EAN) | 4050118823042              |         |
| Qty.       | 1 ST                       |         |
| Type       | HDC MFGL 6B AB             | Version |
| Order No.  | <a href="#">2736970000</a> | Frame   |
| GTIN (EAN) | 4050118823035              |         |
| Qty.       | 1 ST                       |         |
| Type       | HDC MFGL 24B FA            | Version |
| Order No.  | <a href="#">2737040000</a> | Frame   |
| GTIN (EAN) | 4050118823097              |         |
| Qty.       | 1 ST                       |         |

## With short guiding pin



## Simple

The innovative sliding frame has two defined lock-in positions for opening and closing. This enables simple and tool-free module assembly.

## General ordering data

|            |                            |         |
|------------|----------------------------|---------|
| Type       | HDC MFGS 16B DA            | Version |
| Order No.  | <a href="#">2736940000</a> | Frame   |
| GTIN (EAN) | 4050118823004              |         |
| Qty.       | 1 ST                       |         |
| Type       | HDC MFGS 24B AF            | Version |
| Order No.  | <a href="#">2736950000</a> | Frame   |
| GTIN (EAN) | 4050118823011              |         |
| Qty.       | 1 ST                       |         |

**HDC MHE 5L MP**

**Weidmüller Interface GmbH & Co. KG**  
 Klingenbergstraße 26  
 D-32758 Detmold  
 Germany

www.weidmueller.com

**Accessories**

**With long guiding pin**



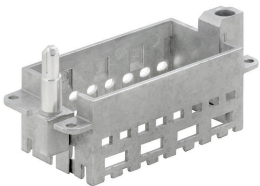
**Simple**

The innovative sliding frame has two defined lock-in positions for opening and closing. This enables simple and tool-free module assembly.

**General ordering data**

|            |                            |         |  |
|------------|----------------------------|---------|--|
| Type       | HDC MFGL 16B DA            | Version |  |
| Order No.  | <a href="#">2737020000</a> | Frame   |  |
| GTIN (EAN) | 4050118823073              |         |  |
| Qty.       | 1 ST                       |         |  |

**With short guiding pin**



**Simple**

The innovative sliding frame has two defined lock-in positions for opening and closing. This enables simple and tool-free module assembly.

**General ordering data**

|            |                            |         |  |
|------------|----------------------------|---------|--|
| Type       | HDC MFGL 16B AD            | Version |  |
| Order No.  | <a href="#">2736930000</a> | Frame   |  |
| GTIN (EAN) | 4050118822298              |         |  |
| Qty.       | 1 ST                       |         |  |

**With long guiding pin**



**Simple**

The innovative sliding frame has two defined lock-in positions for opening and closing. This enables simple and tool-free module assembly.

**General ordering data**

|            |                            |         |  |
|------------|----------------------------|---------|--|
| Type       | HDC MFGL 16B AD            | Version |  |
| Order No.  | <a href="#">2737010000</a> | Frame   |  |
| GTIN (EAN) | 4050118823066              |         |  |
| Qty.       | 1 ST                       |         |  |

## HDC MHE 5L MP

**Weidmüller Interface GmbH & Co. KG**  
 Klingenbergstraße 26  
 D-32758 Detmold  
 Germany

## Accessories

www.weidmueller.com

## With short guiding pin



## Simple

The innovative sliding frame has two defined lock-in positions for opening and closing. This enables simple and tool-free module assembly.

## General ordering data

|            |                            |         |
|------------|----------------------------|---------|
| Type       | HDC MFGS 6B AB             | Version |
| Order No.  | <a href="#">2736890000</a> | Frame   |
| GTIN (EAN) | 4050118822250              |         |
| Qty.       | 1 ST                       |         |
| Type       | HDC MFGS 24B FA            | Version |
| Order No.  | <a href="#">2736960000</a> | Frame   |
| GTIN (EAN) | 4050118823028              |         |
| Qty.       | 1 ST                       |         |
| Type       | HDC MFGS 10B AC            | Version |
| Order No.  | <a href="#">2736910000</a> | Frame   |
| GTIN (EAN) | 4050118822274              |         |
| Qty.       | 1 ST                       |         |

## With long guiding pin



## Simple

The innovative sliding frame has two defined lock-in positions for opening and closing. This enables simple and tool-free module assembly.

## General ordering data

|            |                            |         |
|------------|----------------------------|---------|
| Type       | HDC MFGL 24B AF            | Version |
| Order No.  | <a href="#">2737030000</a> | Frame   |
| GTIN (EAN) | 4050118823080              |         |
| Qty.       | 1 ST                       |         |
| Type       | HDC MFGL 10B CA            | Version |
| Order No.  | <a href="#">2737000000</a> | Frame   |
| GTIN (EAN) | 4050118823059              |         |
| Qty.       | 1 ST                       |         |

## HDC MHE 5L MP

**Weidmüller Interface GmbH & Co. KG**  
 Klingenbergstraße 26  
 D-32758 Detmold  
 Germany

[www.weidmueller.com](http://www.weidmueller.com)

## Accessories

## With short guiding pin



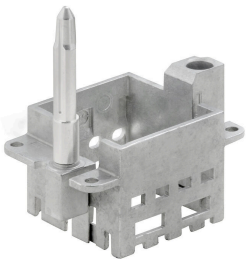
## Simple

The innovative sliding frame has two defined lock-in positions for opening and closing. This enables simple and tool-free module assembly.

## General ordering data

|            |                            |         |  |
|------------|----------------------------|---------|--|
| Type       | HDC MFGS 6B BA             | Version |  |
| Order No.  | <a href="#">2736900000</a> | Frame   |  |
| GTIN (EAN) | 4050118822267              |         |  |
| Qty.       | 1 ST                       |         |  |
| Type       | HDC MFGS 10B CA            | Version |  |
| Order No.  | <a href="#">2736920000</a> | Frame   |  |
| GTIN (EAN) | 4050118822281              |         |  |
| Qty.       | 1 ST                       |         |  |

## With long guiding pin



## Simple

The innovative sliding frame has two defined lock-in positions for opening and closing. This enables simple and tool-free module assembly.

## General ordering data

|            |                            |         |  |
|------------|----------------------------|---------|--|
| Type       | HDC MFGL 6B BA             | Version |  |
| Order No.  | <a href="#">2736980000</a> | Frame   |  |
| GTIN (EAN) | 4050118822908              |         |  |
| Qty.       | 1 ST                       |         |  |

## HDC MHE 5L MP

**Weidmüller Interface GmbH & Co. KG**  
Klingenbergstraße 26  
D-32758 Detmold  
Germany

[www.weidmueller.com](http://www.weidmueller.com)

## Counterpart

### Electrical modules



#### Flexible

The four module sizes make for individual plug solutions that save a huge amount of space. The smaller pitch translates into an optimised design too.

### General ordering data

|            |                            |  |  |
|------------|----------------------------|--|--|
| Type       | HDC MHE 5L FP              | Version  |  |
| Order No.  | <a href="#">2748410000</a> | Signal module, 230 V, 16 A, Number of poles: 5, PUSH IN with actuator, Female, Required plug-in slots: 1 |  |
| GTIN (EAN) | 4050118890792              |  |  |
| Qty.       | 1 ST                       |  |  |