

**HDC MHE 2 HV FC**

**Weidmüller Interface GmbH & Co. KG**  
Klingenbergstraße 26  
D-32758 Detmold  
Germany

www.weidmueller.com

**Flexible**

The four module sizes make for individual plug solutions that save a huge amount of space. The smaller pitch translates into an optimised design too.

**General ordering data**

Version	High voltage module, 2900 V, 16 A, Number of poles: 2, Crimp connection, Female, Required plug-in slots: 2
Order No.	<a href="#">2748390000</a>
Type	HDC MHE 2 HV FC
GTIN (EAN)	4050118891003
Qty.	1 items

## HDC MHE 2 HV FC

Weidmüller Interface GmbH & Co. KG  
Klingenbergstraße 26  
D-32758 Detmold  
Germany

www.weidmueller.com

## Technical data

## Approvals

Approvals



ROHS	Conform
UL File Number Search	<a href="#">UL Website</a>
Certificate No. (UR)	E92202
Certificate No. (cURus)	E310075

## Dimensions and weights

Depth	34 mm	Depth (inches)	1.3386 inch
Height	64.3 mm	Height (inches)	2.5315 inch
Width	34.1 mm	Width (inches)	1.3425 inch
Net weight	51.92 g		

## Temperatures

Limit temperature -40 °C ... 125 °C

## Environmental Product Compliance

RoHS Compliance Status	Compliant with exemption
RoHS Exemption (if applicable/known)	6c
REACH SVHC	Lead 7439-92-1
SCIP	fa505316-3e43-4ad0-930c-360dfdbe182a

## General data

Number of poles	2	UL 94 flammability rating	V-0
Plugging cycles	≥ 500	Type	Female
Surge voltage category	III	Pollution severity	3
Basic material	Polycarbonate	Series	ModuPlug
Rated voltage (DIN EN 61984)	2900 V	Rated voltage according to UL/CSA	600 V
Rated impulse voltage (DIN EN 61984)	15 kV	Rated current (DIN EN 61984)	16 A
Required plug-in slots	2		

## PE connection data

Connection type PE Screw connection via module frame

## Version

Wire connection cross section AWG, max.	AWG 12	Stripping length, rated connection	9.5 mm
Type of connection	Crimp connection	Wire connection cross section AWG, min.	AWG 20
Conductor cross-section, max.	4 mm <sup>2</sup>	Conductor cross-section, min.	0.5 mm <sup>2</sup>

## Classifications

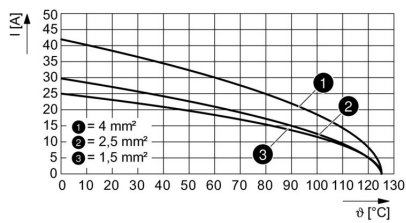
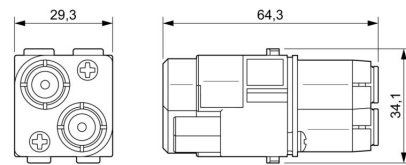
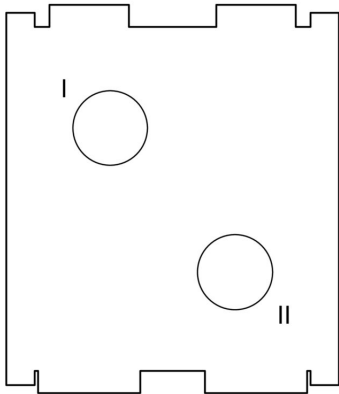
ETIM 8.0	EC000438	ETIM 9.0	EC000438
ETIM 10.0	EC000438	ECLASS 14.0	27-44-02-17
ECLASS 15.0	27-44-02-17		

HDC MHE 2 HV FC

Weidmüller Interface GmbH & Co. KG  
Klingenbergstraße 26  
D-32758 Detmold  
Germany

Drawings

www.weidmueller.com



## HDC MHE 2 HV FC

**Weidmüller Interface GmbH & Co. KG**  
 Klingenbergstraße 26  
 D-32758 Detmold  
 Germany

www.weidmueller.com

## Accessories

## Crimp contacts HE



Crimps provide a electrical and mechanical connection between wire and contact that is both secure and reliable. The optimal crimp connection is gas-tight and corrosion-resistant.

## General ordering data

Type	HDC-C-HE-BM0.5AG	Version
Order No.	<a href="#">1201100000</a>	Heavy-duty connectors, Crimp contact, HE, HEE, HQ, MixMate,
GTIN (EAN)	4008190142698	Female, Conductor cross-section, max.: 0.5, turned, Copper alloy
Qty.	100 ST	
Type	HDC-C-HE-BM0.5AU	Version
Order No.	<a href="#">1651470000</a>	Heavy-duty connectors, Crimp contact, HE, HEE, HQ, MixMate,
GTIN (EAN)	4008190400149	Female, Conductor cross-section, max.: 0.5, turned, Copper alloy
Qty.	100 ST	
Type	HDC-C-HE-BM0.75-1.00AG	Version
Order No.	<a href="#">1201200000</a>	Heavy-duty connectors, Crimp contact, HE, HEE, HQ, MixMate,
GTIN (EAN)	4008190044480	Female, Conductor cross-section, max.: 1, turned, Copper alloy
Qty.	100 ST	
Type	HDC-C-HE-BM0.75-1.00AU	Version
Order No.	<a href="#">1651480000</a>	Heavy-duty connectors, Crimp contact, HE, HEE, HQ, MixMate,
GTIN (EAN)	4008190400156	Female, Conductor cross-section, max.: 1, turned, Copper alloy
Qty.	100 ST	
Type	HDC-C-HE-BM1.5AG	Version
Order No.	<a href="#">1201300000</a>	Heavy-duty connectors, Crimp contact, HE, HEE, HQ, MixMate,
GTIN (EAN)	4008190100346	Female, Conductor cross-section, max.: 1.5, turned, Copper alloy
Qty.	100 ST	
Type	HDC-C-HE-BM1.5AU	Version
Order No.	<a href="#">1651490000</a>	Heavy-duty connectors, Crimp contact, HE, HEE, HQ, MixMate,
GTIN (EAN)	4008190400163	Female, Conductor cross-section, max.: 1.5, turned, Copper alloy
Qty.	100 ST	
Type	HDC-C-HE-BM2.5AG	Version
Order No.	<a href="#">1201400000</a>	Heavy-duty connectors, Crimp contact, HE, HEE, HQ, MixMate,
GTIN (EAN)	4008190047078	Female, Conductor cross-section, max.: 2.5, turned, Copper alloy
Qty.	100 ST	
Type	HDC-C-HE-BM2.5AU	Version
Order No.	<a href="#">1651500000</a>	Heavy-duty connectors, Crimp contact, HE, HEE, HQ, MixMate,
GTIN (EAN)	4008190400170	Female, Conductor cross-section, max.: 2.5, turned, Copper alloy
Qty.	100 ST	
Type	HDC-C-HE-BM4.0AG	Version
Order No.	<a href="#">1201500000</a>	Heavy-duty connectors, Crimp contact, HE, HEE, HQ, MixMate,
GTIN (EAN)	4008190148096	Female, Conductor cross-section, max.: 4, turned, Copper alloy
Qty.	100 ST	
Type	HDC-C-HE-BM4.0AU	Version
Order No.	<a href="#">1651510000</a>	Heavy-duty connectors, Crimp contact, HE, HEE, HQ, MixMate,
GTIN (EAN)	4008190400187	Female, Conductor cross-section, max.: 4, turned, Copper alloy
Qty.	100 ST	

## HDC MHE 2 HV FC

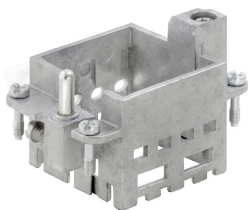
**Weidmüller Interface GmbH & Co. KG**  
 Klingenbergstraße 26  
 D-32758 Detmold  
 Germany

www.weidmueller.com

## Accessories

Type	HDC-C-HE-BM4.65AU	Version	
Order No.	<a href="#">1116530000</a>	Heavy-duty connectors, Crimp contact, HE, HEE, HQ, MixMate,	
GTIN (EAN)	4032248897254	Female, Conductor cross-section, max.: 4.65, turned, Copper alloy	
Qty.	100 ST		

## Standard



### General ordering data

Type	HDC MF 6B AB	Version	
Order No.	<a href="#">1428920000</a>	Frame	
GTIN (EAN)	4050118233414		
Qty.	1 ST		
Type	HDC MF 6B BA	Version	
Order No.	<a href="#">1428940000</a>	Frame	
GTIN (EAN)	4050118233353		
Qty.	1 ST		
Type	HDC MF 10B AC	Version	
Order No.	<a href="#">1428960000</a>	Frame	
GTIN (EAN)	4050118233223		
Qty.	1 ST		
Type	HDC MF 10B CA	Version	
Order No.	<a href="#">1428980000</a>	Frame	
GTIN (EAN)	4050118233278		
Qty.	1 ST		
Type	HDC MF 16B AD	Version	
Order No.	<a href="#">1429010000</a>	Frame	
GTIN (EAN)	4050118233315		
Qty.	1 ST		
Type	HDC MF 16B DA	Version	
Order No.	<a href="#">1429030000</a>	Frame	
GTIN (EAN)	4050118233407		
Qty.	1 ST		
Type	HDC MF 24B AF	Version	
Order No.	<a href="#">1429050000</a>	Frame	
GTIN (EAN)	4050118233285		
Qty.	1 ST		
Type	HDC MF 24B FA	Version	
Order No.	<a href="#">1429070000</a>	Frame	
GTIN (EAN)	4050118233520		
Qty.	1 ST		

## HDC MHE 2 HV FC

**Weidmüller Interface GmbH & Co. KG**  
Klingenbergstraße 26  
D-32758 Detmold  
Germany

[www.weidmueller.com](http://www.weidmueller.com)

## Counterpart

### Electrical modules



#### Flexible

The four module sizes make for individual plug solutions that save a huge amount of space. The smaller pitch translates into an optimised design too.

### General ordering data

Type	HDC MHE 2 HV MC	Version	
Order No.	<a href="#">2748380000</a>		
GTIN (EAN)	4050118890969		
Qty.	1 ST		
			High voltage module, 2900 V, 16 A, Number of poles: 2, Crimp connection, Male, Required plug-in slots: 2