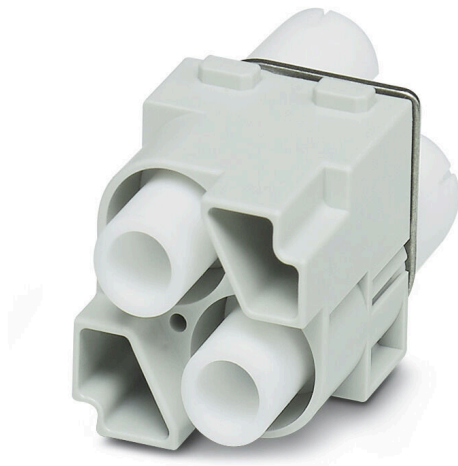


HDC MHE 2 HV MC

Weidmüller Interface GmbH & Co. KG
Klingenbergstraße 26
D-32758 Detmold
Germany

www.weidmueller.com

**Flexible**

The four module sizes make for individual plug solutions that save a huge amount of space. The smaller pitch translates into an optimised design too.

General ordering data

Version	High voltage module, 2900 V, 16 A, Number of poles: 2, Crimp connection, Male, Required plug-in slots: 2
Order No.	2748380000
Type	HDC MHE 2 HV MC
GTIN (EAN)	4050118890969
Qty.	1 items

HDC MHE 2 HV MC

Weidmüller Interface GmbH & Co. KG
Klingenbergstraße 26
D-32758 Detmold
Germany

www.weidmueller.com

Technical data

Approvals

Approvals



ROHS	Conform
UL File Number Search	UL Website
Certificate No. (UR)	E92202
Certificate No. (cURus)	E310075

Dimensions and weights

Depth	34 mm	Depth (inches)	1.3386 inch
Height	61.3 mm	Height (inches)	2.4134 inch
Width	34.1 mm	Width (inches)	1.3425 inch
Net weight	47.52 g		

Temperatures

Limit temperature -40 °C ... 125 °C

Environmental Product Compliance

RoHS Compliance Status	Compliant with exemption
RoHS Exemption (if applicable/known)	6c
REACH SVHC	Lead 7439-92-1
SCIP	fa505316-3e43-4ad0-930c-360dfdbe182a

General data

Number of poles	2	UL 94 flammability rating	V-0
Plugging cycles	≥ 500	Type	Male
Surge voltage category	III	Pollution severity	3
Basic material	Polycarbonate	Series	ModuPlug
Rated voltage (DIN EN 61984)	2900 V	Rated voltage according to UL/CSA	600 V
Rated impulse voltage (DIN EN 61984)	15 kV	Rated current (DIN EN 61984)	16 A
Required plug-in slots	2		

PE connection data

Connection type PE Screw connection via module frame

Version

Wire connection cross section AWG, max.	AWG 12	Stripping length, rated connection	9.5 mm
Type of connection	Crimp connection	Wire connection cross section AWG, min.	AWG 20
Conductor cross-section, max.	4 mm ²	Conductor cross-section, min.	0.5 mm ²

Classifications

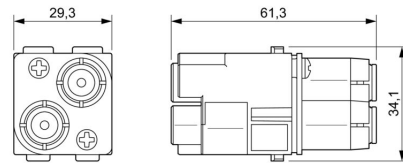
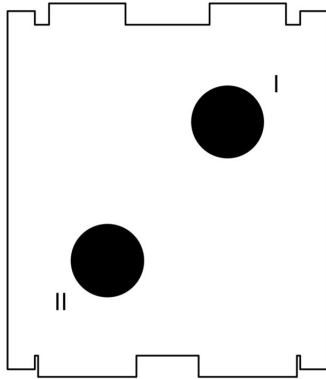
ETIM 8.0	EC000438	ETIM 9.0	EC000438
ETIM 10.0	EC000438	ECLASS 14.0	27-44-02-17
ECLASS 15.0	27-44-02-17		

HDC MHE 2 HV MC

Weidmüller Interface GmbH & Co. KG
Klingenbergstraße 26
D-32758 Detmold
Germany

Drawings

www.weidmueller.com



HDC MHE 2 HV MC

Weidmüller Interface GmbH & Co. KG
 Klingenbergstraße 26
 D-32758 Detmold
 Germany

www.weidmueller.com

Accessories

Crimp contacts HE



Crimps provide a electrical and mechanical connection between wire and contact that is both secure and reliable. The optimal crimp connection is gas-tight and corrosion-resistant.

General ordering data

Type	HDC-C-HE-SM0.5AG	Version
Order No.	1200500000	Heavy-duty connectors, Crimp contact, HE, HEE, HQ, MixMate, Male,
GTIN (EAN)	4008190159627	Conductor cross-section, max.: 0.5, turned, Copper alloy
Qty.	100 ST	
Type	HDC-C-HE-SM0.5AU	Version
Order No.	1651420000	Heavy-duty connectors, Crimp contact, HE, HEE, HQ, MixMate, Male,
GTIN (EAN)	4008190400095	Conductor cross-section, max.: 0.5, turned, Copper alloy
Qty.	100 ST	
Type	HDC-C-HE-SM0.75-1.00AG	Version
Order No.	1200600000	Heavy-duty connectors, Crimp contact, HE, HEE, HQ, MixMate, Male,
GTIN (EAN)	4008190171308	Conductor cross-section, max.: 1, turned, Copper alloy
Qty.	100 ST	
Type	HDC-C-HE-SM0.75-1.00AU	Version
Order No.	1651430000	Heavy-duty connectors, Crimp contact, HE, HEE, HQ, MixMate, Male,
GTIN (EAN)	4008190400101	Conductor cross-section, max.: 1, turned, Copper alloy
Qty.	100 ST	
Type	HDC-C-HE-SM1.5AG	Version
Order No.	1200700000	Heavy-duty connectors, Crimp contact, HE, HEE, HQ, MixMate, Male,
GTIN (EAN)	4008190074920	Conductor cross-section, max.: 1.5, turned, Copper alloy
Qty.	100 ST	
Type	HDC-C-HE-SM1.5AU	Version
Order No.	1651440000	Heavy-duty connectors, Crimp contact, HE, HEE, HQ, MixMate, Male,
GTIN (EAN)	4008190400118	Conductor cross-section, max.: 1.5, turned, Copper alloy
Qty.	100 ST	
Type	HDC-C-HE-SM2.5AG	Version
Order No.	1200800000	Heavy-duty connectors, Crimp contact, HE, HEE, HQ, MixMate, Male,
GTIN (EAN)	4008190131913	Conductor cross-section, max.: 2.5, turned, Copper alloy
Qty.	100 ST	
Type	HDC-C-HE-SM2.5AU	Version
Order No.	1651450000	Heavy-duty connectors, Crimp contact, HE, HEE, HQ, MixMate, Male,
GTIN (EAN)	4008190400125	Conductor cross-section, max.: 2.5, turned, Copper alloy
Qty.	100 ST	
Type	HDC-C-HE-SM4.0AG	Version
Order No.	1200900000	Heavy-duty connectors, Crimp contact, HE, HEE, HQ, MixMate, Male,
GTIN (EAN)	4008190115906	Conductor cross-section, max.: 4, turned, Copper alloy
Qty.	100 ST	
Type	HDC-C-HE-SM4.0AU	Version
Order No.	1651460000	Heavy-duty connectors, Crimp contact, HE, HEE, HQ, MixMate, Male,
GTIN (EAN)	4008190400132	Conductor cross-section, max.: 4, turned, Copper alloy
Qty.	100 ST	

HDC MHE 2 HV MC

Weidmüller Interface GmbH & Co. KG
 Klingenbergstraße 26
 D-32758 Detmold
 Germany

www.weidmueller.com

Accessories

Type	HDC-C-HE-SM4.65AU	Version	
Order No.	1116540000	Heavy-duty connectors, Crimp contact, HE, HEE, HQ, MixMate, Male,	
GTIN (EAN)	4032248897261	Conductor cross-section, max.: 4.65, turned, Copper alloy	
Qty.	100 ST		

Standard



General ordering data

Type	HDC MF 6B AB	Version	
Order No.	1428920000	Frame	
GTIN (EAN)	4050118233414		
Qty.	1 ST		
Type	HDC MF 6B BA	Version	
Order No.	1428940000	Frame	
GTIN (EAN)	4050118233353		
Qty.	1 ST		
Type	HDC MF 10B AC	Version	
Order No.	1428960000	Frame	
GTIN (EAN)	4050118233223		
Qty.	1 ST		
Type	HDC MF 10B CA	Version	
Order No.	1428980000	Frame	
GTIN (EAN)	4050118233278		
Qty.	1 ST		
Type	HDC MF 16B AD	Version	
Order No.	1429010000	Frame	
GTIN (EAN)	4050118233315		
Qty.	1 ST		
Type	HDC MF 16B DA	Version	
Order No.	1429030000	Frame	
GTIN (EAN)	4050118233407		
Qty.	1 ST		
Type	HDC MF 24B AF	Version	
Order No.	1429050000	Frame	
GTIN (EAN)	4050118233285		
Qty.	1 ST		
Type	HDC MF 24B FA	Version	
Order No.	1429070000	Frame	
GTIN (EAN)	4050118233520		
Qty.	1 ST		

HDC MHE 2 HV MC

Weidmüller Interface GmbH & Co. KG
Klingenbergstraße 26
D-32758 Detmold
Germany

www.weidmueller.com

Counterpart

Electrical modules



Flexible

The four module sizes make for individual plug solutions that save a huge amount of space. The smaller pitch translates into an optimised design too.

General ordering data

Type	HDC MHE 2 HV FC	Version	
Order No.	2748390000		
GTIN (EAN)	4050118891003		
Qty.	1 ST		
			High voltage module, 2900 V, 16 A, Number of poles: 2, Crimp connection, Female, Required plug-in slots: 2