

HDC MHX 3/4 MC

Weidmüller Interface GmbH & Co. KG
Klingenbergstraße 26
D-32758 Detmold
Germany

www.weidmueller.com

**Flexible**

The four module sizes make for individual plug solutions that save a huge amount of space. The smaller pitch translates into an optimised design too.

General ordering data

Version	Power module, 500 V, 40 A, Number of poles: 7, Crimp connection, Male, Required plug-in slots: 1
Order No.	2748360000
Type	HDC MHX 3/4 MC
GTIN (EAN)	4050118890976
Qty.	5 items

HDC MHX 3/4 MC

Weidmüller Interface GmbH & Co. KG
Klingenbergstraße 26
D-32758 Detmold
Germany

www.weidmueller.com

Technical data

Approvals

Approvals



ROHS	Conform
UL File Number Search	UL Website
Certificate No. (UR)	E92202
Certificate No. (cURus)	E310075

Dimensions and weights

Depth	34 mm	Depth (inches)	1.3386 inch
Height	44.3 mm	Height (inches)	1.7441 inch
Width	34.2 mm	Width (inches)	1.3465 inch
Net weight	12.75 g		

Temperatures

Limit temperature -40 °C ... 125 °C

Environmental Product Compliance

RoHS Compliance Status	Compliant without exemption
REACH SVHC	No SVHC above 0.1 wt%

General data

Number of poles	7	UL 94 flammability rating	V-0
Plugging cycles	≥ 500	Type	Male
Surge voltage category	III	Pollution severity	3
Basic material	Polycarbonate	Series	ModuPlug
Rated voltage (DIN EN 61984)	500 V	Rated voltage according to UL/CSA	600 V
Rated impulse voltage (DIN EN 61984)	8 kV	Rated current (DIN EN 61984)	40 A
Required plug-in slots	1		

PE connection data

Connection type PE Screw connection via module frame

Version

Type of connection	Crimp connection	Conductor cross-section, max.	6 mm ²
Conductor cross-section, min.	1.5 mm ²		

Power contact

Type of connection, power contact	Crimp connection
Number of poles, performance contact	3
Stripping length, performance contact	9 mm
Clamping range, power contact, max.	6 mm ²
Clamping range, power contact, min.	1.5 mm ²
Rated voltage (DIN EN 61984), power contact	500 V

HDC MHX 3/4 MC

Weidmüller Interface GmbH & Co. KG
 Klingenbergstraße 26
 D-32758 Detmold
 Germany

www.weidmueller.com

Technical data

Rated impulse voltage (DIN EN 61984), 8 kV
 power contact

Rated current (DIN EN 61984), power 40 A
 contact

Tightening torque, max. according to the conductor cross-section	Conductor cross-section, min.	1.5 mm ²
	Conductor cross-section, max.	6 mm ²

Signal contact

Type of connection, signal	Crimp connection	Number of poles, signal	4
Clamping range, signal contact, max.	2.5 mm ²	Clamping range, signal contact, min.	0.14 mm ²
Stripping length, signal	8 mm	Rated voltage (DIN EN 61984), signal contact	500 V
Rated impulse voltage (DIN EN 61984), 8 kV signal		Rated current (DIN EN 61984), signal	10 A

Classifications

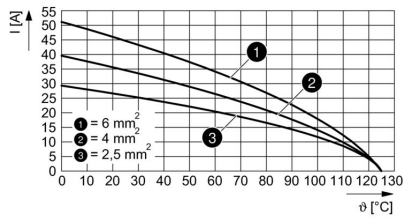
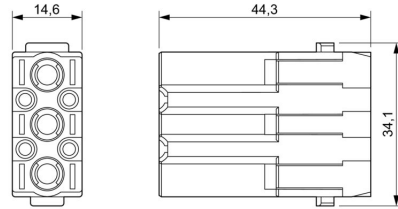
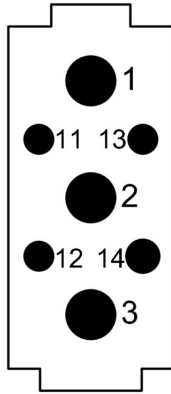
ETIM 8.0	EC000438	ETIM 9.0	EC000438
ETIM 10.0	EC000438	ECLASS 14.0	27-44-02-17
ECLASS 15.0	27-44-02-17		

HDC MHX 3/4 MC

Weidmüller Interface GmbH & Co. KG
 Klingenbergstraße 26
 D-32758 Detmold
 Germany

Drawings

www.weidmueller.com



HDC MHX 3/4 MC

Weidmüller Interface GmbH & Co. KG
 Klingenbergstraße 26
 D-32758 Detmold
 Germany

www.weidmueller.com

Accessories

Crimp contacts HX



Crimps provide a electrical and mechanical connection between wire and contact that is both secure and reliable. The optimal crimp connection is gas-tight and corrosion-resistant.

General ordering data

Type	HDC C HX SM1.5AG	Version
Order No.	1002910000	Heavy-duty connectors, Crimp contact, MixMate, Male, Conductor
GTIN (EAN)	4032248697090	cross-section, max.: 1.5, turned, Copper alloy
Qty.	25 ST	
Type	HDC C HX SM2.5AG	Version
Order No.	1002920000	Heavy-duty connectors, Crimp contact, MixMate, Male, Conductor
GTIN (EAN)	4032248697106	cross-section, max.: 2.5, turned, Copper alloy
Qty.	25 ST	
Type	HDC C HX SM4.0AG	Version
Order No.	1002930000	Heavy-duty connectors, Crimp contact, MixMate, Male, Conductor
GTIN (EAN)	4032248697212	cross-section, max.: 4, turned, Copper alloy
Qty.	25 ST	
Type	HDC C HX SM6.0AG	Version
Order No.	1002940000	Heavy-duty connectors, Crimp contact, MixMate, Male, Conductor
GTIN (EAN)	4032248697229	cross-section, max.: 6, turned, Copper alloy
Qty.	25 ST	
Type	HDC C MHX SM10.0AG	Version
Order No.	2494550000	Heavy-duty connectors, Crimp contact, MHX, Male, Conductor cross-
GTIN (EAN)	4050118504521	section, max.: 8, turned, Copper alloy
Qty.	25 ST	

Crimp contacts HD



Crimps provide a electrical and mechanical connection between wire and contact that is both secure and reliable. The optimal crimp connection is gas-tight and corrosion-resistant.

General ordering data

Type	HDC-C-HD-SM0.14-0.37AG	Version
Order No.	1651520000	Heavy-duty connectors, Crimp contact, HD, HDD, HQ, MixMate, Male,
GTIN (EAN)	4008190400194	Conductor cross-section, max.: 0.37, turned, Copper alloy
Qty.	100 ST	

HDC MHX 3/4 MC

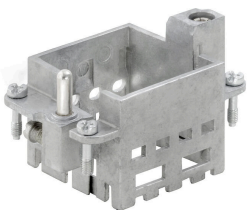
Weidmüller Interface GmbH & Co. KG
 Klingenbergstraße 26
 D-32758 Detmold
 Germany

www.weidmueller.com

Accessories

Type	HDC-C-HD-SM0.14-0.37AU	Version
Order No.	1651620000	Heavy-duty connectors, Crimp contact, HD, HDD, HQ, MixMate, Male,
GTIN (EAN)	4008190400293	Conductor cross-section, max.: 0.37, turned, Copper alloy
Qty.	100 ST	
Type	HDC-C-HD-SM0.5AG	Version
Order No.	1651530000	Heavy-duty connectors, Crimp contact, HD, HDD, HQ, MixMate, Male,
GTIN (EAN)	4008190400200	Conductor cross-section, max.: 0.5, turned, Copper alloy
Qty.	100 ST	
Type	HDC-C-HD-SM0.5AU	Version
Order No.	1651630000	Heavy-duty connectors, Crimp contact, HD, HDD, HQ, MixMate, Male,
GTIN (EAN)	4008190400309	Conductor cross-section, max.: 0.5, turned, Copper alloy
Qty.	100 ST	
Type	HDC-C-HD-SM0.75-1.00AG	Version
Order No.	1601750000	Heavy-duty connectors, Crimp contact, HD, HDD, HQ, MixMate, Male,
GTIN (EAN)	4008190134280	Conductor cross-section, max.: 1, turned, Copper alloy
Qty.	100 ST	
Type	HDC-C-HD-SM0.75-1.00AU	Version
Order No.	1651640000	Heavy-duty connectors, Crimp contact, HD, HDD, HQ, MixMate, Male,
GTIN (EAN)	4008190400316	Conductor cross-section, max.: 1, turned, Copper alloy
Qty.	100 ST	
Type	HDC-C-HD-SM1.5AG	Version
Order No.	1651550000	Heavy-duty connectors, Crimp contact, HD, HDD, HQ, MixMate, Male,
GTIN (EAN)	4008190400224	Conductor cross-section, max.: 1.5, turned, Copper alloy
Qty.	100 ST	
Type	HDC-C-HD-SM1.5AU	Version
Order No.	1651650000	Heavy-duty connectors, Crimp contact, HD, HDD, HQ, MixMate, Male,
GTIN (EAN)	4008190400323	Conductor cross-section, max.: 1.5, turned, Copper alloy
Qty.	100 ST	
Type	HDC-C-HD-SM2.5AG	Version
Order No.	1651560000	Heavy-duty connectors, Crimp contact, HD, HDD, HQ, MixMate, Male,
GTIN (EAN)	4008190400231	Conductor cross-section, max.: 2.5, turned, Copper alloy
Qty.	100 ST	
Type	HDC-C-HD-SM2.5AU	Version
Order No.	1651660000	Heavy-duty connectors, Crimp contact, HD, HDD, HQ, MixMate, Male,
GTIN (EAN)	4008190400330	Conductor cross-section, max.: 2.5, turned, Copper alloy
Qty.	100 ST	

Standard



HDC MHX 3/4 MC

Weidmüller Interface GmbH & Co. KG
 Klingenbergstraße 26
 D-32758 Detmold
 Germany

www.weidmueller.com

Accessories

General ordering data

Type	HDC MF 6B AB	Version
Order No.	1428920000	Frame
GTIN (EAN)	4050118233414	
Qty.	1 ST	
Type	HDC MF 6B BA	Version
Order No.	1428940000	Frame
GTIN (EAN)	4050118233353	
Qty.	1 ST	
Type	HDC MF 10B AC	Version
Order No.	1428960000	Frame
GTIN (EAN)	4050118233223	
Qty.	1 ST	
Type	HDC MF 10B CA	Version
Order No.	1428980000	Frame
GTIN (EAN)	4050118233278	
Qty.	1 ST	
Type	HDC MF 16B AD	Version
Order No.	1429010000	Frame
GTIN (EAN)	4050118233315	
Qty.	1 ST	
Type	HDC MF 16B DA	Version
Order No.	1429030000	Frame
GTIN (EAN)	4050118233407	
Qty.	1 ST	
Type	HDC MF 24B AF	Version
Order No.	1429050000	Frame
GTIN (EAN)	4050118233285	
Qty.	1 ST	
Type	HDC MF 24B FA	Version
Order No.	1429070000	Frame
GTIN (EAN)	4050118233520	
Qty.	1 ST	

HDC MHX 3/4 MC

Weidmüller Interface GmbH & Co. KG
Klingenbergstraße 26
D-32758 Detmold
Germany

Counterpart

www.weidmueller.com

Electrical modules



Flexible

The four module sizes make for individual plug solutions that save a huge amount of space. The smaller pitch translates into an optimised design too.

General ordering data

Type	HDC MHX 3/4 FC	Version	
Order No.	2748370000	Power module, 500 V, 40 A, Number of poles: 7, Crimp connection,	
GTIN (EAN)	4050118891010	Female, Required plug-in slots: 1	
Qty.	5 ST		