

HDC MHX 2 FC**Weidmüller Interface GmbH & Co. KG**

Klingenbergstraße 26

D-32758 Detmold

Germany

www.weidmueller.com

**Flexible**

The four module sizes make for individual plug solutions that save a huge amount of space. The smaller pitch translates into an optimised design too.

General ordering data

Version	Power module, 830 V, 40 A, Number of poles: 2, Crimp connection, Female, Required plug-in slots: 1
Order No.	2748350000
Type	HDC MHX 2 FC
GTIN (EAN)	4050118890983
Qty.	5 items

HDC MHX 2 FC

Weidmüller Interface GmbH & Co. KG
Klingenbergstraße 26
D-32758 Detmold
Germany

www.weidmueller.com

Technical data

Approvals

Approvals



ROHS	Conform
UL File Number Search	UL Website
Certificate No. (UR)	E92202
Certificate No. (cURus)	E310075

Dimensions and weights

Depth	34 mm	Depth (inches)	1.3386 inch
Height	42.4 mm	Height (inches)	1.6693 inch
Width	34.2 mm	Width (inches)	1.3465 inch
Net weight	11.31 g		

Temperatures

Limit temperature -40 °C ... 125 °C

Environmental Product Compliance

RoHS Compliance Status	Compliant without exemption
REACH SVHC	No SVHC above 0.1 wt%

General data

Number of poles	2	UL 94 flammability rating	V-0
Plugging cycles	≥ 500	Type	Female
Surge voltage category	III	Pollution severity	3
Basic material	Polycarbonate	Rated voltage (DIN EN 61984)	830 V
Rated voltage according to UL/CSA	600 V	Rated impulse voltage (DIN EN 61984)	8 kV
Rated current (DIN EN 61984)	40 A	Required plug-in slots	1

PE connection data

Connection type PE Screw connection via module frame

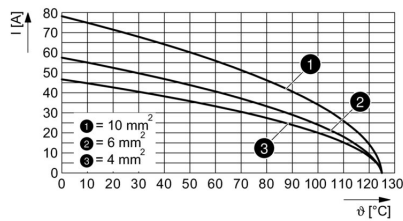
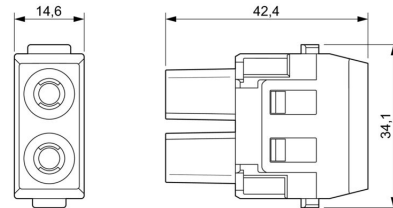
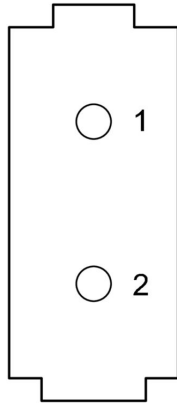
Version

Wire connection cross section AWG, max.	AWG 8	Type of connection	Crimp connection
Wire connection cross section AWG, min.	AWG 16	Conductor cross-section, max.	10 mm ²
Conductor cross-section, min.	1.5 mm ²		

Classifications

ETIM 8.0	EC000438	ETIM 9.0	EC000438
ETIM 10.0	EC000438	ECLASS 14.0	27-44-02-17
ECLASS 15.0	27-44-02-17		

Drawings



HDC MHX 2 FC

Weidmüller Interface GmbH & Co. KG
 Klingenbergstraße 26
 D-32758 Detmold
 Germany

Accessories

www.weidmueller.com

Crimp contacts HX

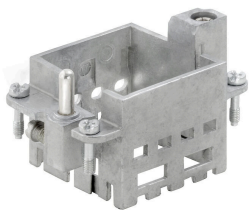


Crimps provide a electrical and mechanical connection between wire and contact that is both secure and reliable. The optimal crimp connection is gas-tight and corrosion-resistant.

General ordering data

Type	HDC C HX BM1.5AG	Version
Order No.	1002950000	Heavy-duty connectors, Crimp contact, MixMate, Female, Conductor
GTIN (EAN)	4032248697236	cross-section, max.: 1.5, turned, Copper alloy
Qty.	25 ST	
Type	HDC C HX BM2.5AG	Version
Order No.	1002960000	Heavy-duty connectors, Crimp contact, MixMate, Female, Conductor
GTIN (EAN)	4032248697243	cross-section, max.: 2.5, turned, Copper alloy
Qty.	25 ST	
Type	HDC C HX BM4.0AG	Version
Order No.	1002970000	Heavy-duty connectors, Crimp contact, HQ, MixMate, Female,
GTIN (EAN)	4032248697250	Conductor cross-section, max.: 4, turned, Copper alloy
Qty.	25 ST	
Type	HDC C HX BM6.0AG	Version
Order No.	1002980000	Heavy-duty connectors, Crimp contact, MixMate, Female, Conductor
GTIN (EAN)	4032248697267	cross-section, max.: 6, turned, Copper alloy
Qty.	25 ST	
Type	HDC C MHX BM10.0AG	Version
Order No.	2494560000	Heavy-duty connectors, Crimp contact, MHX, Female, Conductor
GTIN (EAN)	4050118504538	cross-section, max.: 8, turned, Copper alloy
Qty.	25 ST	

Standard



Simple
 The innovative sliding frame has two defined lock-in positions for opening and closing. This enables simple and tool-free module assembly.

General ordering data

Type	HDC MF 6B AB	Version
Order No.	1428920000	Frame
GTIN (EAN)	4050118233414	
Qty.	1 ST	

HDC MHX 2 FC

Weidmüller Interface GmbH & Co. KG
 Klingenbergstraße 26
 D-32758 Detmold
 Germany

www.weidmueller.com

Accessories

Type	HDC MF 6B BA	Version
Order No.	1428940000	Frame
GTIN (EAN)	4050118233353	
Qty.	1 ST	
Type	HDC MF 10B AC	Version
Order No.	1428960000	Frame
GTIN (EAN)	4050118233223	
Qty.	1 ST	
Type	HDC MF 10B CA	Version
Order No.	1428980000	Frame
GTIN (EAN)	4050118233278	
Qty.	1 ST	
Type	HDC MF 16B AD	Version
Order No.	1429010000	Frame
GTIN (EAN)	4050118233315	
Qty.	1 ST	
Type	HDC MF 16B DA	Version
Order No.	1429030000	Frame
GTIN (EAN)	4050118233407	
Qty.	1 ST	
Type	HDC MF 24B AF	Version
Order No.	1429050000	Frame
GTIN (EAN)	4050118233285	
Qty.	1 ST	
Type	HDC MF 24B FA	Version
Order No.	1429070000	Frame
GTIN (EAN)	4050118233520	
Qty.	1 ST	

HDC MHX 2 FC

Weidmüller Interface GmbH & Co. KG
 Klingenbergstraße 26
 D-32758 Detmold
 Germany

www.weidmueller.com

Counterpart

Electrical modules



Flexible

The four module sizes make for individual plug solutions that save a huge amount of space. The smaller pitch translates into an optimised design too.

General ordering data

Type	HDC MHX 2 MAS	Version
Order No.	2748320000	Power module, 690 V, 40 A, Number of poles: 2, Axial screw connection, Male, Required plug-in slots: 1
GTIN (EAN)	4050118891027	
Qty.	2 ST	
Type	HDC MHX 2 MC	Version
Order No.	2748340000	Power module, 830 V, 40 A, Number of poles: 2, Crimp connection, Male, Required plug-in slots: 1
GTIN (EAN)	4050118890990	
Qty.	5 ST	