

HDC MHX 2 FAS

Weidmüller Interface GmbH & Co. KG
Klingenbergstraße 26
D-32758 Detmold
Germany

www.weidmueller.com



Flexible

The four module sizes make for individual plug solutions that save a huge amount of space. The smaller pitch translates into an optimised design too.

General ordering data

Version	Power module, 690 V, 40 A, Number of poles: 2, Axial screw connection, Female, Required plug-in slots: 1
Order No.	2748330000
Type	HDC MHX 2 FAS
GTIN (EAN)	4050118891102
Qty.	2 items

HDC MHX 2 FAS

Weidmüller Interface GmbH & Co. KG
Klingenbergstraße 26
D-32758 Detmold
Germany

www.weidmueller.com

Technical data

Approvals

Approvals



ROHS	Conform
UL File Number Search	UL Website
Certificate No. (UR)	E92202
Certificate No. (cURus)	E310075

Dimensions and weights

Depth	34 mm	Depth (inches)	1.3386 inch
Height	33.5 mm	Height (inches)	1.3189 inch
Width	34.2 mm	Width (inches)	1.3465 inch
Net weight	28 g		

Temperatures

Limit temperature -40 °C ... 125 °C

Environmental Product Compliance

RoHS Compliance Status	Compliant with exemption
RoHS Exemption (if applicable/known)	6c
REACH SVHC	Lead 7439-92-1
SCIP	fa505316-3e43-4ad0-930c-360dfdbe182a

General data

Number of poles	2	UL 94 flammability rating	V-0
Plugging cycles	≥ 500	Type	Female
Surge voltage category	III	Pollution severity	3
Basic material	Polycarbonate	Series	ModuPlug
Rated voltage (DIN EN 61984)	690 V	Rated voltage according to UL/CSA	600 V
Rated impulse voltage (DIN EN 61984)	8 kV	Rated current (DIN EN 61984)	40 A
Required plug-in slots	1		

PE connection data

Connection type PE Screw connection via module frame

Version

Type of connection	Axial screw connection	Conductor cross-section, max.	10 mm ²
Conductor cross-section, min.	2.5 mm ²		

Power contact

Tightening torque, power contact, max.	2 Nm	
Tightening torque, power contact, min.	1.5 Nm	
Clamping range, power contact, max.	10 mm ²	
Clamping range, power contact, min.	2.5 mm ²	
Tightening torque, max. according to the conductor cross-section	Conductor cross-section, min.	2.5 mm ²
	Conductor cross-section, max.	4 mm ²

HDC MHX 2 FAS

Weidmüller Interface GmbH & Co. KG
 Klingenbergstraße 26
 D-32758 Detmold
 Germany

www.weidmueller.com

Technical data

	Tightening torque, max.	1.5 Nm
	Conductor cross-section, min.	6 mm ²
	Conductor cross-section, max.	10 mm ²
	Tightening torque, max.	2 Nm
Stripping length according to the cable diameter	Cable diameter, max.	4.8 mm
	Stripping length	9.00 mm
	Cable diameter, max.	6.5 mm
	Stripping length	11.00 mm
Hexagon socket	2 mm	

Classifications

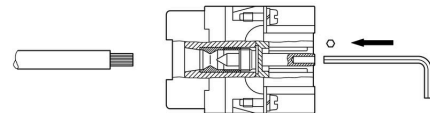
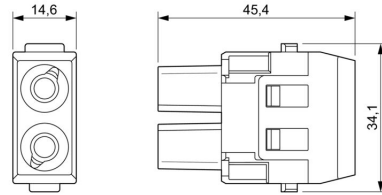
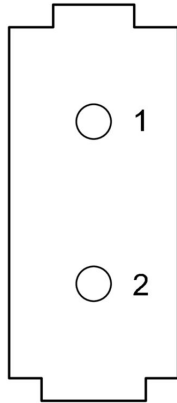
ETIM 8.0	EC000438	ETIM 9.0	EC000438
ETIM 10.0	EC000438	ECLASS 14.0	27-44-02-17
ECLASS 15.0	27-44-02-17		

HDC MHX 2 FAS

Weidmüller Interface GmbH & Co. KG
 Klingenbergstraße 26
 D-32758 Detmold
 Germany

Drawings

www.weidmueller.com



HDC MHX 2 FAS

Weidmüller Interface GmbH & Co. KG
 Klingenbergstraße 26
 D-32758 Detmold
 Germany

Accessories

www.weidmueller.com

Standard



General ordering data

Type	HDC MF 6B AB	Version	
Order No.	1428920000	Frame	
GTIN (EAN)	4050118233414		
Qty.	1 ST		
Type	HDC MF 6B BA	Version	
Order No.	1428940000	Frame	
GTIN (EAN)	4050118233353		
Qty.	1 ST		
Type	HDC MF 10B AC	Version	
Order No.	1428960000	Frame	
GTIN (EAN)	4050118233223		
Qty.	1 ST		
Type	HDC MF 10B CA	Version	
Order No.	1428980000	Frame	
GTIN (EAN)	4050118233278		
Qty.	1 ST		
Type	HDC MF 16B AD	Version	
Order No.	1429010000	Frame	
GTIN (EAN)	4050118233315		
Qty.	1 ST		
Type	HDC MF 16B DA	Version	
Order No.	1429030000	Frame	
GTIN (EAN)	4050118233407		
Qty.	1 ST		
Type	HDC MF 24B AF	Version	
Order No.	1429050000	Frame	
GTIN (EAN)	4050118233285		
Qty.	1 ST		
Type	HDC MF 24B FA	Version	
Order No.	1429070000	Frame	
GTIN (EAN)	4050118233520		
Qty.	1 ST		

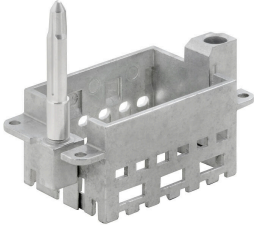
HDC MHX 2 FAS

Weidmüller Interface GmbH & Co. KG
 Klingenbergstraße 26
 D-32758 Detmold
 Germany

Accessories

www.weidmueller.com

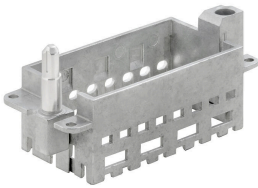
With long guiding pin



General ordering data

Type	HDC MFGL 10B AC	Version	
Order No.	2736990000	Frame	
GTIN (EAN)	4050118823042		
Qty.	1 ST		
Type	HDC MFGL 6B AB	Version	
Order No.	2736970000	Frame	
GTIN (EAN)	4050118823035		
Qty.	1 ST		
Type	HDC MFGL 24B FA	Version	
Order No.	2737040000	Frame	
GTIN (EAN)	4050118823097		
Qty.	1 ST		

With short guiding pin



General ordering data

Type	HDC MFGS 16B DA	Version	
Order No.	2736940000	Frame	
GTIN (EAN)	4050118823004		
Qty.	1 ST		
Type	HDC MFGS 24B AF	Version	
Order No.	2736950000	Frame	
GTIN (EAN)	4050118823011		
Qty.	1 ST		

HDC MHX 2 FAS

Weidmüller Interface GmbH & Co. KG
Klingenbergstraße 26
D-32758 Detmold
Germany

www.weidmueller.com

Accessories

With long guiding pin



General ordering data

Type	HDC MFGL 16B DA	Version	
Order No.	2737020000	Frame	
GTIN (EAN)	4050118823073		
Qty.	1 ST		

With short guiding pin



General ordering data

Type	HDC MFGL 16B AD	Version	
Order No.	2736930000	Frame	
GTIN (EAN)	4050118822298		
Qty.	1 ST		

With long guiding pin



General ordering data

Type	HDC MFGL 16B AD	Version	
Order No.	2737010000	Frame	
GTIN (EAN)	4050118823066		
Qty.	1 ST		

HDC MHX 2 FAS

Weidmüller Interface GmbH & Co. KG
 Klingenbergstraße 26
 D-32758 Detmold
 Germany

Accessories

www.weidmueller.com

With short guiding pin



General ordering data

Type	HDC MFGS 6B AB	Version	
Order No.	2736890000	Frame	
GTIN (EAN)	4050118822250		
Qty.	1 ST		
Type	HDC MFGS 24B FA	Version	
Order No.	2736960000	Frame	
GTIN (EAN)	4050118823028		
Qty.	1 ST		
Type	HDC MFGS 10B AC	Version	
Order No.	2736910000	Frame	
GTIN (EAN)	4050118822274		
Qty.	1 ST		

With long guiding pin



General ordering data

Type	HDC MFGL 24B AF	Version	
Order No.	2737030000	Frame	
GTIN (EAN)	4050118823080		
Qty.	1 ST		
Type	HDC MFGL 10B CA	Version	
Order No.	2737000000	Frame	
GTIN (EAN)	4050118823059		
Qty.	1 ST		

HDC MHX 2 FAS

Weidmüller Interface GmbH & Co. KG
 Klingenbergstraße 26
 D-32758 Detmold
 Germany

www.weidmueller.com

Accessories

With short guiding pin

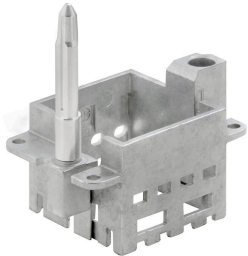


General ordering data

Type	HDC MFGS 6B BA	Version	
Order No.	2736900000	Frame	
GTIN (EAN)	4050118822267		
Qty.	1 ST		

Type	HDC MFGS 10B CA	Version	
Order No.	2736920000	Frame	
GTIN (EAN)	4050118822281		
Qty.	1 ST		

With long guiding pin



General ordering data

Type	HDC MFGL 6B BA	Version	
Order No.	2736980000	Frame	
GTIN (EAN)	4050118822908		
Qty.	1 ST		

HDC MHX 2 FAS

Weidmüller Interface GmbH & Co. KG
 Klingenbergstraße 26
 D-32758 Detmold
 Germany

Counterpart

www.weidmueller.com

Electrical modules



Flexible
 The four module sizes make for individual plug solutions that save a huge amount of space. The smaller pitch translates into an optimised design too.

General ordering data

Type	HDC MHX 2 MAS	Version	
Order No.	2748320000		Power module, 690 V, 40 A, Number of poles: 2, Axial screw connection, Male, Required plug-in slots: 1
GTIN (EAN)	4050118891027		
Qty.	2 ST		
Type	HDC MHX 2 MC	Version	
Order No.	2748340000		Power module, 830 V, 40 A, Number of poles: 2, Crimp connection, Male, Required plug-in slots: 1
GTIN (EAN)	4050118890990		
Qty.	5 ST		