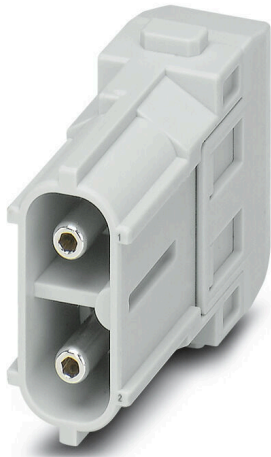


**HDC MHX 2 MAS**

**Weidmüller Interface GmbH & Co. KG**  
Klingenbergstraße 26  
D-32758 Detmold  
Germany

www.weidmueller.com

**Flexible**

The four module sizes make for individual plug solutions that save a huge amount of space. The smaller pitch translates into an optimised design too.

**General ordering data**

|            |  |
|------------|--|
| Version    | Power module, 690 V, 40 A, Number of poles: 2, Axial screw connection, Male, Required plug-in slots: 1 |
| Order No.  | <a href="#">2748320000</a>   |
| Type       | HDC MHX 2 MAS  |
| GTIN (EAN) | 4050118891027  |
| Qty.       | 2 items  |

## HDC MHX 2 MAS

Weidmüller Interface GmbH & Co. KG  
Klingenbergstraße 26  
D-32758 Detmold  
Germany

www.weidmueller.com

## Technical data

## Approvals

Approvals



|                         |                            |
|-------------------------|----------------------------|
| ROHS                    | Conform                    |
| UL File Number Search   | <a href="#">UL Website</a> |
| Certificate No. (UR)    | E92202                     |
| Certificate No. (cURus) | E310075                    |

## Dimensions and weights

|            |         |                 |             |
|------------|---------|-----------------|-------------|
| Depth      | 34 mm   | Depth (inches)  | 1.3386 inch |
| Height     | 34.7 mm | Height (inches) | 1.3661 inch |
| Width      | 34.2 mm | Width (inches)  | 1.3465 inch |
| Net weight | 26 g    |                 |             |

## Temperatures

Limit temperature -40 °C ... 125 °C

## Environmental Product Compliance

|                                      |                                      |
|--------------------------------------|--------------------------------------|
| RoHS Compliance Status               | Compliant with exemption             |
| RoHS Exemption (if applicable/known) | 6c                                   |
| REACH SVHC                           | Lead 7439-92-1                       |
| SCIP                                 | fa505316-3e43-4ad0-930c-360dfdbe182a |

## General data

|                                      |               |                                   |          |
|--------------------------------------|---------------|-----------------------------------|----------|
| Number of poles                      | 2             | UL 94 flammability rating         | V-0      |
| Plugging cycles                      | ≥ 500         | Type                              | Male     |
| Surge voltage category               | III           | Pollution severity                | 3        |
| Basic material                       | Polycarbonate | Series                            | ModuPlug |
| Rated voltage (DIN EN 61984)         | 690 V         | Rated voltage according to UL/CSA | 600 V    |
| Rated impulse voltage (DIN EN 61984) | 8 kV          | Rated current (DIN EN 61984)      | 40 A     |
| Required plug-in slots               | 1             |                                   |          |

## PE connection data

Connection type PE Screw connection via module frame

## Version

|                               |                        |                               |                    |
|-------------------------------|------------------------|-------------------------------|--------------------|
| Type of connection            | Axial screw connection | Conductor cross-section, max. | 10 mm <sup>2</sup> |
| Conductor cross-section, min. | 2.5 mm <sup>2</sup>    |                               |                    |

## Power contact

|  |                               |                     |
|--|-------------------------------|---------------------|
| Tightening torque, power contact, max.                           | 2 Nm                          |                     |
| Tightening torque, power contact, min.                           | 1.5 Nm                        |                     |
| Clamping range, power contact, max.                              | 10 mm <sup>2</sup>            |                     |
| Clamping range, power contact, min.                              | 2.5 mm <sup>2</sup>           |                     |
| Tightening torque, max. according to the conductor cross-section | Conductor cross-section, min. | 2.5 mm <sup>2</sup> |
|  | Conductor cross-section, max. | 4 mm <sup>2</sup>   |

## HDC MHX 2 MAS

**Weidmüller Interface GmbH & Co. KG**  
 Klingenbergstraße 26  
 D-32758 Detmold  
 Germany

[www.weidmueller.com](http://www.weidmueller.com)

## Technical data

|  |                               |                   |
|--|-------------------------------|-------------------|
|  | Tightening torque, max.       | 1.5 Nm            |
|  | Conductor cross-section, min. | 6 mm <sup>2</sup> |
|  | Conductor cross-section, max. | 8 mm <sup>2</sup> |
|  | Tightening torque, max.       | 2 Nm              |
| Stripping length according to the cable diameter | Cable diameter, max.          | 4.8 mm            |
|  | Stripping length              | 9.00 mm           |
|  | Cable diameter, max.          | 6.5 mm            |
|  | Stripping length              | 11.00 mm          |
| Hexagon socket                                   | 2 mm                          |                   |

## Classifications

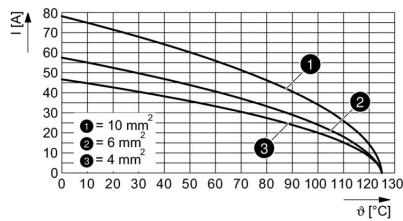
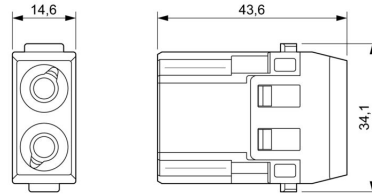
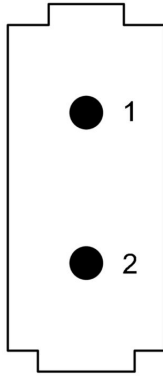
|             |             |             |             |
|-------------|-------------|-------------|-------------|
| ETIM 8.0    | EC000438    | ETIM 9.0    | EC000438    |
| ETIM 10.0   | EC000438    | ECLASS 14.0 | 27-44-02-17 |
| ECLASS 15.0 | 27-44-02-17 |             |             |

HDC MHX 2 MAS

Weidmüller Interface GmbH & Co. KG  
Klingenbergstraße 26  
D-32758 Detmold  
Germany

Drawings

www.weidmueller.com



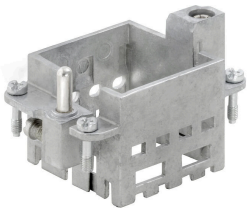
## HDC MHX 2 MAS

**Weidmüller Interface GmbH & Co. KG**  
 Klingenbergstraße 26  
 D-32758 Detmold  
 Germany

## Accessories

www.weidmueller.com

## Standard



## General ordering data

|            |                            |         |
|------------|----------------------------|---------|
| Type       | HDC MF 6B AB               | Version |
| Order No.  | <a href="#">1428920000</a> | Frame   |
| GTIN (EAN) | 4050118233414              |         |
| Qty.       | 1 ST                       |         |
| Type       | HDC MF 6B BA               | Version |
| Order No.  | <a href="#">1428940000</a> | Frame   |
| GTIN (EAN) | 4050118233353              |         |
| Qty.       | 1 ST                       |         |
| Type       | HDC MF 10B AC              | Version |
| Order No.  | <a href="#">1428960000</a> | Frame   |
| GTIN (EAN) | 4050118233223              |         |
| Qty.       | 1 ST                       |         |
| Type       | HDC MF 10B CA              | Version |
| Order No.  | <a href="#">1428980000</a> | Frame   |
| GTIN (EAN) | 4050118233278              |         |
| Qty.       | 1 ST                       |         |
| Type       | HDC MF 16B AD              | Version |
| Order No.  | <a href="#">1429010000</a> | Frame   |
| GTIN (EAN) | 4050118233315              |         |
| Qty.       | 1 ST                       |         |
| Type       | HDC MF 16B DA              | Version |
| Order No.  | <a href="#">1429030000</a> | Frame   |
| GTIN (EAN) | 4050118233407              |         |
| Qty.       | 1 ST                       |         |
| Type       | HDC MF 24B AF              | Version |
| Order No.  | <a href="#">1429050000</a> | Frame   |
| GTIN (EAN) | 4050118233285              |         |
| Qty.       | 1 ST                       |         |
| Type       | HDC MF 24B FA              | Version |
| Order No.  | <a href="#">1429070000</a> | Frame   |
| GTIN (EAN) | 4050118233520              |         |
| Qty.       | 1 ST                       |         |

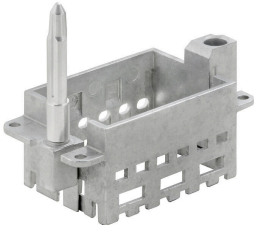
## HDC MHX 2 MAS

**Weidmüller Interface GmbH & Co. KG**  
 Klingenbergstraße 26  
 D-32758 Detmold  
 Germany

## Accessories

www.weidmueller.com

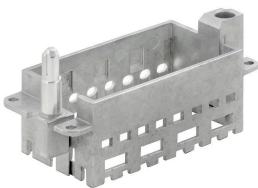
## With long guiding pin



## General ordering data

|            |                            |         |  |
|------------|----------------------------|---------|--|
| Type       | HDC MFGL 10B AC            | Version |  |
| Order No.  | <a href="#">2736990000</a> | Frame   |  |
| GTIN (EAN) | 4050118823042              |         |  |
| Qty.       | 1 ST                       |         |  |
| Type       | HDC MFGL 6B AB             | Version |  |
| Order No.  | <a href="#">2736970000</a> | Frame   |  |
| GTIN (EAN) | 4050118823035              |         |  |
| Qty.       | 1 ST                       |         |  |
| Type       | HDC MFGL 24B FA            | Version |  |
| Order No.  | <a href="#">2737040000</a> | Frame   |  |
| GTIN (EAN) | 4050118823097              |         |  |
| Qty.       | 1 ST                       |         |  |

## With short guiding pin



## General ordering data

|            |                            |         |  |
|------------|----------------------------|---------|--|
| Type       | HDC MFGS 16B DA            | Version |  |
| Order No.  | <a href="#">2736940000</a> | Frame   |  |
| GTIN (EAN) | 4050118823004              |         |  |
| Qty.       | 1 ST                       |         |  |
| Type       | HDC MFGS 24B AF            | Version |  |
| Order No.  | <a href="#">2736950000</a> | Frame   |  |
| GTIN (EAN) | 4050118823011              |         |  |
| Qty.       | 1 ST                       |         |  |

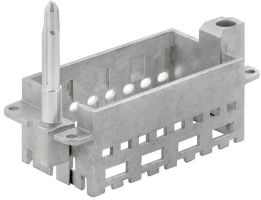
## HDC MHX 2 MAS

**Weidmüller Interface GmbH & Co. KG**  
Klingenbergstraße 26  
D-32758 Detmold  
Germany

[www.weidmueller.com](http://www.weidmueller.com)

## Accessories

### With long guiding pin

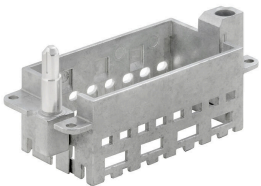


#### General ordering data

|            |                            |
|------------|----------------------------|
| Type       | HDC MFGL 16B DA            |
| Order No.  | <a href="#">2737020000</a> |
| GTIN (EAN) | 4050118823073              |
| Qty.       | 1 ST                       |

|         |  |
|---------|--|
| Version |  |
| Frame   |  |

### With short guiding pin

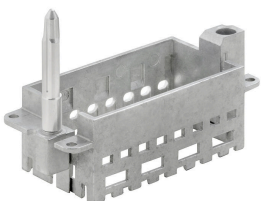


#### General ordering data

|            |                            |
|------------|----------------------------|
| Type       | HDC MFGL 16B DA            |
| Order No.  | <a href="#">2736930000</a> |
| GTIN (EAN) | 4050118822298              |
| Qty.       | 1 ST                       |

|         |  |
|---------|--|
| Version |  |
| Frame   |  |

### With long guiding pin



#### General ordering data

|            |                            |
|------------|----------------------------|
| Type       | HDC MFGL 16B AD            |
| Order No.  | <a href="#">2737010000</a> |
| GTIN (EAN) | 4050118823066              |
| Qty.       | 1 ST                       |

|         |  |
|---------|--|
| Version |  |
| Frame   |  |

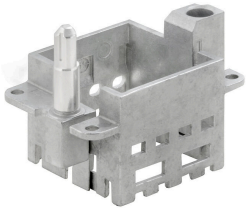
## HDC MHX 2 MAS

**Weidmüller Interface GmbH & Co. KG**  
 Klingenbergstraße 26  
 D-32758 Detmold  
 Germany

## Accessories

www.weidmueller.com

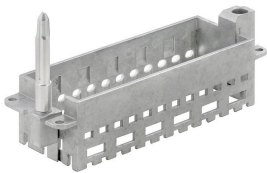
### With short guiding pin



#### General ordering data

|            |                            |         |  |
|------------|----------------------------|---------|--|
| Type       | HDC MFGS 6B AB             | Version |  |
| Order No.  | <a href="#">2736890000</a> | Frame   |  |
| GTIN (EAN) | 4050118822250              |         |  |
| Qty.       | 1 ST                       |         |  |
| Type       | HDC MFGS 24B FA            | Version |  |
| Order No.  | <a href="#">2736960000</a> | Frame   |  |
| GTIN (EAN) | 4050118823028              |         |  |
| Qty.       | 1 ST                       |         |  |
| Type       | HDC MFGS 10B AC            | Version |  |
| Order No.  | <a href="#">2736910000</a> | Frame   |  |
| GTIN (EAN) | 4050118822274              |         |  |
| Qty.       | 1 ST                       |         |  |

### With long guiding pin



#### General ordering data

|            |                            |         |  |
|------------|----------------------------|---------|--|
| Type       | HDC MFGL 24B AF            | Version |  |
| Order No.  | <a href="#">2737030000</a> | Frame   |  |
| GTIN (EAN) | 4050118823080              |         |  |
| Qty.       | 1 ST                       |         |  |
| Type       | HDC MFGL 10B CA            | Version |  |
| Order No.  | <a href="#">2737000000</a> | Frame   |  |
| GTIN (EAN) | 4050118823059              |         |  |
| Qty.       | 1 ST                       |         |  |

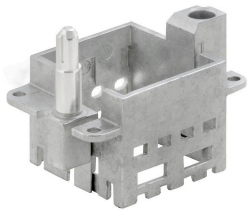
**HDC MHX 2 MAS**

**Weidmüller Interface GmbH & Co. KG**  
 Klingenbergstraße 26  
 D-32758 Detmold  
 Germany

www.weidmueller.com

**Accessories**

**With short guiding pin**

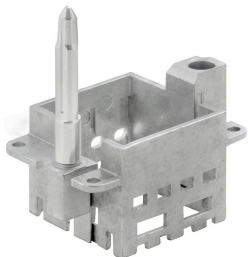


**General ordering data**

|            |                            |         |  |
|------------|----------------------------|---------|--|
| Type       | HDC MFGS 6B BA             | Version |  |
| Order No.  | <a href="#">2736900000</a> | Frame   |  |
| GTIN (EAN) | 4050118822267              |         |  |
| Qty.       | 1 ST                       |         |  |

|            |                            |         |  |
|------------|----------------------------|---------|--|
| Type       | HDC MFGS 10B CA            | Version |  |
| Order No.  | <a href="#">2736920000</a> | Frame   |  |
| GTIN (EAN) | 4050118822281              |         |  |
| Qty.       | 1 ST                       |         |  |

**With long guiding pin**



**General ordering data**

|            |                            |         |  |
|------------|----------------------------|---------|--|
| Type       | HDC MFGL 6B BA             | Version |  |
| Order No.  | <a href="#">2736980000</a> | Frame   |  |
| GTIN (EAN) | 4050118822908              |         |  |
| Qty.       | 1 ST                       |         |  |

## HDC MHX 2 MAS

**Weidmüller Interface GmbH & Co. KG**  
 Klingenbergstraße 26  
 D-32758 Detmold  
 Germany

## Counterpart

www.weidmueller.com

### Electrical modules



#### Flexible

The four module sizes make for individual plug solutions that save a huge amount of space. The smaller pitch translates into an optimised design too.

### General ordering data

|            |                            |         |  |
|------------|----------------------------|---------|--|
| Type       | HDC MHX 2 FAS              | Version |  |
| Order No.  | <a href="#">2748330000</a> |         | Power module, 690 V, 40 A, Number of poles: 2, Axial screw connection, Female, Required plug-in slots: 1 |
| GTIN (EAN) | 4050118891102              |         |  |
| Qty.       | 2 ST                       |         |  |
| Type       | HDC MHX 2 FC               | Version |  |
| Order No.  | <a href="#">2748350000</a> |         | Power module, 830 V, 40 A, Number of poles: 2, Crimp connection, Female, Required plug-in slots: 1       |
| GTIN (EAN) | 4050118890983              |         |  |
| Qty.       | 5 ST                       |         |  |