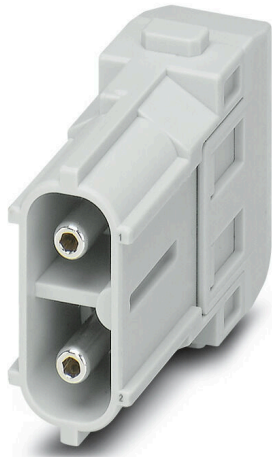


HDC MHX 2 MAS

Weidmüller Interface GmbH & Co. KG
Klingenbergstraße 26
D-32758 Detmold
Germany

www.weidmueller.com

**Flexible**

The four module sizes make for individual plug solutions that save a huge amount of space. The smaller pitch translates into an optimised design too.

General ordering data

Version	Power module, 690 V, 40 A, Number of poles: 2, Axial screw connection, Male, Required plug-in slots: 1
Order No.	2748320000
Type	HDC MHX 2 MAS
GTIN (EAN)	4050118891027
Qty.	2 items

HDC MHX 2 MAS

Weidmüller Interface GmbH & Co. KG
Klingenbergstraße 26
D-32758 Detmold
Germany

www.weidmueller.com

Technical data

Approvals

Approvals



ROHS	Conform
UL File Number Search	UL Website
Certificate No. (UR)	E92202
Certificate No. (cURus)	E310075

Dimensions and weights

Depth	34 mm	Depth (inches)	1.3386 inch
Height	34.7 mm	Height (inches)	1.3661 inch
Width	34.2 mm	Width (inches)	1.3465 inch
Net weight	26 g		

Temperatures

Limit temperature -40 °C ... 125 °C

Environmental Product Compliance

RoHS Compliance Status	Compliant with exemption
RoHS Exemption (if applicable/known)	6c
REACH SVHC	Lead 7439-92-1
SCIP	fa505316-3e43-4ad0-930c-360dfdbe182a

General data

Number of poles	2	UL 94 flammability rating	V-0
Plugging cycles	≥ 500	Type	Male
Surge voltage category	III	Pollution severity	3
Basic material	Polycarbonate	Series	ModuPlug
Rated voltage (DIN EN 61984)	690 V	Rated voltage according to UL/CSA	600 V
Rated impulse voltage (DIN EN 61984)	8 kV	Rated current (DIN EN 61984)	40 A
Required plug-in slots	1		

PE connection data

Connection type PE Screw connection via module frame

Version

Type of connection	Axial screw connection	Conductor cross-section, max.	10 mm ²
Conductor cross-section, min.	2.5 mm ²		

Power contact

Tightening torque, power contact, max.	2 Nm	
Tightening torque, power contact, min.	1.5 Nm	
Clamping range, power contact, max.	10 mm ²	
Clamping range, power contact, min.	2.5 mm ²	
Tightening torque, max. according to the conductor cross-section	Conductor cross-section, min.	2.5 mm ²
	Conductor cross-section, max.	4 mm ²

HDC MHX 2 MAS

Weidmüller Interface GmbH & Co. KG
 Klingenbergstraße 26
 D-32758 Detmold
 Germany

www.weidmueller.com

Technical data

	Tightening torque, max.	1.5 Nm
	Conductor cross-section, min.	6 mm ²
	Conductor cross-section, max.	8 mm ²
	Tightening torque, max.	2 Nm
Stripping length according to the cable diameter	Cable diameter, max.	4.8 mm
	Stripping length	9.00 mm
	Cable diameter, max.	6.5 mm
	Stripping length	11.00 mm
Hexagon socket	2 mm	

Classifications

ETIM 8.0	EC000438	ETIM 9.0	EC000438
ETIM 10.0	EC000438	ECLASS 14.0	27-44-02-17
ECLASS 15.0	27-44-02-17		

HDC MHX 2 MAS

Weidmüller Interface GmbH & Co. KG
Klingenbergstraße 26
D-32758 Detmold
Germany

Drawings

www.weidmueller.com

