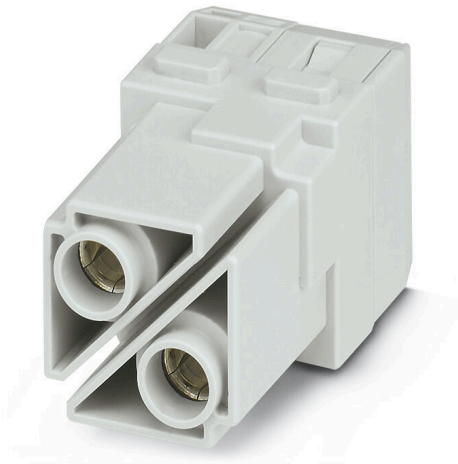


**HDC MHP 100 FAS**

**Weidmüller Interface GmbH & Co. KG**  
Klingenbergstraße 26  
D-32758 Detmold  
Germany

www.weidmueller.com

**Flexible**

The four module sizes make for individual plug solutions that save a huge amount of space. The smaller pitch translates into an optimised design too.

**General ordering data**

Version	Power module, 1000 V, 100 A, Number of poles: 2, Axial screw connection, Female, Required plug-in slots: 2
Order No.	<a href="#">2748290000</a>
Type	HDC MHP 100 FAS
GTIN (EAN)	4050118891126
Qty.	2 items

## HDC MHP 100 FAS

Weidmüller Interface GmbH &amp; Co. KG

Klingenbergstraße 26

D-32758 Detmold

Germany

www.weidmueller.com

## Technical data

## Approvals

Approvals



ROHS Conform

UL File Number Search [UL Website](#)

Certificate No. (UR) E92202

## Dimensions and weights

Depth	34 mm	Depth (inches)	1.3386 inch
Height	49 mm	Height (inches)	1.9291 inch
Width	34.2 mm	Width (inches)	1.3465 inch
Net weight	24.95 g		

## Temperatures

Limit temperature -40 °C ... 125 °C

## Environmental Product Compliance

RoHS Compliance Status	Compliant with exemption
RoHS Exemption (if applicable/known)	6c
REACH SVHC	Lead 7439-92-1
SCIP	fa505316-3e43-4ad0-930c-360dfdbe182a

## General data

Number of poles	2	UL 94 flammability rating	V-0
Insulating material	Polycarbonate	Plugging cycles	≥ 500
Type	Female	Surge voltage category	III
Pollution severity	3	Basic material	Polycarbonate
Series	ModuPlug	Rated voltage (DIN EN 61984)	1000 V
Rated voltage according to UL/CSA	600 V	Rated impulse voltage (DIN EN 61984)	8 kV
Rated current (DIN EN 61984)	100 A	Required plug-in slots	2

## Version

Wire connection cross section AWG, max.	AWG 2	Type of connection	Axial screw connection
Wire connection cross section AWG, min.	AWG 8	Conductor cross-section, max.	35 mm <sup>2</sup>
Conductor cross-section, min.	10 mm <sup>2</sup>		

## Power contact

Clamping range, power contact, max.	35 mm <sup>2</sup>	
Clamping range, power contact, min.	10 mm <sup>2</sup>	
Tightening torque, max. according to the conductor cross-section	Conductor cross-section, min.	10 mm <sup>2</sup>
	Conductor cross-section, max.	16 mm <sup>2</sup>
	Tightening torque, max.	6 Nm
	Conductor cross-section, max.	25 mm <sup>2</sup>
	Tightening torque, max.	7 Nm
	Conductor cross-section, max.	35 mm <sup>2</sup>
	Tightening torque, max.	8 Nm

**HDC MHP 100 FAS**

**Weidmüller Interface GmbH & Co. KG**  
Klingenbergstraße 26  
D-32758 Detmold  
Germany

[www.weidmueller.com](http://www.weidmueller.com)

**Technical data**

Stripping length according to the cable diameter	Cable diameter, max.	9 mm
	Stripping length	14.00 mm
	Cable diameter, max.	11.5 mm
	Stripping length	16.00 mm

**Classifications**

ETIM 8.0	EC000438	ETIM 9.0	EC000438
ETIM 10.0	EC000438	ECLASS 14.0	27-44-02-17
ECLASS 15.0	27-44-02-17		

HDC MHP 100 FAS

Weidmüller Interface GmbH & Co. KG  
Klingenbergstraße 26  
D-32758 Detmold  
Germany

Drawings

www.weidmueller.com

