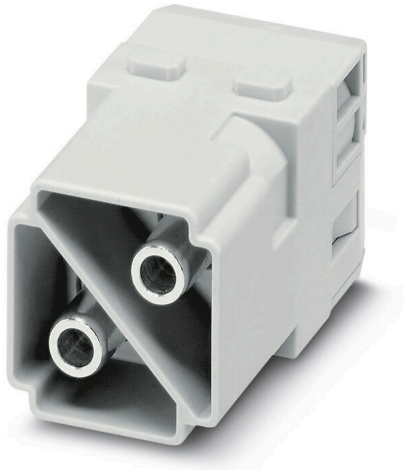


HDC MHP 100 MAS

Weidmüller Interface GmbH & Co. KG
Klingenbergstraße 26
D-32758 Detmold
Germany

www.weidmueller.com

**Flexible**

The four module sizes make for individual plug solutions that save a huge amount of space. The smaller pitch translates into an optimised design too.

General ordering data

Version	Power module, 1000 V, 100 A, Number of poles: 2, Axial screw connection, Male, Required plug-in slots: 2
Order No.	2748280000
Type	HDC MHP 100 MAS
GTIN (EAN)	4050118891034
Qty.	2 items

HDC MHP 100 MAS

Weidmüller Interface GmbH & Co. KG
Klingenbergstraße 26
D-32758 Detmold
Germany

www.weidmueller.com

Technical data

Approvals

Approvals



ROHS Conform

UL File Number Search [UL Website](#)

Certificate No. (UR) E92202

Dimensions and weights

Depth	34 mm	Depth (inches)	1.3386 inch
Height	49 mm	Height (inches)	1.9291 inch
Width	34.2 mm	Width (inches)	1.3465 inch
Net weight	24.9 g		

Temperatures

Limit temperature -40 °C ... 125 °C

Environmental Product Compliance

RoHS Compliance Status	Compliant with exemption
RoHS Exemption (if applicable/known)	6c
REACH SVHC	Lead 7439-92-1
SCIP	fa505316-3e43-4ad0-930c-360dfdbe182a

General data

Number of poles	2	UL 94 flammability rating	V-0
Insulating material	Polycarbonate	Plugging cycles	≥ 500
Type	Male	Surge voltage category	III
Pollution severity	3	Basic material	Polycarbonate
Series	ModuPlug	Rated voltage (DIN EN 61984)	1000 V
Rated voltage according to UL/CSA	600 V	Rated impulse voltage (DIN EN 61984)	8 kV
Rated current (DIN EN 61984)	100 A	Required plug-in slots	2

Version

Wire connection cross section AWG, max.	AWG 2	Type of connection	Axial screw connection
Wire connection cross section AWG, min.	AWG 8	Conductor cross-section, max.	35 mm ²
Conductor cross-section, min.	10 mm ²		

Power contact

Clamping range, power contact, max.	35 mm ²	
Clamping range, power contact, min.	10 mm ²	
Tightening torque, max. according to the conductor cross-section	Conductor cross-section, min.	10 mm ²
	Conductor cross-section, max.	16 mm ²
	Tightening torque, max.	6 Nm
	Conductor cross-section, max.	25 mm ²
	Tightening torque, max.	7 Nm
	Conductor cross-section, max.	35 mm ²
	Tightening torque, max.	8 Nm

HDC MHP 100 MAS

Weidmüller Interface GmbH & Co. KG
Klingenbergstraße 26
D-32758 Detmold
Germany

www.weidmueller.com

Technical data

Stripping length according to the cable diameter	Cable diameter, max.	9 mm
	Stripping length	14.00 mm
	Cable diameter, max.	11.5 mm
	Stripping length	16.00 mm

Classifications

ETIM 8.0	EC000438	ETIM 9.0	EC000438
ETIM 10.0	EC000438	ECLASS 14.0	27-44-02-17
ECLASS 15.0	27-44-02-17		

HDC MHP 100 MAS

Weidmüller Interface GmbH & Co. KG
Klingenbergstraße 26
D-32758 Detmold
Germany

Drawings

www.weidmueller.com

