

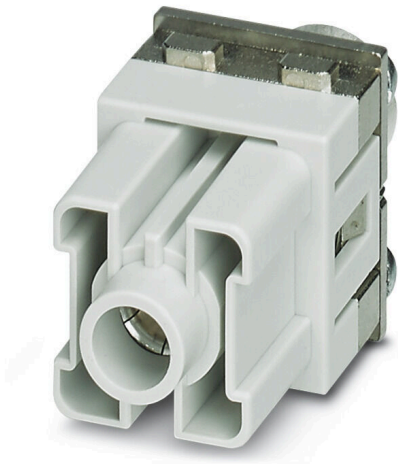
**HDC MHP 200 PE FAS****Weidmüller Interface GmbH & Co. KG**

Klingenbergstraße 26

D-32758 Detmold

Germany

www.weidmueller.com

**Flexible**

The four module sizes make for individual plug solutions that save a huge amount of space. The smaller pitch translates into an optimised design too.

**General ordering data**

Version	Power module, 1000 V, 200 A, Number of poles: 1, Axial screw connection, Female, Required plug-in slots: 2
Order No.	<a href="#">2748270000</a>
Type	HDC MHP 200 PE FAS
GTIN (EAN)	4050118891041
Qty.	2 items

**HDC MHP 200 PE FAS**

**Weidmüller Interface GmbH & Co. KG**  
 Klingenbergstraße 26  
 D-32758 Detmold  
 Germany

www.weidmueller.com

**Technical data**

**Approvals**

Approvals



ROHS	Conform
UL File Number Search	<a href="#">UL Website</a>
Certificate No. (UR)	E92202
Certificate No. (cURus)	E310075

**Dimensions and weights**

Depth	34.2 mm	Depth (inches)	1.3465 inch
Height	60 mm	Height (inches)	2.3622 inch
Width	34.2 mm	Width (inches)	1.3465 inch
Net weight	13.8 g		

**Temperatures**

Limit temperature	-40 °C ... 125 °C
-------------------	-------------------

**Environmental Product Compliance**

RoHS Compliance Status	Compliant with exemption
RoHS Exemption (if applicable/known)	6a, 6c
REACH SVHC	Lead 7439-92-1
SCIP	fa505316-3e43-4ad0-930c-360dfdbe182a

**General data**

Number of poles	1	UL 94 flammability rating	V-0
Plugging cycles	≥ 500	Type	Female
Pollution severity	3	Basic material	Polycarbonate
Rated voltage (DIN EN 61984)	1000 V	Rated impulse voltage (DIN EN 61984)	8 kV
Rated current (DIN EN 61984)	200 A	Required plug-in slots	2

**Version**

Type of connection	Axial screw connection	Conductor cross-section, max.	70 mm <sup>2</sup>
Conductor cross-section, min.	6 mm <sup>2</sup>		

**Power contact**

Clamping range, power contact, max.	70 mm <sup>2</sup>	
Clamping range, power contact, min.	6 mm <sup>2</sup>	
Tightening torque, max. according to the conductor cross-section	Conductor cross-section, min.	25 mm <sup>2</sup>
	Conductor cross-section, max.	70 mm <sup>2</sup>
	Tightening torque, max.	8 Nm
	Conductor cross-section, max.	50 mm <sup>2</sup>
	Tightening torque, max.	9 Nm
	Conductor cross-section, max.	70 mm <sup>2</sup>
Stripping length according to the cable diameter	Tightening torque, max.	10 Nm
	Cable diameter, max.	12 mm
	Stripping length	15.00 mm
	Cable diameter, max.	16 mm

**HDC MHP 200 PE FAS**

**Weidmüller Interface GmbH & Co. KG**  
Klingenbergstraße 26  
D-32758 Detmold  
Germany

[www.weidmueller.com](http://www.weidmueller.com)

**Technical data**

Stripping length 19.00 mm

**Classifications**

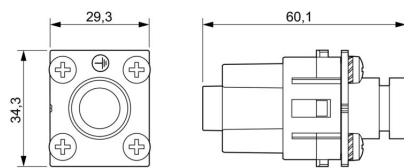
ETIM 8.0	EC000438	ETIM 9.0	EC000438
ETIM 10.0	EC000438	ECLASS 14.0	27-44-02-17
ECLASS 15.0	27-44-02-17		

**HDC MHP 200 PE FAS**

**Weidmüller Interface GmbH & Co. KG**  
Klingenbergstraße 26  
D-32758 Detmold  
Germany

**Drawings**

[www.weidmueller.com](http://www.weidmueller.com)



## HDC MHP 200 PE FAS

**Weidmüller Interface GmbH & Co. KG**  
 Klingenbergstraße 26  
 D-32758 Detmold  
 Germany

## Accessories

www.weidmueller.com

### Standard



### General ordering data

Type	HDC MF 6B AB	Version	
Order No.	<a href="#">1428920000</a>	Frame	
GTIN (EAN)	4050118233414		
Qty.	1 ST		
Type	HDC MF 6B BA	Version	
Order No.	<a href="#">1428940000</a>	Frame	
GTIN (EAN)	4050118233353		
Qty.	1 ST		
Type	HDC MF 10B AC	Version	
Order No.	<a href="#">1428960000</a>	Frame	
GTIN (EAN)	4050118233223		
Qty.	1 ST		
Type	HDC MF 10B CA	Version	
Order No.	<a href="#">1428980000</a>	Frame	
GTIN (EAN)	4050118233278		
Qty.	1 ST		
Type	HDC MF 16B AD	Version	
Order No.	<a href="#">1429010000</a>	Frame	
GTIN (EAN)	4050118233315		
Qty.	1 ST		
Type	HDC MF 16B DA	Version	
Order No.	<a href="#">1429030000</a>	Frame	
GTIN (EAN)	4050118233407		
Qty.	1 ST		
Type	HDC MF 24B AF	Version	
Order No.	<a href="#">1429050000</a>	Frame	
GTIN (EAN)	4050118233285		
Qty.	1 ST		
Type	HDC MF 24B FA	Version	
Order No.	<a href="#">1429070000</a>	Frame	
GTIN (EAN)	4050118233520		
Qty.	1 ST		

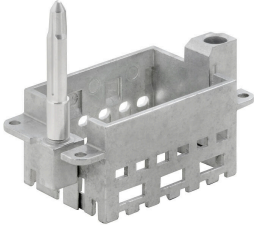
## HDC MHP 200 PE FAS

**Weidmüller Interface GmbH & Co. KG**  
 Klingenbergstraße 26  
 D-32758 Detmold  
 Germany

www.weidmueller.com

## Accessories

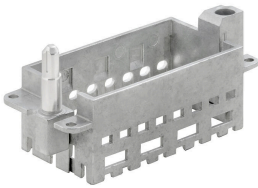
### With long guiding pin



#### General ordering data

Type	HDC MFGL 10B AC	Version	
Order No.	<a href="#">2736990000</a>	Frame	
GTIN (EAN)	4050118823042		
Qty.	1 ST		
Type	HDC MFGL 6B AB	Version	
Order No.	<a href="#">2736970000</a>	Frame	
GTIN (EAN)	4050118823035		
Qty.	1 ST		
Type	HDC MFGL 24B FA	Version	
Order No.	<a href="#">2737040000</a>	Frame	
GTIN (EAN)	4050118823097		
Qty.	1 ST		

### With short guiding pin



#### General ordering data

Type	HDC MFGS 16B DA	Version	
Order No.	<a href="#">2736940000</a>	Frame	
GTIN (EAN)	4050118823004		
Qty.	1 ST		
Type	HDC MFGS 24B AF	Version	
Order No.	<a href="#">2736950000</a>	Frame	
GTIN (EAN)	4050118823011		
Qty.	1 ST		

## HDC MHP 200 PE FAS

**Weidmüller Interface GmbH & Co. KG**  
Klingenbergstraße 26  
D-32758 Detmold  
Germany

[www.weidmueller.com](http://www.weidmueller.com)

## Accessories

### With long guiding pin

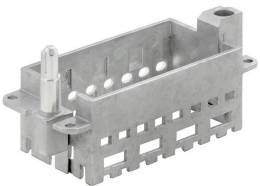


#### General ordering data

Type	HDC MFGL 16B DA
Order No.	<a href="#">2737020000</a>
GTIN (EAN)	4050118823073
Qty.	1 ST

Version	
Frame	

### With short guiding pin

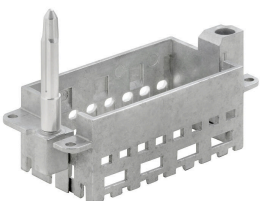


#### General ordering data

Type	HDC MFGL 16B DA
Order No.	<a href="#">2736930000</a>
GTIN (EAN)	4050118822298
Qty.	1 ST

Version	
Frame	

### With long guiding pin



#### General ordering data

Type	HDC MFGL 16B AD
Order No.	<a href="#">2737010000</a>
GTIN (EAN)	4050118823066
Qty.	1 ST

Version	
Frame	

## HDC MHP 200 PE FAS

**Weidmüller Interface GmbH & Co. KG**  
 Klingenbergstraße 26  
 D-32758 Detmold  
 Germany

## Accessories

www.weidmueller.com

### With short guiding pin



#### General ordering data

Type	HDC MFGS 6B AB	Version	
Order No.	<a href="#">2736890000</a>	Frame	
GTIN (EAN)	4050118822250		
Qty.	1 ST		
Type	HDC MFGS 24B FA	Version	
Order No.	<a href="#">2736960000</a>	Frame	
GTIN (EAN)	4050118823028		
Qty.	1 ST		
Type	HDC MFGS 10B AC	Version	
Order No.	<a href="#">2736910000</a>	Frame	
GTIN (EAN)	4050118822274		
Qty.	1 ST		

### With long guiding pin



#### General ordering data

Type	HDC MFGL 24B AF	Version	
Order No.	<a href="#">2737030000</a>	Frame	
GTIN (EAN)	4050118823080		
Qty.	1 ST		
Type	HDC MFGL 10B CA	Version	
Order No.	<a href="#">2737000000</a>	Frame	
GTIN (EAN)	4050118823059		
Qty.	1 ST		

## HDC MHP 200 PE FAS

**Weidmüller Interface GmbH & Co. KG**  
 Klingenbergstraße 26  
 D-32758 Detmold  
 Germany

www.weidmueller.com

## Accessories

### With short guiding pin

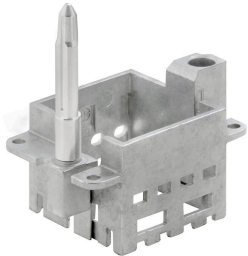


#### General ordering data

Type	HDC MFGS 6B BA	Version	
Order No.	<a href="#">2736900000</a>	Frame	
GTIN (EAN)	4050118822267		
Qty.	1 ST		

Type	HDC MFGS 10B CA	Version	
Order No.	<a href="#">2736920000</a>	Frame	
GTIN (EAN)	4050118822281		
Qty.	1 ST		

### With long guiding pin



#### General ordering data

Type	HDC MFGL 6B BA	Version	
Order No.	<a href="#">2736980000</a>	Frame	
GTIN (EAN)	4050118822908		
Qty.	1 ST		

## HDC MHP 200 PE FAS

**Weidmüller Interface GmbH & Co. KG**  
Klingenbergstraße 26  
D-32758 Detmold  
Germany

[www.weidmueller.com](http://www.weidmueller.com)

## Counterpart

### Electrical modules



#### Flexible

The four module sizes make for individual plug solutions that save a huge amount of space. The smaller pitch translates into an optimised design too.

### General ordering data

Type	HDC MHP 200 PE MAS	Version	
Order No.	<a href="#">2748260000</a>	Power module, 1000 V, 200 A, Number of poles: 1, Axial screw connection, Male, Required plug-in slots: 2	
GTIN (EAN)	4050118890891		
Qty.	2 ST		