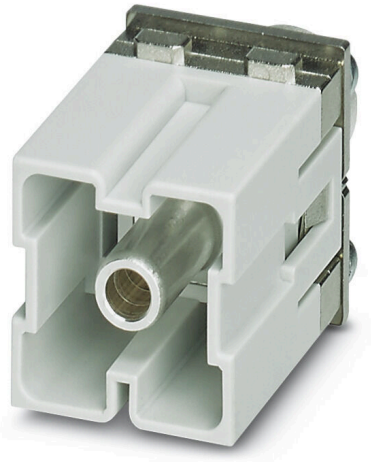


**HDC MHP 200 PE MAS**

**Weidmüller Interface GmbH & Co. KG**  
Klingenbergstraße 26  
D-32758 Detmold  
Germany

www.weidmueller.com

**Flexible**

The four module sizes make for individual plug solutions that save a huge amount of space. The smaller pitch translates into an optimised design too.

**General ordering data**

Version	Power module, 1000 V, 200 A, Number of poles: 1, Axial screw connection, Male, Required plug-in slots: 2
Order No.	<a href="#">2748260000</a>
Type	HDC MHP 200 PE MAS
GTIN (EAN)	405011889089 1
Qty.	2 items

**HDC MHP 200 PE MAS**

**Weidmüller Interface GmbH & Co. KG**  
 Klingenbergstraße 26  
 D-32758 Detmold  
 Germany

www.weidmueller.com

**Technical data**

**Approvals**

Approvals



ROHS	Conform
UL File Number Search	<a href="#">UL Website</a>
Certificate No. (UR)	E92202
Certificate No. (cURus)	E310075

**Dimensions and weights**

Depth	34.2 mm	Depth (inches)	1.3465 inch
Height	60 mm	Height (inches)	2.3622 inch
Width	34.2 mm	Width (inches)	1.3465 inch
Net weight	89.5 g		

**Temperatures**

Limit temperature	-40 °C ... 125 °C
-------------------	-------------------

**Environmental Product Compliance**

RoHS Compliance Status	Compliant with exemption
RoHS Exemption (if applicable/known)	6c
REACH SVHC	Lead 7439-92-1
SCIP	fa505316-3e43-4ad0-930c-360dfdbe182a

**General data**

Number of poles	1	UL 94 flammability rating	V-0
Plugging cycles	≥ 500	Type	Male
Pollution severity	3	Basic material	Polycarbonate
Rated voltage (DIN EN 61984)	1000 V	Rated impulse voltage (DIN EN 61984)	8 kV
Rated current (DIN EN 61984)	200 A	Required plug-in slots	2

**Version**

Type of connection	Axial screw connection	Conductor cross-section, max.	70 mm <sup>2</sup>
Conductor cross-section, min.	25 mm <sup>2</sup>		

**Power contact**

Clamping range, power contact, max.	70 mm <sup>2</sup>	
Clamping range, power contact, min.	25 mm <sup>2</sup>	
Tightening torque, max. according to the conductor cross-section	Conductor cross-section, min.	25 mm <sup>2</sup>
	Conductor cross-section, max.	70 mm <sup>2</sup>
	Tightening torque, max.	8 Nm
	Conductor cross-section, max.	50 mm <sup>2</sup>
	Tightening torque, max.	9 Nm
	Conductor cross-section, max.	70 mm <sup>2</sup>
Stripping length according to the cable diameter	Tightening torque, max.	10 Nm
	Cable diameter, max.	12 mm
	Stripping length	15.00 mm
	Cable diameter, max.	16 mm

**HDC MHP 200 PE MAS**

**Weidmüller Interface GmbH & Co. KG**  
Klingenbergstraße 26  
D-32758 Detmold  
Germany

[www.weidmueller.com](http://www.weidmueller.com)

**Technical data**

Stripping length 19.00 mm

**Classifications**

ETIM 8.0	EC000438	ETIM 9.0	EC000438
ETIM 10.0	EC000438	ECLASS 14.0	27-44-02-17
ECLASS 15.0	27-44-02-17		

**HDC MHP 200 PE MAS**

**Weidmüller Interface GmbH & Co. KG**  
Klingenbergstraße 26  
D-32758 Detmold  
Germany

**Drawings**

[www.weidmueller.com](http://www.weidmueller.com)

