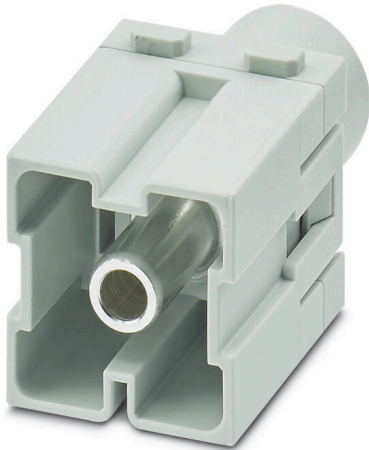


**HDC MHP 200 MAS**

**Weidmüller Interface GmbH & Co. KG**  
Klingenbergstraße 26  
D-32758 Detmold  
Germany

www.weidmueller.com

**Flexible**

The four module sizes make for individual plug solutions that save a huge amount of space. The smaller pitch translates into an optimised design too.

**General ordering data**

Version	Power module, 1000 V, 200 A, Number of poles: 1, Axial screw connection, Male, Required plug-in slots: 2
Order No.	<a href="#">2748240000</a>
Type	HDC MHP 200 MAS
GTIN (EAN)	4050118891058
Qty.	2 items

## HDC MHP 200 MAS

Weidmüller Interface GmbH & Co. KG  
Klingenbergstraße 26  
D-32758 Detmold  
Germany

www.weidmueller.com

## Technical data

## Approvals

Approvals



ROHS	Conform
UL File Number Search	<a href="#">UL Website</a>
Certificate No. (UR)	E92202
Certificate No. (cURus)	E310075

## Dimensions and weights

Depth	34.2 mm	Depth (inches)	1.3465 inch
Height	60 mm	Height (inches)	2.3622 inch
Width	34.2 mm	Width (inches)	1.3465 inch
Net weight	61.4 g		

## Temperatures

Limit temperature -40 °C ... 125 °C

## Environmental Product Compliance

RoHS Compliance Status	Compliant with exemption
RoHS Exemption (if applicable/known)	6c
REACH SVHC	Lead 7439-92-1
SCIP	fa505316-3e43-4ad0-930c-360dfdbe182a

## General data

Number of poles	1	UL 94 flammability rating	V-0
Plugging cycles	≥ 500	Type	Male
Surge voltage category	III	Pollution severity	3
Basic material	Polycarbonate	Series	ModuPlug
Rated voltage (DIN EN 61984)	1000 V	Rated voltage according to UL/CSA	600 V
Rated impulse voltage (DIN EN 61984)	8 kV	Rated current (DIN EN 61984)	200 A
Required plug-in slots	2		

## PE connection data

Connection type PE Screw connection via module frame

## Version

Type of connection	Axial screw connection	Conductor cross-section, max.	70 mm <sup>2</sup>
Conductor cross-section, min.	25 mm <sup>2</sup>		

## Power contact

Clamping range, power contact, max.	70 mm <sup>2</sup>	
Clamping range, power contact, min.	25 mm <sup>2</sup>	
Tightening torque, max. according to the conductor cross-section	Conductor cross-section, min.	25 mm <sup>2</sup>
	Conductor cross-section, max.	35 mm <sup>2</sup>
	Tightening torque, max.	8 Nm
	Conductor cross-section, max.	50 mm <sup>2</sup>

## HDC MHP 200 MAS

**Weidmüller Interface GmbH & Co. KG**  
 Klingenbergstraße 26  
 D-32758 Detmold  
 Germany

[www.weidmueller.com](http://www.weidmueller.com)

## Technical data

	Tightening torque, max.	9 Nm
	Conductor cross-section, max.	70 mm <sup>2</sup>
	Tightening torque, max.	10 Nm
Stripping length according to the cable diameter	Cable diameter, max.	12 mm
	Stripping length	15.00 mm
	Cable diameter, max.	16 mm
	Stripping length	19.00 mm

## Classifications

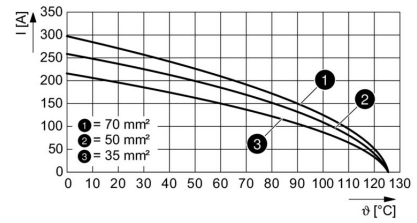
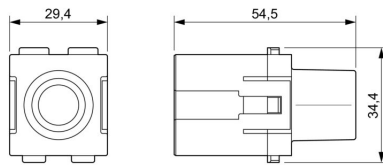
ETIM 8.0	EC000438	ETIM 9.0	EC000438
ETIM 10.0	EC000438	ECLASS 14.0	27-44-02-17
ECLASS 15.0	27-44-02-17		

**HDC MHP 200 MAS**

**Weidmüller Interface GmbH & Co. KG**  
Klingenbergstraße 26  
D-32758 Detmold  
Germany

**Drawings**

[www.weidmueller.com](http://www.weidmueller.com)



## HDC MHP 200 MAS

**Weidmüller Interface GmbH & Co. KG**  
 Klingenbergstraße 26  
 D-32758 Detmold  
 Germany

www.weidmueller.com

## Accessories

## Standard



## Simple

The innovative sliding frame has two defined lock-in positions for opening and closing. This enables simple and tool-free module assembly.

## General ordering data

Type	HDC MF 6B AB	Version
Order No.	<a href="#">1428920000</a>	Frame
GTIN (EAN)	4050118233414	
Qty.	1 ST	
Type	HDC MF 6B BA	Version
Order No.	<a href="#">1428940000</a>	Frame
GTIN (EAN)	4050118233353	
Qty.	1 ST	
Type	HDC MF 10B AC	Version
Order No.	<a href="#">1428960000</a>	Frame
GTIN (EAN)	4050118233223	
Qty.	1 ST	
Type	HDC MF 10B CA	Version
Order No.	<a href="#">1428980000</a>	Frame
GTIN (EAN)	4050118233278	
Qty.	1 ST	
Type	HDC MF 16B AD	Version
Order No.	<a href="#">1429010000</a>	Frame
GTIN (EAN)	4050118233315	
Qty.	1 ST	
Type	HDC MF 16B DA	Version
Order No.	<a href="#">1429030000</a>	Frame
GTIN (EAN)	4050118233407	
Qty.	1 ST	
Type	HDC MF 24B AF	Version
Order No.	<a href="#">1429050000</a>	Frame
GTIN (EAN)	4050118233285	
Qty.	1 ST	
Type	HDC MF 24B FA	Version
Order No.	<a href="#">1429070000</a>	Frame
GTIN (EAN)	4050118233520	
Qty.	1 ST	

## HDC MHP 200 MAS

**Weidmüller Interface GmbH & Co. KG**  
 Klingenbergstraße 26  
 D-32758 Detmold  
 Germany

www.weidmueller.com

## Accessories

## With long guiding pin



## Simple

The innovative sliding frame has two defined lock-in positions for opening and closing. This enables simple and tool-free module assembly.

## General ordering data

Type	HDC MFGL 10B AC	Version	
Order No.	<a href="#">2736990000</a>	Frame	
GTIN (EAN)	4050118823042		
Qty.	1 ST		
Type	HDC MFGL 6B AB	Version	
Order No.	<a href="#">2736970000</a>	Frame	
GTIN (EAN)	4050118823035		
Qty.	1 ST		
Type	HDC MFGL 24B FA	Version	
Order No.	<a href="#">2737040000</a>	Frame	
GTIN (EAN)	4050118823097		
Qty.	1 ST		

## With short guiding pin



## Simple

The innovative sliding frame has two defined lock-in positions for opening and closing. This enables simple and tool-free module assembly.

## General ordering data

Type	HDC MFGS 16B DA	Version	
Order No.	<a href="#">2736940000</a>	Frame	
GTIN (EAN)	4050118823004		
Qty.	1 ST		
Type	HDC MFGS 24B AF	Version	
Order No.	<a href="#">2736950000</a>	Frame	
GTIN (EAN)	4050118823011		
Qty.	1 ST		

## HDC MHP 200 MAS

**Weidmüller Interface GmbH & Co. KG**  
 Klingenbergstraße 26  
 D-32758 Detmold  
 Germany

[www.weidmueller.com](http://www.weidmueller.com)

## Accessories

## With long guiding pin



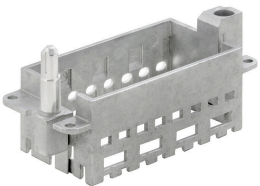
## Simple

The innovative sliding frame has two defined lock-in positions for opening and closing. This enables simple and tool-free module assembly.

## General ordering data

Type	HDC MFGL 16B DA	Version	
Order No.	<a href="#">2737020000</a>	Frame	
GTIN (EAN)	4050118823073		
Qty.	1 ST		

## With short guiding pin



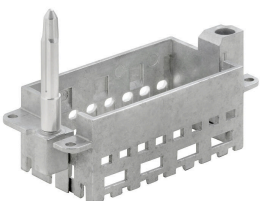
## Simple

The innovative sliding frame has two defined lock-in positions for opening and closing. This enables simple and tool-free module assembly.

## General ordering data

Type	HDC MFGL 16B AD	Version	
Order No.	<a href="#">2736930000</a>	Frame	
GTIN (EAN)	4050118822298		
Qty.	1 ST		

## With long guiding pin



## Simple

The innovative sliding frame has two defined lock-in positions for opening and closing. This enables simple and tool-free module assembly.

## General ordering data

Type	HDC MFGL 16B AD	Version	
Order No.	<a href="#">2737010000</a>	Frame	
GTIN (EAN)	4050118823066		
Qty.	1 ST		

## HDC MHP 200 MAS

**Weidmüller Interface GmbH & Co. KG**  
 Klingenbergstraße 26  
 D-32758 Detmold  
 Germany

[www.weidmueller.com](http://www.weidmueller.com)

## Accessories

## With short guiding pin



## Simple

The innovative sliding frame has two defined lock-in positions for opening and closing. This enables simple and tool-free module assembly.

## General ordering data

Type	HDC MFGS 6B AB	Version
Order No.	<a href="#">2736890000</a>	Frame
GTIN (EAN)	4050118822250	
Qty.	1 ST	
Type	HDC MFGS 24B FA	Version
Order No.	<a href="#">2736960000</a>	Frame
GTIN (EAN)	4050118823028	
Qty.	1 ST	
Type	HDC MFGS 10B AC	Version
Order No.	<a href="#">2736910000</a>	Frame
GTIN (EAN)	4050118822274	
Qty.	1 ST	

## With long guiding pin



## Simple

The innovative sliding frame has two defined lock-in positions for opening and closing. This enables simple and tool-free module assembly.

## General ordering data

Type	HDC MFGL 24B AF	Version
Order No.	<a href="#">2737030000</a>	Frame
GTIN (EAN)	4050118823080	
Qty.	1 ST	
Type	HDC MFGL 10B CA	Version
Order No.	<a href="#">2737000000</a>	Frame
GTIN (EAN)	4050118823059	
Qty.	1 ST	

## HDC MHP 200 MAS

**Weidmüller Interface GmbH & Co. KG**  
 Klingenbergstraße 26  
 D-32758 Detmold  
 Germany

www.weidmueller.com

## Accessories

## With short guiding pin



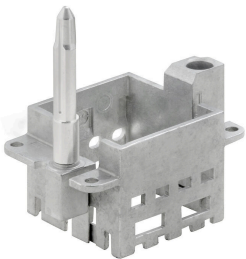
## Simple

The innovative sliding frame has two defined lock-in positions for opening and closing. This enables simple and tool-free module assembly.

## General ordering data

Type	HDC MFGS 6B BA	Version	
Order No.	<a href="#">2736900000</a>	Frame	
GTIN (EAN)	4050118822267		
Qty.	1 ST		
Type	HDC MFGS 10B CA	Version	
Order No.	<a href="#">2736920000</a>	Frame	
GTIN (EAN)	4050118822281		
Qty.	1 ST		

## With long guiding pin



## Simple

The innovative sliding frame has two defined lock-in positions for opening and closing. This enables simple and tool-free module assembly.

## General ordering data

Type	HDC MFGL 6B BA	Version	
Order No.	<a href="#">2736980000</a>	Frame	
GTIN (EAN)	4050118822908		
Qty.	1 ST		

## HDC MHP 200 MAS

**Weidmüller Interface GmbH & Co. KG**  
Klingenbergstraße 26  
D-32758 Detmold  
Germany

[www.weidmueller.com](http://www.weidmueller.com)

## Counterpart

### Electrical modules



#### Flexible

The four module sizes make for individual plug solutions that save a huge amount of space. The smaller pitch translates into an optimised design too.

### General ordering data

Type	HDC MHP 200 FAS	Version	
Order No.	<a href="#">2748250000</a>	Power module, 1000 V, 200 A, Number of poles: 1, Axial screw connection, Female, Required plug-in slots: 2	
GTIN (EAN)	4050118891133		
Qty.	2 ST		