

FFP D1/16H S1 B TY

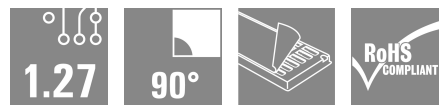
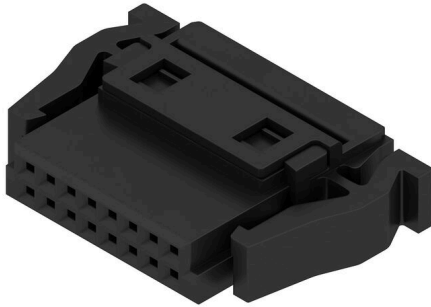
Weidmüller Interface GmbH & Co. KG

Klingenbergstraße 26

D-32758 Detmold

Germany

www.weidmueller.com



OMNIMATE® - Board-to-Board connectors

Flexible engineering of compact devices

The use of future-proof contact systems, as well as the optimisation of manufacturing processes, are increasingly important in the development of efficient industrial devices, especially in the field of Industry 4.0. OMNIMATE® board-to-board connectors feature a 1.27 mm pitch and offer maximum flexibility due to different designs.

- Flexible device design - Industrial suitable density combined with high flexible connection combinations (Mezzanine, Mother-to-Daughter, Extender-card, Cable-to-Board)
- Automation-Ready - Developed for automatic assembly with high precise pin coplanarity and SMT-fixation
- Reliable contact - Up to 500 mating cycles due to industry suitable gold-surface (PdNi-Au)
- Process-Ready - High performance LCP material for reflow soldering
- Scalability - Different heights with high contact overlapping ensure various solutions from 12 – 80 poles.
- Robust miniaturisation - simple and safe connection even possible under unfavorable mating conditions – e.g. inclination or offset.

General ordering data

Version	PCB plug-in connector, female plug, Pitch in mm (P): 1.27 mm, Number of poles: 16, Tray (manual assembly)
Order No.	2747530000
Type	FFP D1/16H S1 B TY
GTIN (EAN)	4050118895957
Qty.	120 items
Product data	IEC: / 1.9 A UL: 150 V / 1 A / AWG 30 sol - AWG 30 sol
Packaging	Tray (manual assembly)

FFP D1/16H S1 B TY

Weidmüller Interface GmbH & Co. KG
Klingenbergstraße 26
D-32758 Detmold
Germany

www.weidmueller.com

Technical data

Approvals

Approvals



ROHS	Conform
UL File Number Search	UL Website
Certificate No. (cURus)	E92202

Dimensions and weights

Depth	5.6 mm	Depth (inches)	0.2205 inch
Height	14.05 mm	Height (inches)	0.5531 inch
Width	17.94 mm	Width (inches)	0.7063 inch
Net weight	1.83 g		

Environmental Product Compliance

RoHS Compliance Status	Compliant without exemption
REACH SVHC	No SVHC above 0.1 wt%

System Parameters

Product family	OMNIMATE Signal - Board-to-Board	Type of connection	Insulation displacement connection (IDC)
Wire connection method	IDC terminal	Pitch in mm (P)	1.27 mm
Pitch in inches (P)	0.050 "	Conductor outlet direction	90°/270°
Number of poles	16	Number of rows	1
Pin series quantity	2	Protection degree	IP20
Volume resistance	<25 mΩ	Plugging cycles	500
Plugging force/pole, max.	0.6 N	Pulling force/pole, max.	0.6 N

Material data

Insulating material	LCP	Colour	black
Colour chart (similar)	RAL 9011	Insulating material group	IIIa
Insulation resistance	$\geq 10^{10} \Omega$	Moisture Level (MSL)	1
UL 94 flammability rating	V-0	Contact base material	Copper alloy
Contact material	Cu-alloy	Contact surface	Ni/Au
Layer structure of plug contact	$\geq 2 \mu\text{m Ni} / \geq 0.4 \mu\text{m PdNi} / \geq 0.05 \mu\text{m Au}$	Storage temperature, min.	-40 °C
Storage temperature, max.	70 °C	Operating temperature, min.	-55 °C
Operating temperature, max.	125 °C		

Conductors suitable for connection

Wire connection cross section AWG, min.	AWG 30/1, 30/7	Wire connection cross section AWG, max.	AWG 30/1, 30/7
Outer diameter of insulation, min.	0.55 mm	Outer diameter of insulation, max.	0.75 mm

Rated data acc. to IEC

Rated current, min. number of poles (Tu=20°C)	1.9 A	Rated current, max. number of poles (Tu=20°C)	2.3 A
Rated current, min. number of poles (Tu=40°C)	2.5 A	Creepage distance, min.	0.4 mm
Clearance, min.	0.4 mm		

FFP D1/16H S1 B TY

Weidmüller Interface GmbH & Co. KG
 Klingenbergstraße 26
 D-32758 Detmold
 Germany

www.weidmueller.com

Technical data

Rated data acc. to UL 1977

Reference to approval values	Specifications are maximum values, details - see approval certificate.	Rated voltage (UL 1977) (obsolete)	150 V
Rated current (UL 1977) (obsolete)	1 A	AWG-conductor, min. (UL 1977)	30 sol
AWG-conductor, max. (UL 1977)	30 sol		

Packing

Packaging	Tray (manual assembly)	VPE length	350.00 mm
VPE width	340.00 mm	VPE height	135.00 mm

Important note

IPC conformity	Conformity: The products are developed, manufactured and delivered according international recognized standards and norms and comply with the assured properties in the data sheet resp. fulfill decorative properties in accordance with IPC-A-610 "Class 2". Further claims on the products can be evaluated on request.
----------------	--

Notes

Classifications

ETIM 8.0	EC002638	ETIM 9.0	EC002638
ETIM 10.0	EC002638	ECLASS 14.0	27-46-02-02
ECLASS 15.0	27-46-02-02		

FFP D1/16H S1 B TY

Weidmüller Interface GmbH & Co. KG
 Klingenbergstraße 26
 D-32758 Detmold
 Germany

www.weidmueller.com

Drawings



With optional strain relief

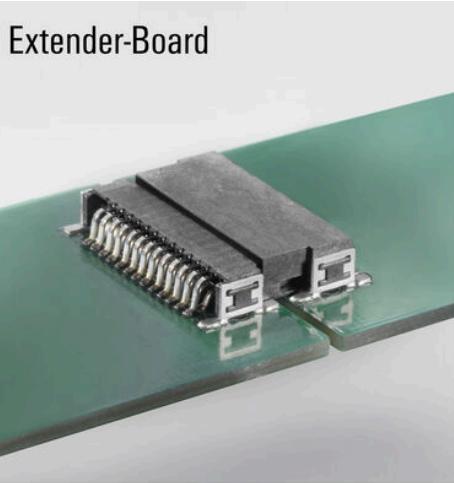
Dimensional drawing

Type	Order no.	No. of poles	A	B	C	D	E
FFP D1/16H S1 B TY	2147520000	12	6,26	15,4	6,37	6,37	15
FFP D1/16H S1 B TY	2147520000	16	8,82	17,84	11,91	10,91	15
FFP D1/16H S1 B TY	2147540000	20	11,42	20,88	14,45	13,45	15
FFP D1/16H S1 B TY	2147560000	26	15,24	28,24	19,26	17,26	15
FFP D1/16H S1 B TY	2147580000	32	19,65	38,1	22,07	21,07	15
FFP D1/16H S1 B TY	2147590000	40	24,13	48,18	27,16	26,16	15
FFP D1/16H S1 B TY	2147590000	50	30,48	60,33	33,5	32,5	15
FFP D1/16H S1 B TY	2147590000	60	41,91	80,88	44,83	43,83	16,2
FFP D1/16H S1 B TY	2147590000	80	49,53	99,06	53,66	52,66	16,2



Detailed drawing





FFP D1/16H S1 B TY

Weidmüller Interface GmbH & Co. KG

Klingenbergstraße 26

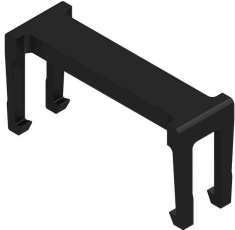
D-32758 Detmold

Germany

www.weidmueller.com

Accessories

FC/FFP - Strain relief (Accessory)



OMNIMATE® - Board-to-Board connectors

Flexible engineering of compact devices

The use of future-proof contact systems, as well as the optimisation of manufacturing processes, are increasingly important in the development of efficient industrial devices, especially in the field of Industry 4.0. OMNIMATE® board-to-board connectors feature a 1.27 mm pitch and offer maximum flexibility due to different designs.

- Flexible device design - Industrial suitable density combined with high flexible connection combinations (Mezzanine, Mother-to-Daughter, Extender-card, Cable-to-Board)
- Automation-Ready - Developed for automatic assembly with high precise pin coplanarity and SMT-fixation
- Reliable contact - Up to 500 mating cycles due to industry suitable gold-surface (PdNi-Au)
- Process-Ready - High performance LCP material for reflow soldering
- Scalability - Different heights with high contact overlapping ensure various solutions from 12 – 80 poles.
- Robust miniaturisation - simple and safe connection even possible under unfavorable mating conditions – e.g. inclination or offset.

General ordering data

Type	FC/FFP ZE/16 B BX	Version	
Order No.	2852990000	PCB plug-in connector, Accessories, Pitch in mm (P): 1.27 mm,	
GTIN (EAN)	4064675475323	Number of poles: 16, Box	
Qty.	100 ST		

FFP D1/16H S1 B TY

Weidmüller Interface GmbH & Co. KG

Klingenbergstraße 26

D-32758 Detmold

Germany

www.weidmueller.com

Counterpart

FMH - Male header, Board connection



OMNIMATE® - Board-to-Board connectors

Flexible engineering of compact devices

The use of future-proof contact systems, as well as the optimisation of manufacturing processes, are increasingly important in the development of efficient industrial devices, especially in the field of Industry 4.0. OMNIMATE® board-to-board connectors feature a 1.27 mm pitch and offer maximum flexibility due to different designs.

- Flexible device design - Industrial suitable density combined with high flexible connection combinations (Mezzanine, Mother-to-Daughter, Extender-card, Cable-to-Board)
- Automation-Ready - Developed for automatic assembly with high precise pin coplanarity and SMT-fixation
- Reliable contact - Up to 500 mating cycles due to industry suitable gold-surface (PdNi-Au)
- Process-Ready - High performance LCP material for reflow soldering
- Scalability - Different heights with high contact overlapping ensure various solutions from 12 – 80 poles.
- Robust miniaturisation - simple and safe connection even possible under unfavorable mating conditions – e.g. inclination or offset.

General ordering data

Type	FMH S1/16H F1 B RL	Version
Order No.	2747170000	PCB plug-in connector, male header, SMD solder connection, Pitch in
GTIN (EAN)	4064675001454	mm (P): 1.27 mm, Number of poles: 16, 90°, Tape
Qty.	560 ST	

FFP D1/16H S1 B TY

Weidmüller Interface GmbH & Co. KG

Klingenbergstraße 26

D-32758 Detmold

Germany

www.weidmueller.com

Counterpart

FMH1 - Male header, Board connection (stack height 1.75 mm)

OMNIMATE® - Board-to-Board connectors

Flexible engineering of compact devices

The use of future-proof contact systems, as well as the optimisation of manufacturing processes, are increasingly important in the development of efficient industrial devices, especially in the field of Industry 4.0. OMNIMATE® board-to-board connectors feature a 1.27 mm pitch and offer maximum flexibility due to different designs.

- Flexible device design - Industrial suitable density combined with high flexible connection combinations (Mezzanine, Mother-to-Daughter, Extender-card, Cable-to-Board)
- Automation-Ready - Developed for automatic assembly with high precise pin coplanarity and SMT-fixation
- Reliable contact - Up to 500 mating cycles due to industry suitable gold-surface (PdNi-Au)
- Process-Ready - High performance LCP material for reflow soldering
- Scalability - Different heights with high contact overlapping ensure various solutions from 12 – 80 poles.
- Robust miniaturisation - simple and safe connection even possible under unfavorable mating conditions – e.g. inclination or offset.

General ordering data

Type	FMH1 S1/16V F1 B RL	Version
Order No.	2746990000	PCB plug-in connector, male header, SMD solder connection, Pitch in
GTIN (EAN)	4064675001232	mm (P): 1.27 mm, Number of poles: 16, 180°, Tape
Qty.	280 ST	

FFP D1/16H S1 B TY

Weidmüller Interface GmbH & Co. KG

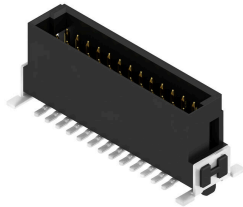
Klingenbergstraße 26

D-32758 Detmold

Germany

www.weidmueller.com

Counterpart

FMH3 - Male header, Board connection (stack height 3.25 mm)

OMNIMATE® - Board-to-Board connectors

Flexible engineering of compact devices

The use of future-proof contact systems, as well as the optimisation of manufacturing processes, are increasingly important in the development of efficient industrial devices, especially in the field of Industry 4.0. OMNIMATE® board-to-board connectors feature a 1.27 mm pitch and offer maximum flexibility due to different designs.

- Flexible device design - Industrial suitable density combined with high flexible connection combinations (Mezzanine, Mother-to-Daughter, Extender-card, Cable-to-Board)
- Automation-Ready - Developed for automatic assembly with high precise pin coplanarity and SMT-fixation
- Reliable contact - Up to 500 mating cycles due to industry suitable gold-surface (PdNi-Au)
- Process-Ready - High performance LCP material for reflow soldering
- Scalability - Different heights with high contact overlapping ensure various solutions from 12 – 80 poles.
- Robust miniaturisation - simple and safe connection even possible under unfavorable mating conditions – e.g. inclination or offset.

General ordering data

Type	FMH3 S1/16V F1 B RL	Version
Order No.	2747080000	PCB plug-in connector, male header, SMD solder connection, Pitch in
GTIN (EAN)	4064675001423	mm (P): 1.27 mm, Number of poles: 16, 180°, Tape
Qty.	280 ST	