

## FFH S1/26H F1 B RL

Weidmüller Interface GmbH &amp; Co. KG

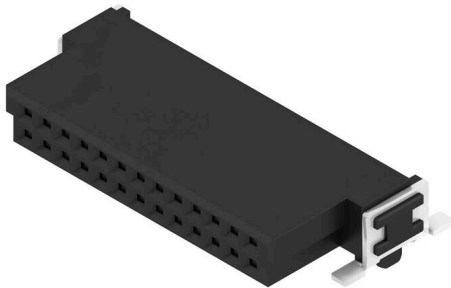
Klingenbergstraße 26

D-32758 Detmold

Germany

www.weidmueller.com

## Product image



## OMNIMATE® - Board-to-Board connectors

## Flexible engineering of compact devices

The use of future-proof contact systems, as well as the optimisation of manufacturing processes, are increasingly important in the development of efficient industrial devices, especially in the field of Industry 4.0. OMNIMATE® board-to-board connectors feature a 1.27 mm pitch and offer maximum flexibility due to different designs.

- Flexible device design - Industrial suitable density combined with high flexible connection combinations (Mezzanine, Mother-to-Daughter, Extender-card, Cable-to-Board)
- Automation-Ready - Developed for automatic assembly with high precise pin coplanarity and SMT-fixation
- Reliable contact - Up to 500 mating cycles due to industrial suitable gold-surface (PdNi-Au)
- Process-Ready - High performance LCP material for reflow soldering
- Scalability - Different heights with high contact overlapping ensure various solutions from 12 – 80 poles.
- Robust miniaturisation - simple and safe connection even possible under unfavorable mating conditions – e.g. inclination or offset.

## General ordering data

Version	PCB plug-in connector, female header, SMD solder connection, Pitch in mm (P): 1.27 mm, Number of poles: 26, 90°, Tape
Order No.	<a href="#">2747460000</a>
Type	FFH S1/26H F1 B RL
GTIN (EAN)	4064675000877
Qty.	560 items
Product data	IEC: / 2.8 A UL: 150 V
Packaging	Tape

## FFH S1/26H F1 B RL

Weidmüller Interface GmbH & Co. KG  
Klingenbergstraße 26  
D-32758 Detmold  
Germany

www.weidmueller.com

## Technical data

## Approvals

Approvals



ROHS Conform

UL File Number Search [UL Website](#)

Certificate No. (cURus) E92202

## Dimensions and weights

Depth	10.9 mm	Depth (inches)	0.4291 inch
Height	3.7 mm	Height (inches)	0.1457 inch
Width	21.59 mm	Width (inches)	0.85 inch
Net weight	3.88 g		

## Environmental Product Compliance

RoHS Compliance Status	Compliant without exemption
REACH SVHC	No SVHC above 0.1 wt%

## System specifications

Transmission rate	3.125 Gbit/s	Product family	OMNIMATE Signal - Board-to-Board
Type of connection	Board connection	Mounting onto the PCB	SMD solder connection
Pitch in mm (P)	1.27 mm	Pitch in inches (P)	0.050 "
Outgoing elbow	90°	Number of poles	26
Number of solder pins per pole	1	Coplanarity:	0.1 mm
Number of rows	1	Pin series quantity	2
Protection degree	IP20	Volume resistance	<25 mΩ
Plugging cycles	500	Plugging force/pole, max.	0.6 N
Pulling force/pole, max.	0.6 N		

## Material data

Insulating material	LCP	Colour	black
Colour chart (similar)	RAL 9011	Insulating material group	IIIa
Insulation resistance	≥ 10 <sup>10</sup> Ω	Moisture Level (MSL)	1
UL 94 flammability rating	V-0	Contact base material	Copper alloy
Contact material	Cu-alloy	Contact surface	Gold over nickel
Layer structure of plug contact	≥ 2 μm Ni / ≥ 0.4 μm PdNi / ≥ 0.05 μm Au	Storage temperature, min.	-40 °C
Storage temperature, max.	70 °C	Operating temperature, min.	-55 °C
Operating temperature, max.	125 °C		

## Rated data acc. to IEC

Rated current, min. number of poles (Tu=20°C)	2.8 A	Creepage distance, min.	0.4 mm
Clearance, min.	0.4 mm		

## Rated data acc. to UL 1977

Reference to approval values	Specifications are maximum values, details - see approval certificate.	Rated voltage (UL 1977) (obsolete)	150 V
------------------------------	--	------------------------------------	-------

## FFH S1/26H F1 B RL

**Weidmüller Interface GmbH & Co. KG**  
Klingenbergstraße 26  
D-32758 Detmold  
Germany

[www.weidmueller.com](http://www.weidmueller.com)

## Technical data

### Packing

Packaging	Tape	VPE length	350.00 mm
VPE width	340.00 mm	VPE height	135.00 mm

### Important note

IPC conformity      Conformity: The products are developed, manufactured and delivered according international recognized standards and norms and comply with the assured properties in the data sheet resp. fulfill decorative properties in accordance with IPC-A-610 "Class 2". Further claims on the products can be evaluated on request.

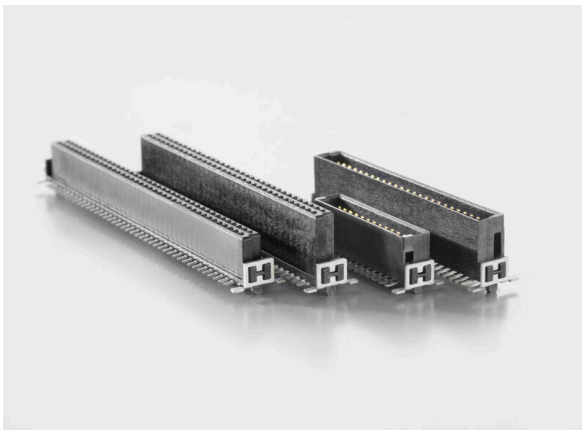
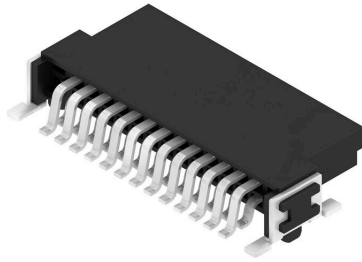
Notes

### Classifications

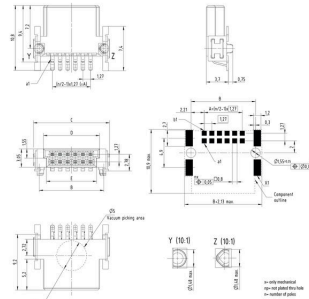
ETIM 8.0	EC002637	ETIM 9.0	EC002637
ETIM 10.0	EC002637	ECLASS 14.0	27-46-02-01
ECLASS 15.0	27-46-02-01		

# Drawings

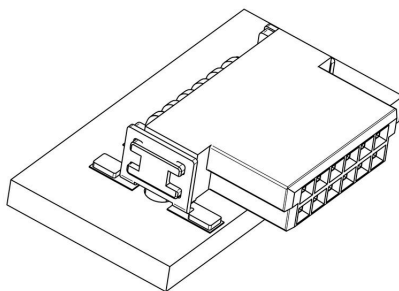
## Product image



Type	Order no.	No. of poles	A	B	C	D	E
FFH S1/26H F1 B RL	2747430000	12	6.35	19.27	12.7	5.37	8.37
FFH S1/26H F1 B RL	2747430001	16	6.35	19.27	15.24	11.81	10.81
FFH S1/26H F1 B RL	2747430002	20	11.43	15.88	17.19	14.45	13.45
FFH S1/26H F1 B RL	2747430003	26	15.48	15.88	21.29	18.29	17.29
FFH S1/26H F1 B RL	2747430004	32	18.68	22.47	26.4	22.57	21.57
FFH S1/26H F1 B RL	2747430005	40	24.43	26.81	30.49	27.15	26.15
FFH S1/26H F1 B RL	2747430006	50	31.43	34.3	36.53	33.1	32.1
FFH S1/26H F1 B RL	2747430007	60	41.87	40.27	46.29	44.93	43.93
FFH S1/26H F1 B RL	2747430008	80	48.53	53.91	58.69	52.55	51.55



## Detailed drawing



## Derating curve



