

FFH S1/16H F1 B RL

Weidmüller Interface GmbH & Co. KG

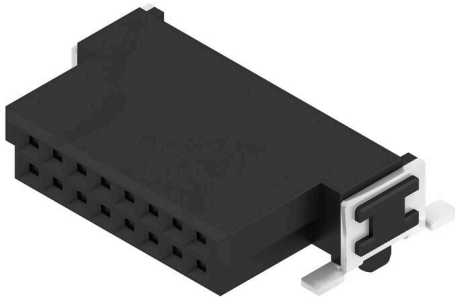
Klingenbergstraße 26

D-32758 Detmold

Germany

www.weidmueller.com

Product image



OMNIMATE® - Board-to-Board connectors

Flexible engineering of compact devices

The use of future-proof contact systems, as well as the optimisation of manufacturing processes, are increasingly important in the development of efficient industrial devices, especially in the field of Industry 4.0. OMNIMATE® board-to-board connectors feature a 1.27 mm pitch and offer maximum flexibility due to different designs.

- Flexible device design - Industrial suitable density combined with high flexible connection combinations (Mezzanine, Mother-to-Daughter, Extender-card, Cable-to-Board)
- Automation-Ready - Developed for automatic assembly with high precise pin coplanarity and SMT-fixation
- Reliable contact - Up to 500 mating cycles due to industrial suitable gold-surface (PdNi-Au)
- Process-Ready - High performance LCP material for reflow soldering
- Scalability - Different heights with high contact overlapping ensure various solutions from 12 – 80 poles.
- Robust miniaturisation - simple and safe connection even possible under unfavorable mating conditions – e.g. inclination or offset.

General ordering data

Version	PCB plug-in connector, female header, SMD solder connection, Pitch in mm (P): 1.27 mm, Number of poles: 16, 90°, Tape
Order No.	2747440000
Type	FFH S1/16H F1 B RL
GTIN (EAN)	4064675000907
Qty.	560 items
Product data	IEC: / 2.8 A UL: 150 V
Packaging	Tape

FFH S1/16H F1 B RL

Weidmüller Interface GmbH & Co. KG
Klingenbergstraße 26
D-32758 Detmold
Germany

www.weidmueller.com

Technical data

Approvals

Approvals



ROHS Conform

UL File Number Search [UL Website](#)

Certificate No. (cURus) E92202

Dimensions and weights

Depth	10.9 mm	Depth (inches)	0.4291 inch
Height	3.7 mm	Height (inches)	0.1457 inch
Width	15.24 mm	Width (inches)	0.6 inch
Net weight	2.9 g		

Environmental Product Compliance

RoHS Compliance Status	Compliant without exemption
REACH SVHC	No SVHC above 0.1 wt%

System specifications

Transmission rate	3.125 Gbit/s	Product family	OMNIMATE Signal - Board-to-Board
Type of connection	Board connection	Mounting onto the PCB	SMD solder connection
Pitch in mm (P)	1.27 mm	Pitch in inches (P)	0.050 "
Outgoing elbow	90°	Number of poles	16
Number of solder pins per pole	1	Coplanarity:	0.1 mm
Number of rows	1	Pin series quantity	2
Protection degree	IP20	Volume resistance	<25 mΩ
Plugging cycles	500	Plugging force/pole, max.	0.6 N
Pulling force/pole, max.	0.6 N		

Material data

Insulating material	LCP	Colour	black
Colour chart (similar)	RAL 9011	Insulating material group	IIIa
Insulation resistance	≥ 10 ¹⁰ Ω	Moisture Level (MSL)	1
UL 94 flammability rating	V-0	Contact base material	Copper alloy
Contact material	Cu-alloy	Contact surface	Gold over nickel
Layer structure of plug contact	≥ 2 μm Ni / ≥ 0.4 μm PdNi / ≥ 0.05 μm Au	Storage temperature, min.	-40 °C
Storage temperature, max.	70 °C	Operating temperature, min.	-55 °C
Operating temperature, max.	125 °C		

Rated data acc. to IEC

Rated current, min. number of poles (Tu=20°C)	2.8 A	Creepage distance, min.	0.4 mm
Clearance, min.	0.4 mm		

Rated data acc. to UL 1977

Reference to approval values	Specifications are maximum values, details - see approval certificate.	Rated voltage (UL 1977) (obsolete)	150 V
------------------------------	--	------------------------------------	-------

FFH S1/16H F1 B RL

Weidmüller Interface GmbH & Co. KG
Klingenbergstraße 26
D-32758 Detmold
Germany

www.weidmueller.com

Technical data**Packing**

Packaging	Tape	VPE length	305.00 mm
VPE width	202.00 mm	VPE height	25.00 mm

Important note

IPC conformity Conformity: The products are developed, manufactured and delivered according international recognized standards and norms and comply with the assured properties in the data sheet resp. fulfill decorative properties in accordance with IPC-A-610 "Class 2". Further claims on the products can be evaluated on request.

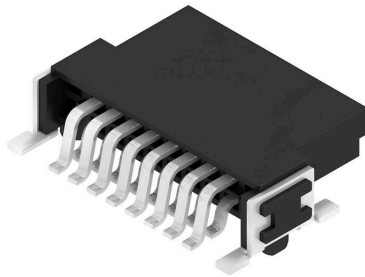
Notes

Classifications

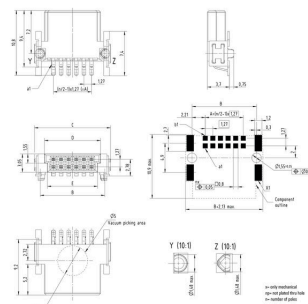
ETIM 8.0	EC002637	ETIM 9.0	EC002637
ETIM 10.0	EC002637	ECLASS 14.0	27-46-02-01
ECLASS 15.0	27-46-02-01		

Drawings

Product image



Type	Order no.	No. of poles	A	B	C	D	E
FFH S1/12H F1 B RL	2747430000	12	6.35	19.27	12.7	8.57	8.57
FFH S1/16H F1 B RL	2747430001	16	8.89	19.31	19.24	11.81	10.81
FFH S1/20H F1 B RL	2747430002	20	11.43	19.85	17.78	14.45	13.45
FFH S1/24H F1 B RL	2747430003	24	13.97	19.81	21.84	18.51	17.51
FFH S1/28H F1 B RL	2747430004	28	16.51	22.47	26.4	22.57	21.57
FFH S1/32H F1 B RL	2747430005	32	19.05	24.13	28.04	24.13	23.13
FFH S1/36H F1 B RL	2747430006	36	21.59	24.13	30.68	26.19	25.19
FFH S1/40H F1 B RL	2747430007	40	24.13	24.13	33.32	28.25	27.25
FFH S1/44H F1 B RL	2747430008	44	26.67	24.13	35.96	30.31	29.31
FFH S1/48H F1 B RL	2747430009	48	29.21	24.13	38.60	32.38	31.38
FFH S1/52H F1 B RL	2747430010	52	31.75	24.13	41.24	34.44	33.44
FFH S1/56H F1 B RL	2747430011	56	34.29	24.13	43.88	36.50	35.50
FFH S1/60H F1 B RL	2747430012	60	36.83	24.13	46.52	38.56	37.56
FFH S1/64H F1 B RL	2747430013	64	39.37	24.13	49.16	40.62	39.62
FFH S1/68H F1 B RL	2747430014	68	41.91	24.13	51.80	42.68	41.68
FFH S1/72H F1 B RL	2747430015	72	44.45	24.13	54.44	44.74	43.74
FFH S1/76H F1 B RL	2747430016	76	46.99	24.13	57.08	46.80	45.80
FFH S1/80H F1 B RL	2747430017	80	49.53	24.13	59.72	48.86	47.86



Detailed drawing



Derating curve



