

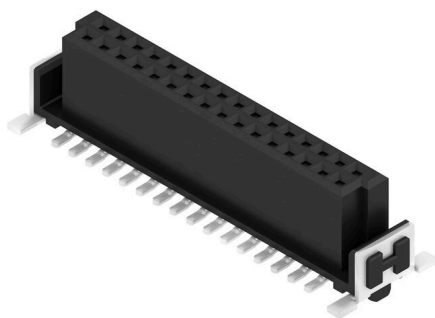
FFH6 S1/32V F1 B RL
Weidmüller Interface GmbH & Co. KG

Klingenbergstraße 26

D-32758 Detmold

Germany

www.weidmueller.com

Product image

OMNIMATE® - Board-to-Board connectors
Flexible engineering of compact devices

The use of future-proof contact systems, as well as the optimisation of manufacturing processes, are increasingly important in the development of efficient industrial devices, especially in the field of Industry 4.0. OMNIMATE® board-to-board connectors feature a 1.27 mm pitch and offer maximum flexibility due to different designs.

- Flexible device design - Industrial suitable density combined with high flexible connection combinations (Mezzanine, Mother-to-Daughter, Extender-card, Cable-to-Board)
- Automation-Ready - Developed for automatic assembly with high precise pin coplanarity and SMT-fixation
- Reliable contact - Up to 500 mating cycles due to industrial suitable gold-surface (PdNi-Au)
- Process-Ready - High performance LCP material for reflow soldering
- Scalability - Different heights with high contact overlapping ensure various solutions from 12 – 80 poles.
- Robust miniaturisation - simple and safe connection even possible under unfavorable mating conditions – e.g. inclination or offset.

General ordering data

| | |
|--------------|--|
| Version | PCB plug-in connector, female header, SMD solder connection, Pitch in mm (P): 1.27 mm, Number of poles: 32, 180°, Tape |
| Order No. | 2747290000 |
| Type | FFH6 S1/32V F1 B RL |
| GTIN (EAN) | 4064675001140 |
| Qty. | 280 items |
| Product data | IEC: / 2.8 A UL: 150 V |
| Packaging | Tape |

FFH6 S1/32V F1 B RL

Weidmüller Interface GmbH & Co. KG
 Klingenbergstraße 26
 D-32758 Detmold
 Germany

www.weidmueller.com

Technical data

Approvals

Approvals



| | |
|-------------------------|----------------------------|
| ROHS | Conform |
| UL File Number Search | UL Website |
| Certificate No. (cURus) | E92202 |

Dimensions and weights

| | | | |
|------------|---------|-----------------|-------------|
| Depth | 7.8 mm | Depth (inches) | 0.3071 inch |
| Height | 7.1 mm | Height (inches) | 0.2795 inch |
| Width | 25.4 mm | Width (inches) | 1 inch |
| Net weight | 6.11 g | | |

Environmental Product Compliance

| | |
|------------------------|-----------------------------|
| RoHS Compliance Status | Compliant without exemption |
| REACH SVHC | No SVHC above 0.1 wt% |

System specifications

| | | | |
|--------------------------------|------------------|---------------------------|----------------------------------|
| Transmission rate | 3.125 Gbit/s | Product family | OMNIMATE Signal - Board-to-Board |
| Type of connection | Board connection | Mounting onto the PCB | SMD solder connection |
| Pitch in mm (P) | 1.27 mm | Pitch in inches (P) | 0.050 " |
| Outgoing elbow | 180° | Number of poles | 32 |
| Number of solder pins per pole | 1 | Coplanarity: | 0.1 mm |
| Number of rows | 1 | Pin series quantity | 2 |
| Protection degree | IP20 | Volume resistance | <25 mΩ |
| Plugging cycles | 500 | Plugging force/pole, max. | 0.6 N |
| Pulling force/pole, max. | 0.6 N | | |

Material data

| | | | |
|---------------------------------|--|-----------------------------|------------------|
| Insulating material | LCP | Colour | black |
| Colour chart (similar) | RAL 9011 | Insulating material group | IIIa |
| Insulation resistance | $\geq 10^{10} \Omega$ | Moisture Level (MSL) | 1 |
| UL 94 flammability rating | V-0 | Contact base material | Copper alloy |
| Contact material | Cu-alloy | Contact surface | Gold over nickel |
| Layer structure of plug contact | $\geq 2 \mu\text{m Ni} / \geq 0.4 \mu\text{m PdNi} / \geq 0.05 \mu\text{m Au}$ | Storage temperature, min. | -40 °C |
| Storage temperature, max. | 70 °C | Operating temperature, min. | -55 °C |
| Operating temperature, max. | 125 °C | | |

Rated data acc. to IEC

| | | | |
|---|--------|-------------------------|--------|
| Rated current, min. number of poles (Tu=20°C) | 2.8 A | Creepage distance, min. | 0.4 mm |
| Clearance, min. | 0.4 mm | | |

Rated data acc. to UL 1977

| | | | |
|------------------------------|--|------------------------------------|-------|
| Reference to approval values | Specifications are maximum values, details - see approval certificate. | Rated voltage (UL 1977) (obsolete) | 150 V |
|------------------------------|--|------------------------------------|-------|

FFH6 S1/32V F1 B RL**Weidmüller Interface GmbH & Co. KG**Klingenbergstraße 26
D-32758 Detmold
Germanywww.weidmueller.com**Technical data****Packing**

| | | | |
|-----------|-----------|------------|-----------|
| Packaging | Tape | VPE length | 350.00 mm |
| VPE width | 340.00 mm | VPE height | 135.00 mm |

Important note

| | |
|----------------|--|
| IPC conformity | Conformity: The products are developed, manufactured and delivered according international recognized standards and norms and comply with the assured properties in the data sheet resp. fulfill decorative properties in accordance with IPC-A-610 "Class 2". Further claims on the products can be evaluated on request. |
|----------------|--|

Notes

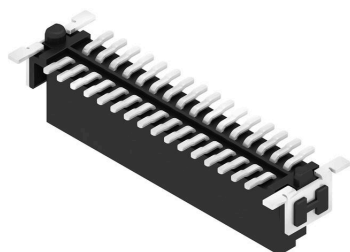
Classifications

| | | | |
|-------------|-------------|-------------|-------------|
| ETIM 8.0 | EC002637 | ETIM 9.0 | EC002637 |
| ETIM 10.0 | EC002637 | ECLASS 14.0 | 27-46-02-01 |
| ECLASS 15.0 | 27-46-02-01 | | |

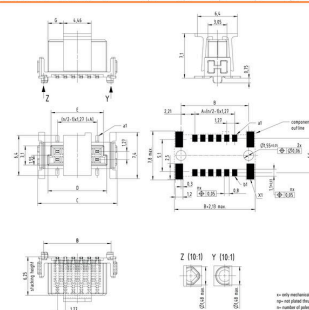
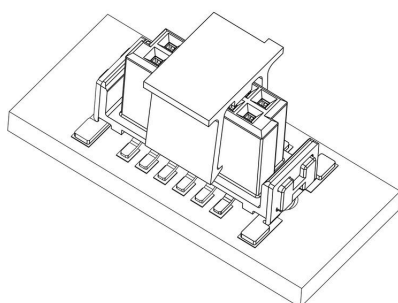
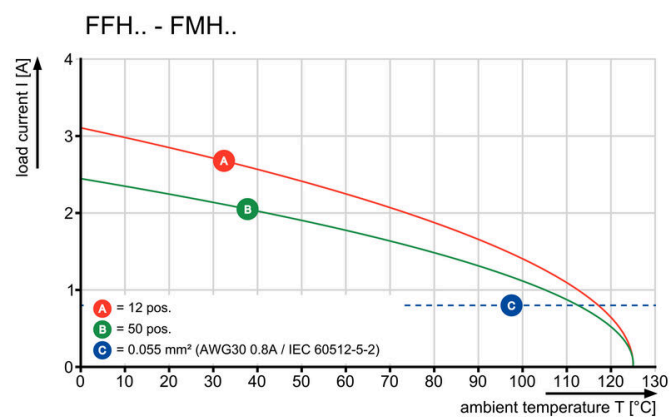
FFH6 S1/32V F1 B RL

Weidmüller Interface GmbH & Co. KG
 Klingenbergstraße 26
 D-32758 Detmold
 Germany

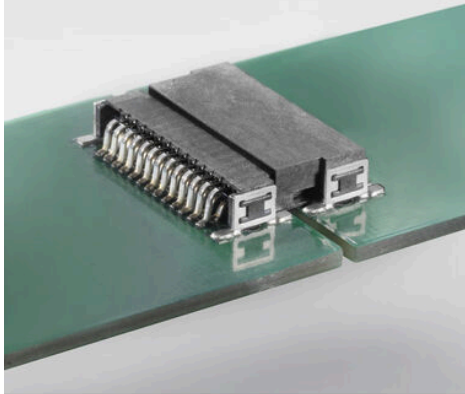
www.weidmueller.com

Drawings
Product image

Dimensional drawing

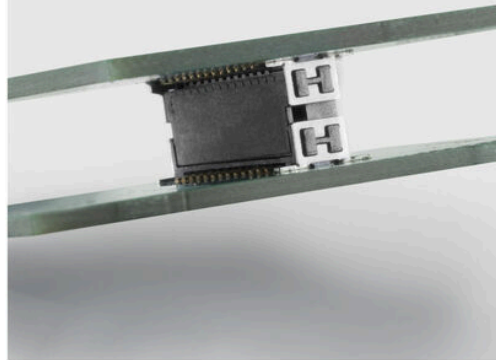
| Type | Order no. | No. of poles | A | B | C | D | E | G |
|---------------------|------------|--------------|-------|-------|-------|-------|-------|-------|
| FFH6 S1/12V F1 B RL | 2747200000 | 12 | 6.35 | 10.17 | 12.7 | 9.37 | 6.37 | 2.46 |
| FFH6 S1/16V F1 B RL | 2747200000 | 16 | 6.80 | 13.31 | 15.24 | 11.91 | 10.91 | 3.75 |
| FFH6 S1/20V F1 B RL | 2747200000 | 20 | 11.43 | 15.85 | 17.78 | 14.45 | 13.45 | 5 |
| FFH6 S1/20V F1 B RL | 2747200000 | 20 | 15.24 | 19.69 | 21.59 | 18.26 | 17.26 | 7.64 |
| FFH6 S1/32V F1 B RL | 2747200000 | 32 | 19.5 | 22.67 | 25.4 | 22.07 | 21.07 | 8.81 |
| FFH6 S1/40V F1 B RL | 2747200000 | 40 | 25.12 | 26.59 | 30.48 | 27.16 | 26.16 | 11.26 |
| FFH6 S1/50V F1 B RL | 2747200000 | 50 | 30.48 | 34.29 | 36.83 | 33.5 | 32.5 | 15.16 |
| FFH6 S1/60V F1 B RL | 2747200000 | 60 | 41.91 | 46.33 | 48.26 | 44.93 | 43.93 | 20.34 |
| FFH6 S1/80V F1 B RL | 2747200000 | 80 | 48.33 | 53.95 | 55.88 | 52.55 | 51.55 | 24.65 |


Detailed drawing

Derating curve


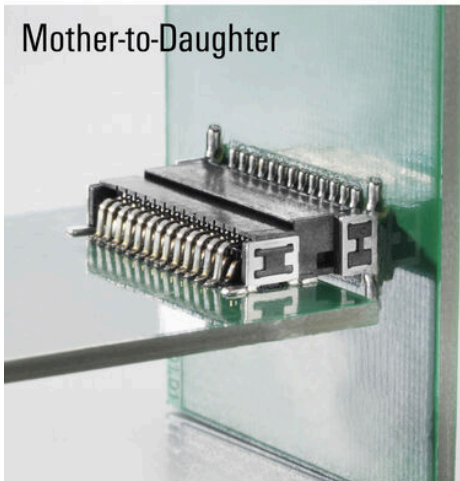
Extender-Board



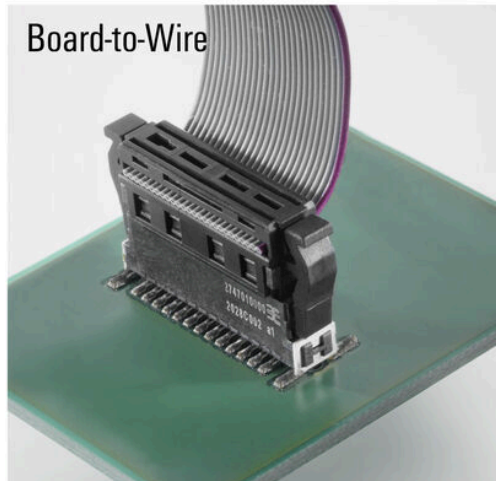
Mezzanine



Mother-to-Daughter



Board-to-Wire



FFH6 S1/32V F1 B RL

Weidmüller Interface GmbH & Co. KG

Klingenbergstraße 26

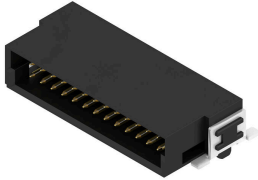
D-32758 Detmold

Germany

www.weidmueller.com

Counterpart

FMH - Male header, Board connection



OMNIMATE® - Board-to-Board connectors

Flexible engineering of compact devices

The use of future-proof contact systems, as well as the optimisation of manufacturing processes, are increasingly important in the development of efficient industrial devices, especially in the field of Industry 4.0. OMNIMATE® board-to-board connectors feature a 1.27 mm pitch and offer maximum flexibility due to different designs.

- Flexible device design - Industrial suitable density combined with high flexible connection combinations (Mezzanine, Mother-to-Daughter, Extender-card, Cable-to-Board)
- Automation-Ready - Developed for automatic assembly with high precise pin coplanarity and SMT-fixation
- Reliable contact - Up to 500 mating cycles due to industry suitable gold-surface (PdNi-Au)
- Process-Ready - High performance LCP material for reflow soldering
- Scalability - Different heights with high contact overlapping ensure various solutions from 12 – 80 poles.
- Robust miniaturisation - simple and safe connection even possible under unfavorable mating conditions – e.g. inclination or offset.

General ordering data

| | | |
|------------|----------------------------|---|
| Type | FMH S1/32H F1 B RL | Version |
| Order No. | 2747200000 | PCB plug-in connector, male header, SMD solder connection, Pitch in |
| GTIN (EAN) | 4064675001041 | mm (P): 1.27 mm, Number of poles: 32, 90°, Tape |
| Qty. | 560 ST | |

FFH6 S1/32V F1 B RL

Weidmüller Interface GmbH & Co. KG

Klingenbergstraße 26

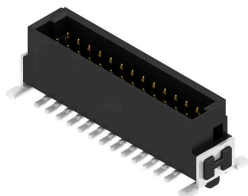
D-32758 Detmold

Germany

www.weidmueller.com

Counterpart

FMH1 - Male header, Board connection (stack height 1.75 mm)



OMNIMATE® - Board-to-Board connectors

Flexible engineering of compact devices

The use of future-proof contact systems, as well as the optimisation of manufacturing processes, are increasingly important in the development of efficient industrial devices, especially in the field of Industry 4.0. OMNIMATE® board-to-board connectors feature a 1.27 mm pitch and offer maximum flexibility due to different designs.

- Flexible device design - Industrial suitable density combined with high flexible connection combinations (Mezzanine, Mother-to-Daughter, Extender-card, Cable-to-Board)
- Automation-Ready - Developed for automatic assembly with high precise pin coplanarity and SMT-fixation
- Reliable contact - Up to 500 mating cycles due to industry suitable gold-surface (PdNi-Au)
- Process-Ready - High performance LCP material for reflow soldering
- Scalability - Different heights with high contact overlapping ensure various solutions from 12 – 80 poles.
- Robust miniaturisation - simple and safe connection even possible under unfavorable mating conditions – e.g. inclination or offset.

General ordering data

| | | |
|------------|----------------------------|---|
| Type | FMH1 S1/32V F1 B RL | Version |
| Order No. | 2747020000 | PCB plug-in connector, male header, SMD solder connection, Pitch in |
| GTIN (EAN) | 4064675001492 | mm (P): 1.27 mm, Number of poles: 32, 180°, Tape |
| Qty. | 280 ST | |

FFH6 S1/32V F1 B RL

Weidmüller Interface GmbH & Co. KG

Klingenbergstraße 26

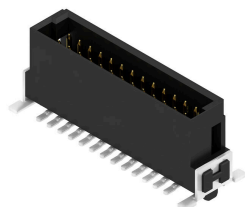
D-32758 Detmold

Germany

www.weidmueller.com

Counterpart

FMH3 - Male header, Board connection (stack height 3.25 mm)



OMNIMATE® - Board-to-Board connectors

Flexible engineering of compact devices

The use of future-proof contact systems, as well as the optimisation of manufacturing processes, are increasingly important in the development of efficient industrial devices, especially in the field of Industry 4.0. OMNIMATE® board-to-board connectors feature a 1.27 mm pitch and offer maximum flexibility due to different designs.

- Flexible device design - Industrial suitable density combined with high flexible connection combinations (Mezzanine, Mother-to-Daughter, Extender-card, Cable-to-Board)
- Automation-Ready - Developed for automatic assembly with high precise pin coplanarity and SMT-fixation
- Reliable contact - Up to 500 mating cycles due to industry suitable gold-surface (PdNi-Au)
- Process-Ready - High performance LCP material for reflow soldering
- Scalability - Different heights with high contact overlapping ensure various solutions from 12 – 80 poles.
- Robust miniaturisation - simple and safe connection even possible under unfavorable mating conditions – e.g. inclination or offset.

General ordering data

| | | |
|------------|----------------------------|---|
| Type | FMH3 S1/32V F1 B RL | Version |
| Order No. | 2747110000 | PCB plug-in connector, male header, SMD solder connection, Pitch in |
| GTIN (EAN) | 4064675001058 | mm (P): 1.27 mm, Number of poles: 32, 180°, Tape |
| Qty. | 280 ST | |