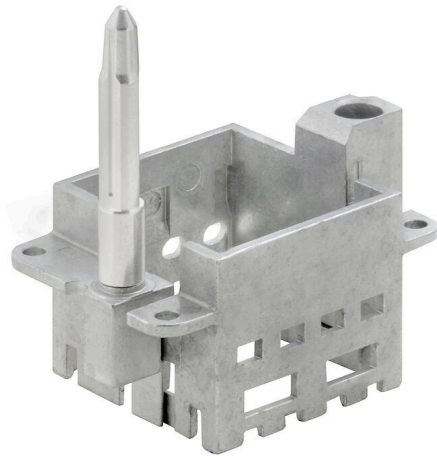


HDC MFGL 6B AB

Weidmüller Interface GmbH & Co. KG
Klingenbergstraße 26
D-32758 Detmold
Germany

www.weidmueller.com



General ordering data

| | |
|------------|----------------------------|
| Version | Frame |
| Order No. | 2736970000 |
| Type | HDC MFGL 6B AB |
| GTIN (EAN) | 4050118823035 |
| Qty. | 1 items |

HDC MFGL 6B AB

Weidmüller Interface GmbH & Co. KG
 Klingenbergstraße 26
 D-32758 Detmold
 Germany

www.weidmueller.com

Technical data

Approvals

| | |
|------|---------|
| ROHS | Conform |
|------|---------|

Dimensions and weights

| | | | |
|------------|----------|----------------|-------------|
| Depth | 37.35 mm | Depth (inches) | 1.4705 inch |
| Width | 51 mm | Width (inches) | 2.0079 inch |
| Net weight | 56.32 g | | |

Environmental Product Compliance

| | |
|--------------------------------------|--------------------------------------|
| RoHS Compliance Status | Compliant with exemption |
| RoHS Exemption (if applicable/known) | 6c |
| REACH SVHC | Lead 7439-92-1 |
| SCIP | 425d5315-3039-4ee5-aab3-6b6a65cc297f |

General data

| | | | |
|------------------------|--------------|-----------------|----------|
| Installation size | 3 | Plugging cycles | ≥ 500 |
| Basic material | Diecast zinc | Series | ModuPlug |
| Version of guiding pin | long | Number of slots | 2 |

Important note

| | |
|---------------------|--|
| Product information | The PE connection is no longer available for the version with guide pin. |
|---------------------|--|

Classifications

| | | | |
|-------------|-------------|-------------|-------------|
| ETIM 8.0 | EC002312 | ETIM 9.0 | EC002312 |
| ETIM 10.0 | EC002312 | ECLASS 14.0 | 27-44-02-92 |
| ECLASS 15.0 | 27-44-02-92 | | |

HDC MFGL 6B AB

Weidmüller Interface GmbH & Co. KG
Klingenbergstraße 26
D-32758 Detmold
Germany

Drawings

www.weidmueller.com

