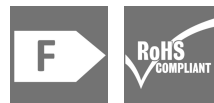


**WIL-LWXXXX-4000D024-555SXX0.3BM12GXXXX****Weidmüller Interface GmbH & Co. KG**

Klingenbergstraße 26

D-32758 Detmold

Germany

[www.weidmueller.com](http://www.weidmueller.com)

The WIL-LED lights family: Only 8mm (9.4mm with magnet) high LED lamp for 24V DC with very high luminous efficacy and high Lifespan (greater 60 000h). Very robust construction, by full potting and metal housing - waterproof (IP67). Due to its 4000K light color, neutral white, suitable for the various applications. Very easy to connect thanks to the M12 connection. Due to the low power consumption, a small enough power supply with 24V for operation.

**General ordering data**

Order No.	2732860000
Type	<a href="#">WIL-LWXXXX-4000D024-555SXX0.3B-M12GXXXX</a>
GTIN (EAN)	4050118829242
Qty.	1 items

WIL-LWXXXX-4000D024-555SXX0.3BM12GXXXX

**Weidmüller Interface GmbH & Co. KG**  
 Klingenbergstraße 26  
 D-32758 Detmold  
 Germany

[www.weidmueller.com](http://www.weidmueller.com)

## Technical data

### Approvals

Approvals



ROHS Conform

UL File Number Search [UL Website](#)

Certificate no. (cULus) E354496

### Dimensions and weights

Depth	40 mm	Depth (inches)	1.5748 inch
Height	8 mm	Height (inches)	0.315 inch
Width	555 mm	Width (inches)	21.8503 inch
Net weight	497.4 g		

### Temperatures

Operating temperature -20 - 60°C

### Environmental Product Compliance

RoHS Compliance Status	Compliant with exemption
RoHS Exemption (if applicable/known)	6c
REACH SVHC	Lead 7439-92-1
SCIP	bf1e8170-69bb-4440-b3e0-4da351a9a3b0
EPREL Registration number	1324407

### Cable technical specifications

Cable Material	PUR	Sheathing colour	black
Housing main material	hard anodised aluminium	Cable length	0.3 m
Core cross-section	0.34 mm <sup>2</sup>		

### Connection data

LED Modul is attachable	no	Version	pin, straight
Number of poles	2	Coding	A-coded
Connection thread	M12	Tightening torque	0.8 Nm
Wiring	Pin 4 (Strand: black) control white LED, Pin 3 (Strand: blue)		

### Electric data

Rated voltage	24 V DC	Rated current	0.77 A
Power	18.8 W	Dimmable	Yes

### General technical data

Type of connection	Pre-assembled cable	Electronic equipment on rolling stock	No
Recommended class according to UL for NEC Class 2 use of an power supply		Shape of the LED module	Rectangular
Number of LEDs	35	Light colour (CCT)	4000K, Neutral white
Luminosity	650 cd	Light current	2265 lm

**WIL-LWXXXX-4000D024-555SXX0.3BM12GXXXX****Weidmüller Interface GmbH & Co. KG**

Klingenbergstraße 26

D-32758 Detmold

Germany

[www.weidmueller.com](http://www.weidmueller.com)**Technical data**

Emitting angle	40 °	Illumination level	705 lux
Operating life	60.000 h	Type of mounting	Screw mounting
Drill hole spacing	540 mm	Impact resistance	IK05
Protection degree	IP67	Efficiency class (according to EU Directive No. 874/2012)	Not required

**Material data**

Material of LED cover	ESG	Housing main material	hard anodised aluminium
Threaded ring material	PA	Material of end caps	PBT

**Classifications**

ETIM 8.0	EC000996	ETIM 9.0	EC000996
ETIM 10.0	EC000996	ECLASS 14.0	27-11-06-35
ECLASS 15.0	27-11-06-35		

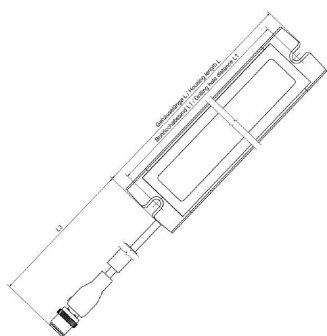
**WIL-LWXXXX-4000D024-555SXX0.3BM12GXXXX**

**Weidmüller Interface GmbH & Co. KG**  
Klingenbergstraße 26  
D-32758 Detmold  
Germany

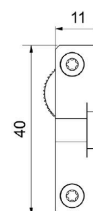
[www.weidmueller.com](http://www.weidmueller.com)

## Drawings

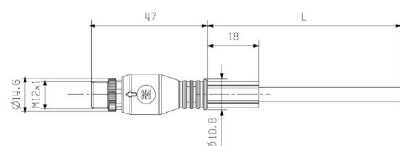
### Dimensioned drawing



### Detailed drawing



### Detailed drawing



### Pole scheme

