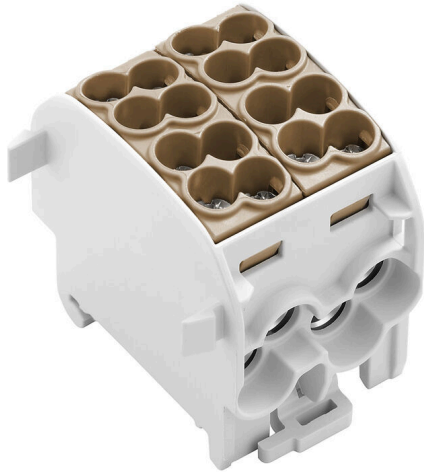


WPD 201 4X25/4X16 BN**Weidmüller Interface GmbH & Co. KG**

Klingenbergstraße 26

D-32758 Detmold

Germany

www.weidmueller.com**Building installation wiring**

For building installations, we offer a complete system that revolves around the 10×3 copper rail and comprises perfectly coordinated components: from installation terminal blocks, neutral conductor terminal blocks and distribution terminal blocks to comprehensive accessories such as busbars and busbar holders.

General ordering data

Version	Potential distributor terminal, Screw connection, Light Grey, 25 mm ² , 152 A, 1000 V, Number of connections: 8, Number of levels: 1
Order No.	2731250000
Type	WPD 201 4X25/4X16 BN
GTIN (EAN)	4050118810479
Qty.	2 items

WPD 201 4X25/4X16 BN

Weidmüller Interface GmbH & Co. KG
Klingenbergstraße 26
D-32758 Detmold
Germany

www.weidmueller.com

Technical data

Approvals

Approvals



ROHS Conform

Dimensions and weights

Depth	49.3 mm	Depth (inches)	1.9409 inch
Height	55.7 mm	Height (inches)	2.1929 inch
Width	43.6 mm	Width (inches)	1.7165 inch
Net weight	132 g		

Temperatures

Storage temperature	-25 °C...55 °C	Ambient temperature	-50 °C...85 °C
Continuous operating temp., min.	-50 °C	Continuous operating temp., max.	130 °C

Environmental Product Compliance

RoHS Compliance Status	Compliant with exemption
RoHS Exemption (if applicable/known)	6c
REACH SVHC	Lead 7439-92-1
SCIP	9436182c-fbd0-49e8-bf45-a0deac7233a9

Material data

Basic material	Wemid	Colour	Light Grey
UL 94 flammability rating	V-0		

System specifications

Version	Screw connection	End cover plate required	No
Number of potentials	1	Number of levels	1
Number of clamping points per level	2	Levels cross-connected internally	Yes
Mounting rail	TS 35	N-function	No
PE function	No	PEN function	No

Additional technical data

Snap-on	Yes	Explosion-tested version	Yes
Type of mounting	Snap-on		

Conductors for clamping (additional connection)

Connection type, additional connection Screw connection

Conductors for clamping (rated connection)

Wire connection cross section AWG, max.	AWG 4	Connection direction	on side
Type of connection 2	Screw connection	Type of connection	Screw connection
Number of connections	8	Clamping range, max.	25 mm ²
Clamping range, min.	1.5 mm ²	Wire connection cross section AWG, min.	AWG 16

WPD 201 4X25/4X16 BN

Weidmüller Interface GmbH & Co. KG
 Klingenbergstraße 26
 D-32758 Detmold
 Germany

www.weidmueller.com

Technical data

Wire connection cross-section, finely stranded with wire-end ferrules DIN 46228/4, min.	1.5 mm ²	Wire connection cross-section, finely stranded with wire-end ferrules DIN 46228/1, max.	16 mm ²
Wire connection cross-section, finely stranded with wire-end ferrules DIN 46228/1, min.	1.5 mm ²	Wire connection cross section, finely stranded, max.	0 mm ²
Wire connection cross section, finely stranded, min.	1.5 mm ²	Connection cross-section, stranded, max.	25 mm ²
Connection cross-section, stranded, min.	1.5 mm ²	Wire connection cross-section, solid core, max.	25 mm ²
Wire connection cross-section, solid core, min.	1.5 mm ²		

General

Number of poles	1	Wire connection cross section AWG, max.	AWG 4
Wire connection cross section AWG, min.	AWG 16	Standards	IEC 60947-7-1, UL 1059
Mounting rail	TS 35		

Rating data

Rated cross-section	25 mm ²	Rated voltage	1000 V
Rated AC voltage	1000 V	Rated DC voltage	1000 V
Nominal current	152 A	Current at maximum wires	152 A
Standards	IEC 60947-7-1, UL 1059		

Classifications

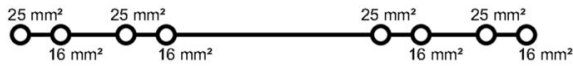
ETIM 8.0	EC000897	ETIM 9.0	EC000897
ETIM 10.0	EC000897	ECLASS 14.0	27-25-01-19
ECLASS 15.0	27-25-01-19		

WPD 201 4X25/4X16 BN

Weidmüller Interface GmbH & Co. KG
 Klingenbergstraße 26
 D-32758 Detmold
 Germany

Drawings

www.weidmueller.com



Conductor connection data according to VDE 0603-2 (Cu), IEC 60947-7-1 (Cu), IEC 61238-1 Class A (Cu+Al)

ØInput (x2) / Output (x2)	Copper		Aluminum	ØInput (x2) / Output (x2)	Copper		Aluminum
	Stripped length	Stripping length	Stripping length		Stripped length	Stripping length	Stripping length
25 mm²	19 mm	19 mm	19 mm	25 mm²	19 mm	19 mm	19 mm
16 mm²	19 mm	19 mm	19 mm	16 mm²	19 mm	19 mm	19 mm
10 mm²	19 mm	19 mm	19 mm	10 mm²	19 mm	19 mm	19 mm
6 mm²	19 mm	19 mm	19 mm	6 mm²	19 mm	19 mm	19 mm
4 mm²	19 mm	19 mm	19 mm	4 mm²	19 mm	19 mm	19 mm
2.5 mm²	19 mm	19 mm	19 mm	2.5 mm²	19 mm	19 mm	19 mm
1.5 mm²	19 mm	19 mm	19 mm	1.5 mm²	19 mm	19 mm	19 mm
Stripping lengths	19 mm		19 mm	Stripping lengths	19 mm		19 mm
score	M6 (+/- PZ2)		M6 (+/- PZ2)	score	M6 (+/- PZ2)		M6 (+/- PZ2)

Stranded Solid Flexible with ferrule

Conductor connection data according to UL 1059 (Al+Cu)

Certificate no. (UR) XCFR2.E60693

Input (line)	Line		Load	
	Copper	Aluminum	Copper	Aluminum
AWG 4	22.1 Lb In	35 Lb In	22.1 Lb In	35 Lb In
AWG 6	22.1 Lb In	22.1 Lb In	22.1 Lb In	22.1 Lb In
AWG 8	22.1 Lb In	22.1 Lb In	22.1 Lb In	22.1 Lb In
AWG 10	22.1 Lb In	22.1 Lb In	22.1 Lb In	22.1 Lb In
AWG 12	22.1 Lb In	22.1 Lb In	22.1 Lb In	22.1 Lb In
AWG 14	22.1 Lb In	22.1 Lb In	22.1 Lb In	22.1 Lb In
AWG 16	22.1 Lb In	22.1 Lb In	22.1 Lb In	22.1 Lb In
max. current	90 A	90 A	65 A	50 A
Voltage size B,C (UR)	600 V			

Stranded Solid Flexible with ferrule

CSA Rating data according to CSA 22.2 No. 158 ng data

Certificate no. (cURus) XCFR2.E60693

Input (line)	Line		Load	
	Copper	Aluminum	Copper	Aluminum
AWG 4	2.5 Nm	4 Nm	2.1 Nm	2.1 Nm
AWG 6	2.5 Nm	2.5 Nm	2.1 Nm	2.1 Nm
AWG 8	2.5 Nm	2.5 Nm	2.1 Nm	2.1 Nm
AWG 10	2.5 Nm	2.5 Nm	2.1 Nm	2.1 Nm
AWG 12	2.5 Nm	2.5 Nm	2.1 Nm	2.1 Nm
AWG 14	2.5 Nm	2.5 Nm	2.1 Nm	2.1 Nm
AWG 16	2.5 Nm	2.5 Nm	2.1 Nm	2.1 Nm
max. current	90 A	90 A	65 A	50 A
Voltage size B,C (UR)	600 V			

Stranded Solid Flexible with ferrule

