

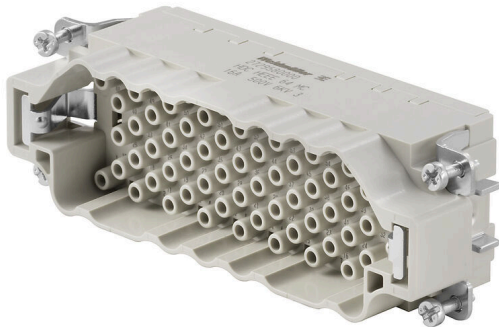
HDC HEEE 64 MC**Weidmüller Interface GmbH & Co. KG**

Klingenbergstraße 26

D-32758 Detmold

Germany

www.weidmueller.com



The HEEE series offers high pole crimp inserts for compact and high performance industrial interfaces. It is based on the proven HE technology and enables reliable signal and power transmission in a confined space. Thanks to the standardized crimp system, processing and contact quality remain consistently stable.

General ordering data

| | |
|------------|--|
| Version | HDC insert, Male, 500 V, 16 A, Number of poles: 64, Crimp connection, Installation size: 8 |
| Order No. | 2729580000 |
| Type | HDC HEEE 64 MC |
| GTIN (EAN) | 4064675010449 |
| Qty. | 1 items |

HDC HEEE 64 MC

Weidmüller Interface GmbH & Co. KG

Klingenbergstraße 26

D-32758 Detmold

Germany

www.weidmueller.com

Technical data

Approvals

Approvals



ROHS Conform

UL File Number Search [UL Website](#)

Certificate No. (cURus) E92202

Dimensions and weights

Net weight 68.6 g

Temperatures

Limit temperature -40 °C ... 125 °C

Environmental Product Compliance

RoHS Compliance Status Compliant without exemption

REACH SVHC Potassium perfluorobutane sulfonate 29420-49-3

SCIP 1609748e-c278-4c9b-b3d1-e6215d2988cd

General data

| | | | |
|--------------------------------------|-----------------------------------|-----------------------------------|--------|
| Number of poles | 64 | | |
| Plugging cycles, silver | ≥ 500 | | |
| Plugging cycles, gold | ≥ 500 | | |
| Type of connection | Crimp connection | | |
| Installation size | 8 | | |
| UL 94 flammability rating | V-0 | | |
| Colour | beige | | |
| Insulation resistance | 1010 Ω | | |
| Insulating material | PC | | |
| Insulating material group | IIIa | | |
| Type | Male | | |
| Pollution severity | 3 | | |
| Basic material | Copper alloy | | |
| Series | HEEE | | |
| Rated voltage (DIN EN 61984) | 500 V | | |
| Rated voltage according to UL/CSA | 600 V AC/DC | | |
| Rated impulse voltage (DIN EN 61984) | 6 kV | | |
| Rated current (DIN EN 61984) | 16 A | | |
| Rated current (UR) | Wire connection cross section AWG | AWG 12 | |
| | Rated current | 18 A | |
| | Wire connection cross section AWG | AWG 14 | |
| | Rated current | 12 A | |
| | Wire connection cross section AWG | AWG 16 | |
| | Rated current | 9 A | |
| | Wire connection cross section AWG | AWG 18 | |
| | Rated current | 7 A | |
| | Wire connection cross section AWG | AWG 20 | |
| | Rated current | 6 A | |
| | Rated current (cUR) | Wire connection cross section AWG | AWG 12 |
| | | Rated current | 11 A |
| Wire connection cross section AWG | | AWG 14 | |

HDC HEEE 64 MC

Weidmüller Interface GmbH & Co. KG
 Klingenbergstraße 26
 D-32758 Detmold
 Germany

www.weidmueller.com

Technical data

| | | |
|-------------------------------|-----------------------------------|--------|
| | Rated current | 8.5 A |
| | Wire connection cross section AWG | AWG 16 |
| | Rated current | 6.5 A |
| | Wire connection cross section AWG | AWG 18 |
| | Rated current | 5.9 A |
| | Wire connection cross section AWG | AWG 20 |
| | Rated current | 4.3 A |
| Free from halogens | true | |
| Low smoke acc. DIN EN 45545-2 | Yes | |
| BG | 8 | |
| Number of signal contacts | 0 | |
| Number of power contacts | 64 | |

Connection data PE

| | | | |
|--------------------|------------------|--------------------------------|-------|
| Connection type PE | Screw connection | Stripping length PE connection | 10 mm |
|--------------------|------------------|--------------------------------|-------|

Version

| | | | |
|--|---------------------|--|-------------------|
| Wire connection cross section AWG, max. | AWG 12 | Stripping length, rated connection | 7.5 mm |
| Type of connection | Crimp connection | Installation size | 8 |
| Wire connection cross section AWG, min. | AWG 20 | Wire cross-section, solid, max. | 4 mm ² |
| Wire cross-section, solid, min. | 0.5 mm ² | Wire connection cross section, finely stranded, max. | 4 mm ² |
| Wire connection cross section, finely stranded, min. | 0.5 mm ² | Conductor cross-section, max. | 4 mm ² |
| Conductor cross-section, min. | 0.5 mm ² | Basic material | Copper alloy |
| BG | 8 | | |

Classifications

| | | | |
|-------------|-------------|-------------|-------------|
| ETIM 8.0 | EC000438 | ETIM 9.0 | EC000438 |
| ETIM 10.0 | EC000438 | ECLASS 14.0 | 27-44-02-05 |
| ECLASS 15.0 | 27-44-02-05 | | |

HDC HEE 64 MC

Weidmüller Interface GmbH & Co. KG
 Klingenbergstraße 26
 D-32758 Detmold
 Germany

www.weidmueller.com

Accessories

Crimp contacts HE



Crimps provide a electrical and mechanical connection between wire and contact that is both secure and reliable. The optimal crimp connection is gas-tight and corrosion-resistant.

General ordering data

| | | |
|------------|----------------------------|---|
| Type | HDC-C-HE-SM0.5AG | Version |
| Order No. | 1200500000 | Heavy-duty connectors, Crimp contact, HE, HEE, HQ, MixMate, Male, |
| GTIN (EAN) | 4008190159627 | Conductor cross-section, max.: 0.5, turned, Copper alloy |
| Qty. | 100 ST | |
| Type | HDC-C-HE-SM0.75-1.00AG | Version |
| Order No. | 1200600000 | Heavy-duty connectors, Crimp contact, HE, HEE, HQ, MixMate, Male, |
| GTIN (EAN) | 4008190171308 | Conductor cross-section, max.: 1, turned, Copper alloy |
| Qty. | 100 ST | |
| Type | HDC-C-HE-SM1.5AG | Version |
| Order No. | 1200700000 | Heavy-duty connectors, Crimp contact, HE, HEE, HQ, MixMate, Male, |
| GTIN (EAN) | 4008190074920 | Conductor cross-section, max.: 1.5, turned, Copper alloy |
| Qty. | 100 ST | |
| Type | HDC-C-HE-SM2.5AG | Version |
| Order No. | 1200800000 | Heavy-duty connectors, Crimp contact, HE, HEE, HQ, MixMate, Male, |
| GTIN (EAN) | 4008190131913 | Conductor cross-section, max.: 2.5, turned, Copper alloy |
| Qty. | 100 ST | |
| Type | HDC-C-HE-SM4.0AG | Version |
| Order No. | 1200900000 | Heavy-duty connectors, Crimp contact, HE, HEE, HQ, MixMate, Male, |
| GTIN (EAN) | 4008190115906 | Conductor cross-section, max.: 4, turned, Copper alloy |
| Qty. | 100 ST | |
| Type | HDC-C-HE-SM0.5AU | Version |
| Order No. | 1651420000 | Heavy-duty connectors, Crimp contact, HE, HEE, HQ, MixMate, Male, |
| GTIN (EAN) | 4008190400095 | Conductor cross-section, max.: 0.5, turned, Copper alloy |
| Qty. | 100 ST | |
| Type | HDC-C-HE-SM0.75-1.00AU | Version |
| Order No. | 1651430000 | Heavy-duty connectors, Crimp contact, HE, HEE, HQ, MixMate, Male, |
| GTIN (EAN) | 4008190400101 | Conductor cross-section, max.: 1, turned, Copper alloy |
| Qty. | 100 ST | |
| Type | HDC-C-HE-SM1.5AU | Version |
| Order No. | 1651440000 | Heavy-duty connectors, Crimp contact, HE, HEE, HQ, MixMate, Male, |
| GTIN (EAN) | 4008190400118 | Conductor cross-section, max.: 1.5, turned, Copper alloy |
| Qty. | 100 ST | |
| Type | HDC-C-HE-SM2.5AU | Version |
| Order No. | 1651450000 | Heavy-duty connectors, Crimp contact, HE, HEE, HQ, MixMate, Male, |
| GTIN (EAN) | 4008190400125 | Conductor cross-section, max.: 2.5, turned, Copper alloy |
| Qty. | 100 ST | |
| Type | HDC-C-HE-SM4.0AU | Version |
| Order No. | 1651460000 | Heavy-duty connectors, Crimp contact, HE, HEE, HQ, MixMate, Male, |
| GTIN (EAN) | 4008190400132 | Conductor cross-section, max.: 4, turned, Copper alloy |
| Qty. | 100 ST | |

HDC HEE 64 MC

Weidmüller Interface GmbH & Co. KG
 Klingenbergstraße 26
 D-32758 Detmold
 Germany

www.weidmueller.com

Accessories

| | | | |
|------------|----------------------------|---|--|
| Type | HDC-C-HE-SM4.65AU | Version | |
| Order No. | 1116540000 | Heavy-duty connectors, Crimp contact, HE, HEE, HQ, MixMate, Male, | |
| GTIN (EAN) | 4032248897261 | Conductor cross-section, max.: 4.65, turned, Copper alloy | |
| Qty. | 100 ST | | |

HE

Various accessories are available for our inserts. This includes coding elements for the inserts.



General ordering data

| | | | |
|------------|----------------------------|---|--|
| Type | HDC HE CP | Version | |
| Order No. | 1003240000 | Heavy-duty connectors, Accessories, Coding System | |
| GTIN (EAN) | 4032248698233 | | |
| Qty. | 100 ST | | |

DSTV

Various accessories are available for our inserts. This includes coding elements for the inserts.



General ordering data

| | | | |
|------------|----------------------------|--|--|
| Type | DSTV COST4 | Version | |
| Order No. | 1471300000 | Heavy-duty connectors, Accessories, Coding System | |
| GTIN (EAN) | 4008190017354 | | |
| Qty. | 100 ST | | |
| Type | DSTV COBU5 | Version | |
| Order No. | 1471500000 | Heavy-duty connectors, Accessories, Coding element | |
| GTIN (EAN) | 4008190178543 | | |
| Qty. | 100 ST | | |

HDC HEEE 64 MC

Weidmüller Interface GmbH & Co. KG
 Klingenbergstraße 26
 D-32758 Detmold
 Germany

www.weidmueller.com

Accessories

Crimping tools



Crimping tools for turned contacts

- Ratchet guarantees precise crimping
- Release option in the event of incorrect operation
- With stop for exact positioning of the contacts.

General ordering data

| | | | |
|------------|----------------------------|---------|---|
| Type | CTX CM 1.6/2.5 | Version | |
| Order No. | 9018490000 | Version | Pressing tool, Crimping tool for contacts, 0.14mm ² , 4mm ² , W crimp |
| GTIN (EAN) | 4008190884598 | | |
| Qty. | 1 ST | | |

| | | | |
|------------|----------------------------|---------|--|
| Type | CTIN CM 1.6/2.5 | Version | |
| Order No. | 9205430000 | Version | Pressing tool, Crimping tool for contacts, 0.14mm ² , 6mm ² , 4-indent crimp |
| GTIN (EAN) | 4032248733446 | | |
| Qty. | 1 ST | | |

Contact removal tools



Weidmüller offers a variety of crimping tools, contact removal tools, and fibre optic tools.

General ordering data

| | | | |
|------------|----------------------------|---------|-----------------------------|
| Type | REMOVAL TOOL HE | Version | |
| Order No. | 1866750000 | Version | Tools, Contact Removal Tool |
| GTIN (EAN) | 4032248437078 | | |
| Qty. | 1 ST | | |

Slotted screwdriver



VDE insulated slot-head screwdriver, SDI DIN 7437, ISO 2380/2, drive output acc. to DIN 5264, ISO 2380/1. SoftFinish grip

HDC HEEE 64 MC

Weidmüller Interface GmbH & Co. KG
 Klingenbergstraße 26
 D-32758 Detmold
 Germany

www.weidmueller.com

Accessories

General ordering data

| | | | |
|------------|----------------------------|--------------------------|--|
| Type | SDIS 0.6X3.5X100 | Version | |
| Order No. | 9008390000 | Screwdriver, Screwdriver | |
| GTIN (EAN) | 4032248056354 | | |
| Qty. | 1 ST | | |
| Type | SDS 0.6X3.5X100 | Version | |
| Order No. | 9008330000 | Screwdriver, Screwdriver | |
| GTIN (EAN) | 4032248056286 | | |
| Qty. | 1 ST | | |
| Type | SDIS 0.8X4.0X100 | Version | |
| Order No. | 9008400000 | Screwdriver, Screwdriver | |
| GTIN (EAN) | 4032248056361 | | |
| Qty. | 1 ST | | |
| Type | SDS 0.8X4.0X100 | Version | |
| Order No. | 9008340000 | Screwdriver, Screwdriver | |
| GTIN (EAN) | 4032248056293 | | |
| Qty. | 1 ST | | |

Crosshead screwdriver Phillips



VDE insulated crosshead screwdriver, for Phillips screws, SDIK PH DIN 7438, ISO 8764/2-PH, output to ISO 8764-PH, SoftFinish grip

General ordering data

| | | | |
|------------|----------------------------|--------------------------|--|
| Type | SDIK PH1 | Version | |
| Order No. | 9008570000 | Screwdriver, Screwdriver | |
| GTIN (EAN) | 4032248056569 | | |
| Qty. | 1 ST | | |
| Type | SDK PH1 | Version | |
| Order No. | 9008480000 | Screwdriver, Screwdriver | |
| GTIN (EAN) | 4032248056477 | | |
| Qty. | 1 ST | | |

HDC HEEE 64 MC

Weidmüller Interface GmbH & Co. KG
Klingenbergstraße 26
D-32758 Detmold
Germany

Counterpart

www.weidmueller.com

Size 8



The HEEE series offers high pole crimp inserts for compact and high performance industrial interfaces. It is based on the proven HE technology and enables reliable signal and power transmission in a confined space.

Thanks to the standardized crimp system, processing and contact quality remain consistently stable.

General ordering data

| | | | |
|------------|----------------------------|--|--|
| Type | HDC HEEE 64 FC | Version | |
| Order No. | 2729590000 | HDC insert, Female, 500 V, 16 A, Number of poles: 64, Crimp connection, Installation size: 8 | |
| GTIN (EAN) | 4064675010456 | | |
| Qty. | 1 ST | | |