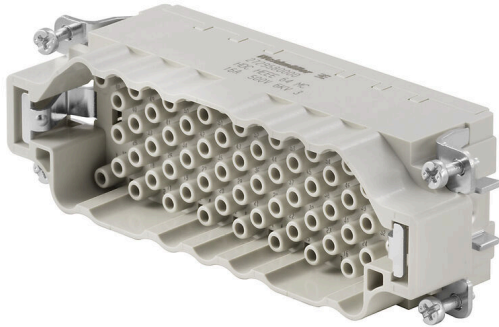


HDC HEEE 64 MC

Weidmüller Interface GmbH & Co. KG
Klingenbergstraße 26
D-32758 Detmold
Germany

www.weidmueller.com

**General ordering data**

Version	HDC insert, Male, 500 V, 16 A, Number of poles: 64, Crimp connection, Installation size: 8
Order No.	2729580000
Type	HDC HEEE 64 MC
GTIN (EAN)	4064675010449
Qty.	1 items

HDC HEEE 64 MC

Weidmüller Interface GmbH & Co. KG
Klingenbergstraße 26
D-32758 Detmold
Germany

www.weidmueller.com

Technical data

Approvals

Approvals



ROHS Conform

UL File Number Search [UL Website](#)

Certificate No. (cURus) E92202

Dimensions and weights

Net weight 68.6 g

Temperatures

Limit temperature -40 °C ... 125 °C

Environmental Product Compliance

RoHS Compliance Status Compliant without exemption

REACH SVHC Potassium perfluorobutane sulfonate 29420-49-3

SCIP 1609748e-c278-4c9b-b3d1-e6215d2988cd

General data

Number of poles 64

Plugging cycles, silver ≥ 500

Plugging cycles, gold ≥ 500

Type of connection Crimp connection

Installation size 8

UL 94 flammability rating V-0

Colour beige

Insulation resistance 1010 Ω

Insulating material PC

Insulating material group IIIa

Type Male

Pollution severity 3

Basic material Copper alloy

Series HEEE

Rated voltage (DIN EN 61984) 500 V

Rated voltage according to UL/CSA 600 V AC/DC

Rated impulse voltage (DIN EN 61984) 6 kV

Rated current (DIN EN 61984) 16 A

Rated current (UR) Wire connection cross section AWG AWG 12

Rated current 18 A

Wire connection cross section AWG AWG 14

Rated current 12 A

Wire connection cross section AWG AWG 16

Rated current 9 A

Wire connection cross section AWG AWG 18

Rated current 7 A

Wire connection cross section AWG AWG 20

Rated current 6 A

Rated current (cUR) Wire connection cross section AWG AWG 12

Rated current 11 A

Wire connection cross section AWG AWG 14

HDC HEEE 64 MC

Weidmüller Interface GmbH & Co. KG
 Klingenbergstraße 26
 D-32758 Detmold
 Germany

www.weidmueller.com

Technical data

	Rated current	8.5 A
	Wire connection cross section AWG	AWG 16
	Rated current	6.5 A
	Wire connection cross section AWG	AWG 18
	Rated current	5.9 A
	Wire connection cross section AWG	AWG 20
	Rated current	4.3 A
Free from halogens	true	
Low smoke acc. DIN EN 45545-2	Yes	
BG	8	
Number of signal contacts	0	
Number of power contacts	64	

Connection data PE

Connection type PE	Screw connection	Stripping length PE connection	10 mm
--------------------	------------------	--------------------------------	-------

Version

Wire connection cross section AWG, max.	AWG 12	Stripping length, rated connection	7.5 mm
Type of connection	Crimp connection	Installation size	8
Wire connection cross section AWG, min.	AWG 20	Wire cross-section, solid, max.	4 mm ²
Wire cross-section, solid, min.	0.5 mm ²	Wire connection cross section, finely stranded, max.	4 mm ²
Wire connection cross section, finely stranded, min.	0.5 mm ²	Conductor cross-section, max.	4 mm ²
Conductor cross-section, min.	0.5 mm ²	Basic material	Copper alloy
BG	8		

Classifications

ETIM 8.0	EC000438	ETIM 9.0	EC000438
ETIM 10.0	EC000438	ECLASS 14.0	27-44-02-05
ECLASS 15.0	27-44-02-05		