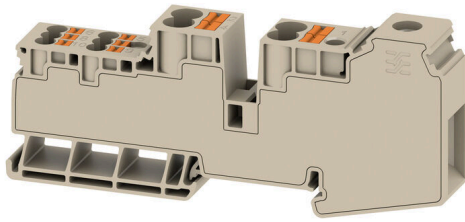


## AWPD 35 4X6/6X2.5

**Weidmüller Interface GmbH & Co. KG**  
Klingenbergstraße 26  
D-32758 Detmold  
Germany

[www.weidmueller.com](http://www.weidmueller.com)



Our feed-in terminal blocks in combination with cross-connections offer the possibility of flexible potential distribution on terminal blocks with a different rated cross-section.

### General ordering data

|            |  |
|------------|--|
| Version    | Potential distributor terminal, Screw connection, dark beige, 35 mm <sup>2</sup> , 110 A, 1000 V, Number of connections: 11, Number of levels: 1 |
| Order No.  | <a href="#">2728620000</a>   |
| Type       | AWPD 35 4X6/6X2.5  |
| GTIN (EAN) | 4050118801125  |
| Qty.       | 20 items   |

## AWPD 35 4X6/6X2.5

Weidmüller Interface GmbH & Co. KG  
Klingenbergstraße 26  
D-32758 Detmold  
Germany

www.weidmueller.com

## Technical data

## Approvals

Approvals



ROHS Conform

UL File Number Search [UL Website](#)

Certificate No. (cURus) E60693

## Dimensions and weights

|            |           |                 |             |
|------------|-----------|-----------------|-------------|
| Depth      | 51.6 mm   | Depth (inches)  | 2.0315 inch |
| Height     | 117.93 mm | Height (inches) | 4.6429 inch |
| Width      | 16.2 mm   | Width (inches)  | 0.6378 inch |
| Net weight | 80 g      |                 |             |

## Temperatures

|                                  |                |                                  |                |
|----------------------------------|----------------|----------------------------------|----------------|
| Storage temperature              | -25 °C...55 °C | Ambient temperature              | -60 °C...65 °C |
| Continuous operating temp., min. | -60 °C         | Continuous operating temp., max. | 110 °C         |

## Environmental Product Compliance

|                        |                             |
|------------------------|-----------------------------|
| RoHS Compliance Status | Compliant without exemption |
| REACH SVHC             | No SVHC above 0.1 wt%       |

## Material data

|                                |        |                           |            |
|--------------------------------|--------|---------------------------|------------|
| Basic material                 | Wemid  | Colour                    | dark beige |
| Colour of operational elements | orange | UL 94 flammability rating | V-0        |

## System specifications

|                                     |  |                               |       |
|-------------------------------------|--|-------------------------------|-------|
| Version                             | Hybrid terminal, Potential distributor | End cover plate required      | No    |
| Number of potentials                | 1                                      | Number of levels              | 1     |
| Number of clamping points per level | 11                                     | Number of potentials per tier | 1     |
| Levels cross-connected internally   | No                                     | Mounting rail                 | TS 35 |
| N-function                          | No                                     | PE function                   | No    |
| PEN function                        | No                                     |                               |       |

## Additional technical data

|                          |        |                  |       |
|--------------------------|--------|------------------|-------|
| Open sides               | closed | Snap-on          | Yes   |
| Explosion-tested version | No     | Type of mounting | TS 35 |

## Conductors for clamping (additional connection)

|  |                     |   |                    |
|--|---------------------|---|--------------------|
| Connection direction additional connection | top                 | Clamping range, further connection, max.  | 6 mm <sup>2</sup>  |
| Clamping range, further connection, min.   | 0.5 mm <sup>2</sup> | Conductor cross-section, flexible plus plastic collar DIN 46228/1, further connection, max. | 10 mm <sup>2</sup> |

## AWPD 35 4X6/6X2.5

**Weidmüller Interface GmbH & Co. KG**

Klingenbergstraße 26  
D-32758 Detmold  
Germany

www.weidmueller.com

## Technical data

|   |                     |   |                     |
|---|---------------------|---|---------------------|
| Conductor cross-section, flexible plus plastic collar DIN 46228/1, further connection, min. | 0.5 mm <sup>2</sup> | Conductor cross-section, flexible, further 0.5 mm <sup>2</sup> connection, min. |                     |
| Number of connections, additional connection  | 4                   | Rated cross-section, further connection   | 6 mm <sup>2</sup>   |
| Blade size, additional connection   | 1.0 x 5.5 mm        | Cross-section for connected wire, multi-core, further connection, min.          | 0.5 mm <sup>2</sup> |
| Cross-section for connected wire, multi-core, further connection, max.                      | 10 mm <sup>2</sup>  | Cross-section for connected wire, AWG, additional connection, min.              | AWG 20              |
| Cross-section for connected wire, solid-core, further connection, min.                      | 0.5 mm <sup>2</sup> | Cross-section for connected wire, solid-core, further connection, max.          | 10 mm <sup>2</sup>  |
| Connection type, additional connection  | PUSH IN             | Cross-section for connected wire, flexible, further connection, max.            | 10 mm <sup>2</sup>  |
| Cross-section for connected wire, AWG, additional connection, max.                          | AWG 10              | Stripping length, additional connection   | 12 mm               |

### Conductors for clamping (rated connection)

|   |  |                    |
|---|--|--------------------|
| Gauge to IEC 60947-1  | B9                                     |                    |
| Wire connection cross section AWG, max.   | AWG 14                                 |                    |
| Connection direction  | top                                    |                    |
| Tightening torque, max.   | 2.5 Nm                                 |                    |
| Tightening torque, min.   | 2.5 Nm                                 |                    |
| Stripping length  | 17 mm                                  |                    |
| Type of connection 2  | PUSH IN                                |                    |
| Type of connection  | Screw connection                       |                    |
| Number of connections   | 11                                     |                    |
| Clamping range, max.  | 35 mm <sup>2</sup>                     |                    |
| Clamping range, min.  | 1.5 mm <sup>2</sup>                    |                    |
| Clamping screw  | M 6                                    |                    |
| Blade size  | 1 x 5.5                                |                    |
| Wire connection cross section AWG, min.   | AWG 2                                  |                    |
| Wire connection cross-section, finely stranded with wire-end ferrules DIN 46228/4, max. | 35 mm <sup>2</sup>                     |                    |
| Wire connection cross-section, finely stranded with wire-end ferrules DIN 46228/4, min. | 1.5 mm <sup>2</sup>                    |                    |
| Wire connection cross-section, finely stranded with wire-end ferrules DIN 46228/1, max. | 35 mm <sup>2</sup>                     |                    |
| Wire connection cross-section, finely stranded with wire-end ferrules DIN 46228/1, min. | 1.5 mm <sup>2</sup>                    |                    |
| Wire connection cross section, finely stranded, max.                                    | 35 mm <sup>2</sup>                     |                    |
| Wire connection cross section, finely stranded, min.                                    | 1.5 mm <sup>2</sup>                    |                    |
| Connection cross-section, stranded, max.  | 35 mm <sup>2</sup>                     |                    |
| Connection cross-section, stranded, min.  | 1.5 mm <sup>2</sup>                    |                    |
| Twin wire-end ferrules, max.  | 6 mm <sup>2</sup>                      |                    |
| Twin wire-end ferrules, min.  | 1.5 mm <sup>2</sup>                    |                    |
| Wire connection cross-section, solid core, max.   | 35 mm <sup>2</sup>                     |                    |
| Wire connection cross-section, solid core, min.   | 1.5 mm <sup>2</sup>                    |                    |
| Clampable conductor   | Connection specification               |                    |
|   | Cross-section for conductor connection | Screw connection   |
|   |  | min.               |
|   | max.                                   | 35 mm <sup>2</sup> |

**AWPD 35 4X6/6X2.5**

**Weidmüller Interface GmbH & Co. KG**  
 Klingenbergstraße 26  
 D-32758 Detmold  
 Germany

www.weidmueller.com

**Technical data**

|  |                                      |                     |
|--|--------------------------------------|---------------------|
|  | nominal                              | 35 mm <sup>2</sup>  |
|  | min.                                 | 1.5 mm <sup>2</sup> |
|  | max.                                 | 35 mm <sup>2</sup>  |
|  | nominal                              | 35 mm <sup>2</sup>  |
|  | min.                                 | 1.5 mm <sup>2</sup> |
|  | max.                                 | 35 mm <sup>2</sup>  |
|  | nominal                              | 35 mm <sup>2</sup>  |
|  | min.                                 | 1.5 mm <sup>2</sup> |
|  | max.                                 | 35 mm <sup>2</sup>  |
|  | nominal                              | 35 mm <sup>2</sup>  |
| wire end ferrule                       | Number of conductors / contact point | 1                   |
|  | Stripping length                     | min. 17 mm          |
|  |                                      | max. 17 mm          |
|  |                                      | nominal 17 mm       |
|  | Tightening torque                    | min. 2.5 Nm         |
|  |                                      | max. 2.5 Nm         |
|  |                                      | nominal 2.5 Nm      |
|  | Number of conductors / contact point | 1                   |
|  | Number of conductors / contact point | 1                   |
|  | Stripping length                     | min. 17 mm          |
|  |                                      | max. 17 mm          |
|  |                                      | nominal 17 mm       |
|  | Tightening torque                    | min. 2.5 Nm         |
|  |                                      | max. 2.5 Nm         |
|  |                                      | nominal 2.5 Nm      |
|  | Number of conductors / contact point | 1                   |
|  | Stripping length                     | min. 17 mm          |
|  |                                      | max. 17 mm          |
|  |                                      | nominal 17 mm       |
|  | Tightening torque                    | min. 2.5 Nm         |
|  |                                      | max. 2.5 Nm         |
|  |                                      | nominal 2.5 Nm      |
| Cross-section for conductor connection | min.                                 | 0.5 mm <sup>2</sup> |
|  | max.                                 | 6 mm <sup>2</sup>   |
|  | nominal                              | 6 mm <sup>2</sup>   |
|  | min.                                 | 0.5 mm <sup>2</sup> |
|  | max.                                 | 6 mm <sup>2</sup>   |
|  | nominal                              | 6 mm <sup>2</sup>   |
|  | min.                                 | 0.5 mm <sup>2</sup> |
|  | max.                                 | 6 mm <sup>2</sup>   |
|  | nominal                              | 6 mm <sup>2</sup>   |
|  | min.                                 | 0.5 mm <sup>2</sup> |
|  | max.                                 | 6 mm <sup>2</sup>   |
|  | nominal                              | 6 mm <sup>2</sup>   |
| wire end ferrule                       | Number of conductors / contact point | 4                   |
|  | Stripping length                     | min. 12 mm          |
|  |                                      | max. 12 mm          |
|  |                                      | nominal 12 mm       |

**AWPD 35 4X6/6X2.5**

**Weidmüller Interface GmbH & Co. KG**  
 Klingenbergstraße 26  
 D-32758 Detmold  
 Germany

www.weidmueller.com

**Technical data**

|  |                                      |                     |
|--|--------------------------------------|---------------------|
|  | Number of conductors / contact point | 4                   |
|  | Stripping length                     | min. 12 mm          |
|  |                                      | max. 12 mm          |
|  |                                      | nominal 12 mm       |
|  | Number of conductors / contact point | 4                   |
|  | Stripping length                     | min. 12 mm          |
|  |                                      | max. 12 mm          |
|  |                                      | nominal 12 mm       |
| Cross-section for conductor connection | min.                                 | 0.5 mm <sup>2</sup> |
|  | max.                                 | 2.5 mm <sup>2</sup> |
|  | nominal                              | 2.5 mm <sup>2</sup> |
|  | min.                                 | 0.5 mm <sup>2</sup> |
|  | max.                                 | 2.5 mm <sup>2</sup> |
|  | nominal                              | 2.5 mm <sup>2</sup> |
|  | min.                                 | 0.5 mm <sup>2</sup> |
|  | max.                                 | 2.5 mm <sup>2</sup> |
|  | nominal                              | 2.5 mm <sup>2</sup> |
|  | min.                                 | 0.5 mm <sup>2</sup> |
|  | max.                                 | 2.5 mm <sup>2</sup> |
|  | nominal                              | 2.5 mm <sup>2</sup> |
| wire end ferrule                       | Number of conductors / contact point | 4                   |
|  | Stripping length                     | min. 10 mm          |
|  |                                      | max. 10 mm          |
|  |                                      | nominal 10 mm       |
|  | Number of conductors / contact point | 4                   |
|  | Stripping length                     | min. 10 mm          |
|  |                                      | max. 10 mm          |
|  |                                      | nominal 10 mm       |
|  | Number of conductors / contact point | 4                   |
|  | Stripping length                     | min. 10 mm          |
|  |                                      | max. 10 mm          |
|  |                                      | nominal 10 mm       |

**General**

|   |               |   |       |
|---|---------------|---|-------|
| Wire connection cross section AWG, max. | AWG 14        | Wire connection cross section AWG, min. | AWG 2 |
| Standards                               | IEC 60947-7-1 | Mounting rail                           | TS 35 |

**Rating data**

|                                 |                    |  |         |
|---------------------------------|--------------------|--|---------|
| Rated cross-section             | 35 mm <sup>2</sup> | Rated voltage                                | 1000 V  |
| Rated AC voltage                | 1000 V             | Rated DC voltage                             | 1000 V  |
| Nominal current                 | 110 A              | Current at maximum wires                     | 110 A   |
| Standards                       | IEC 60947-7-1      | Volume resistance according to IEC 60947-7-x | 0.26 mΩ |
| Rated impulse withstand voltage | 8 kV               | Power loss in accordance with IEC 60947-7-x  | 4.00 W  |
| Surge voltage category          | III                | Pollution severity                           | 3       |

**AWPD 35 4X6/6X2.5**

**Weidmüller Interface GmbH & Co. KG**  
Klingenbergstraße 26  
D-32758 Detmold  
Germany

[www.weidmueller.com](http://www.weidmueller.com)

**Technical data****UL rating data**

|  |        |  |        |
|--|--------|--|--------|
| Conductor size Factory wiring max. (cURus) | 2 AWG  | Certificate No. (cURus)                    | E60693 |
| Conductor size Field wiring min. (cURus)   | 14 AWG | Conductor size Factory wiring min. (cURus) | 14 AWG |
| Conductor size Field wiring max. (cURus)   | 2 AWG  |  |        |

**Classifications**

|             |             |             |             |
|-------------|-------------|-------------|-------------|
| ETIM 8.0    | EC000897    | ETIM 9.0    | EC000897    |
| ETIM 10.0   | EC000897    | ECLASS 14.0 | 27-25-01-19 |
| ECLASS 15.0 | 27-25-01-19 |             |             |

**Drawings**

