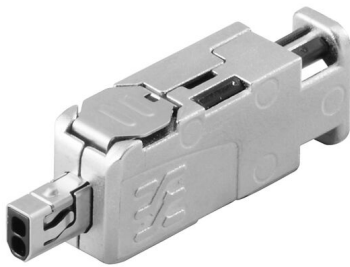


IE-PS-SPO-S-FH-180

Weidmüller Interface GmbH & Co. KG
Klingenbergstraße 26
D-32758 Detmold
Germany

www.weidmueller.com



SPElink[®]



Single pair Ethernet is a technology that only requires one pair of wires to transmit data and power.

The resulting benefits will make SPE the preferred network at the field level and beyond. Advantages of Single Pair Ethernet

- Consistent: Single Pair Ethernet enables uniform Ethernet-based communication from the sensor to the cloud
- Future-proof: key technology for Industry 4.0 and IIoT
- Flexible: ranges of up to 1000 m and transmission properties of up to 1 Gbps enable use across applications
- Innovative: lighter, less space required, and reduced installation effort

General ordering data

Version	SPE fieldattachable plug, SPE-Plug acc. to IEC 63171-2, IDC, 2-core, IP20
Order No.	2726040000
Type	IE-PS-SPO-S-FH-180
GTIN (EAN)	4050118810790
Qty.	1 items

IE-PS-SP0-S-FH-180

Weidmüller Interface GmbH & Co. KG

Klingenbergstraße 26
D-32758 Detmold
Germany

www.weidmueller.com

Technical data

Approvals

ROHS	Conform
------	---------

Dimensions and weights

Net weight	8.9 g
------------	-------

Temperatures

Storage temperature	Operating temperature	-40 °C...85 °C
Installation temperature		

Environmental Product Compliance

RoHS Compliance Status	Compliant without exemption
REACH SVHC	No SVHC above 0.1 wt%

General data

Material locking lever	Stainless steel	Material strain relief	PC UL 94 V0
Connection 1	SPE-Plug acc. to IEC 63171-2	Connection 2	IDC
Composition	field attachable	Wiring	2-core
UL 94 flammability rating	V-0	Colour	silver
Housing main material	zinc diecast nickel-plated	Insulation cross-section, min.	0.85 mm
Insulation cross-section, max.	1.6 mm	Category	T1-B
Contact material	Bronze tin-plated	Contact surface	Gold-plated
Connection diameter, solid	0.41...0.64 mm	Conductor connection cross-section, solid (AWG)	AWG 24...AWG 22
Connection diameter, flexible	0.48...0.76 mm	Conductor connection cross-section, flexible (AWG)	AWG 26...AWG 22
Conductor connection cross-section, extremely flexible	0.51	Conductor connection cross-section, extremely flexible (AWG)	AWG 26...AWG 22
Sheath diameter, min.	3.6 mm	Sheath diameter, max.	5.7 mm
Shielding material	bronze tin-plated	Protection degree	IP20
Plugging cycles	750	Material insulator	PC UL94 V0
Ability to reconnect	≤ 4 cycles (with the same cross-section)		

Electrical properties

Contact resistance	≤ 20 mΩ	
Dielectric strength, contact / shield	≥ 1500 V DC	
Dielectric strength, contact / contact	≥ 1000 V DC	
Insulation resistance	≥ 500 MΩ	
Rated current	4 A	
Current-carrying capacity	Current-carrying capacity	1.4 A
	Temperature	60 °C
PoE / PoE+	PoDL acc. to IEEE 802.3bu / cg	

General standards

Connector standard	IEC 63171-2	Application-specific communication cable facilities	ISO/IEC 11801-1 Amd.1, ISO/IEC 11801-3 Amd.1, ISO/IEC 11801-6 Amd.1
Network standard	IEEE 802.3cg (10BaseT1), IEEE 802.3bw (100)		

Technical data

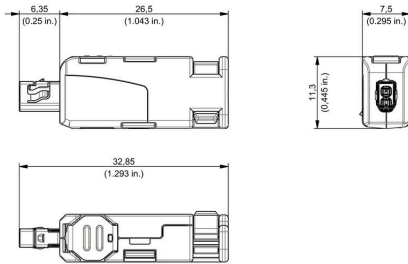
BaseT1), IEEE 802.3bp
(1000 BaseT1)

Classifications

ETIM 8.0	EC001121	ETIM 9.0	EC001121
ETIM 10.0	EC001121	ECLASS 14.0	27-44-01-90
ECLASS 15.0	27-44-01-90		

Drawings

Detailed drawing



Pinning

