

## IE-PCB-SPE-P-90V2.1-THR RL

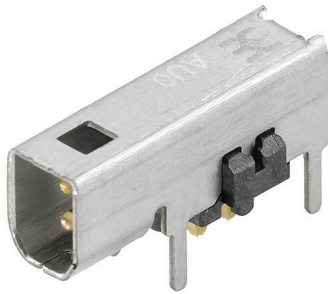
Weidmüller Interface GmbH & Co. KG

Klingenbergstraße 26

D-32758 Detmold

Germany

[www.weidmueller.com](http://www.weidmueller.com)



SPElink®



### Single Pair Ethernet PCB sockets

Single pair Ethernet is a technology that only requires one pair of wires to transmit data and power.

The resulting benefits will make SPE the preferred network at the field level and beyond.

Advantages of Single Pair Ethernet:

- Consistent: Single Pair Ethernet enables uniform Ethernet-based communication from the sensor to the cloud
- Future-proof: key technology for Industry 4.0 and IIoT
- Flexible: ranges of up to 1000 m and transmission properties of up to 1 Gbps enable use across applications
- Innovative: lighter, less space required, and reduced installation effort

### General ordering data

Version	PCB plug-in connector, SPE (Single Pair Ethernet), Clip-on flange, THT/THR solder connection, 1.80 mm, Number of poles: 2, 90°, Solder pin length (l): 2.1 mm, Ni/Au, silver, Tape
Order No.	<a href="#">2726010000</a>
Type	IE-PCB-SPE-P-90V2.1-THR RL
GTIN (EAN)	4050118810769
Qty.	100 items
Packaging	Tape
Delivery status	This article will no longer be available in the future.
Last order date	2026-06-30T00:00:00+02:00
Alternative product	<a href="#">SPE P20 R1H 2.1 6 N/N TU</a>

Creation date 01.05.2026 01:53:56 MEZ

Catalogue status / Drawings

## IE-PCB-SPE-P-90V2.1-THR RL

Weidmüller Interface GmbH & Co. KG  
Klingenbergstraße 26  
D-32758 Detmold  
Germany

www.weidmueller.com

## Technical data

## Approvals

Approvals



ROHS	Conform
UL File Number Search	<a href="#">UL Website</a>
Certificate No. (cURus)	E316369

## Dimensions and weights

Depth	14.2 mm	Depth (inches)	0.5591 inch
Height	5.95 mm	Height (inches)	0.2343 inch
Width	3.65 mm	Width (inches)	0.1437 inch
Length	14.2 mm	Length (inches)	0.5591 inch
Net weight	3 g		

## Temperatures

Installation temperature

## Environmental Product Compliance

RoHS Compliance Status	Compliant without exemption
REACH SVHC	No SVHC above 0.1 wt%

## System specifications

Number of poles	2	LED	No
Solder pin length (l)	2.1 mm	Mounting onto the PCB	THT/THR solder connection
Pitch in inches (P)	0.071 "	Shielding material	CuSn
Shielding	Yes	Side termination, characteristic	Clip-on flange
Plugging force/pole, max.	3.5 N	Transmission rate	10/100 MBit/s, 1000 MBit/s, 10/100/1000 MBit/s
Pulling force/pole, max.	6.7 N	Type of connection	Solder connection
Category	T1-B	Pitch in mm (P)	1.80 mm
Protection degree	IP20	Plugging cycles	750
Outgoing elbow	90°	Shield surface	tinned
Performance-Category	T1-B 10/100 MBit/s, 1000 MBit/s, 10/100/1000 MBit/s	Soldering process	Reflow soldering, Manual soldering, Wave soldering
Plugging force/pole, min.	9.10 N	Pulling force / pole, min.	3.40 N
Solder pin dimensions	Octagonal	Tolerance of solder pin position	± 0.1 mm

## Electrical properties

Dielectric strength, contact / shield	2250 V DC	Dielectric strength, contact / contact	1000 V DC
Insulation resistance	≥ 500 MΩ	Nominal voltage	72 V
Rated current	4 A	PoE / PoE+	PoDL acc. to IEEE 802.3bu / cg

## Standards

Connector standard	IEC 63171-2
--------------------	-------------

## IE-PCB-SPE-P-90V2.1-THR RL

**Weidmüller Interface GmbH & Co. KG**  
 Klingenbergstraße 26  
 D-32758 Detmold  
 Germany

[www.weidmueller.com](http://www.weidmueller.com)

## Technical data

### Material data

Insulating material	LCP	Colour	silver
Colour chart (similar)	RAL 7001	Insulation resistance	≥ 500 MΩ
Moisture Level (MSL)	1	UL 94 flammability rating	V-0
Contact base material	CuMg	Contact material	Cu-alloy
Contact surface	Ni/Au	Layer structure of solder connection	2...4 μm Ni / ≥ 0.25 μm Au
Layer structure of plug contact	2...4 μm Ni / ≥ 0.25 μm Au	Operating temperature, min.	-40 °C
Operating temperature, max.	85 °C		

### Packing

Packaging	Tape	VPE length	329.00 mm
VPE width	329.00 mm	VPE height	31.00 mm

### Important note

Notes

### Classifications

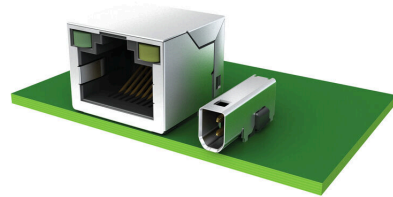
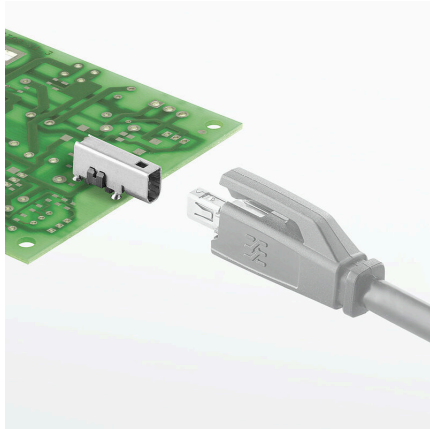
ETIM 8.0	EC002637	ETIM 9.0	EC002637
ETIM 10.0	EC002637	ECLASS 14.0	27-46-02-01
ECLASS 15.0	27-46-02-01		

**IE-PCB-SPE-P-90V2.1-THR RL**

**Weidmüller Interface GmbH & Co. KG**  
Klingenbergstraße 26  
D-32758 Detmold  
Germany

[www.weidmueller.com](http://www.weidmueller.com)

**Drawings**

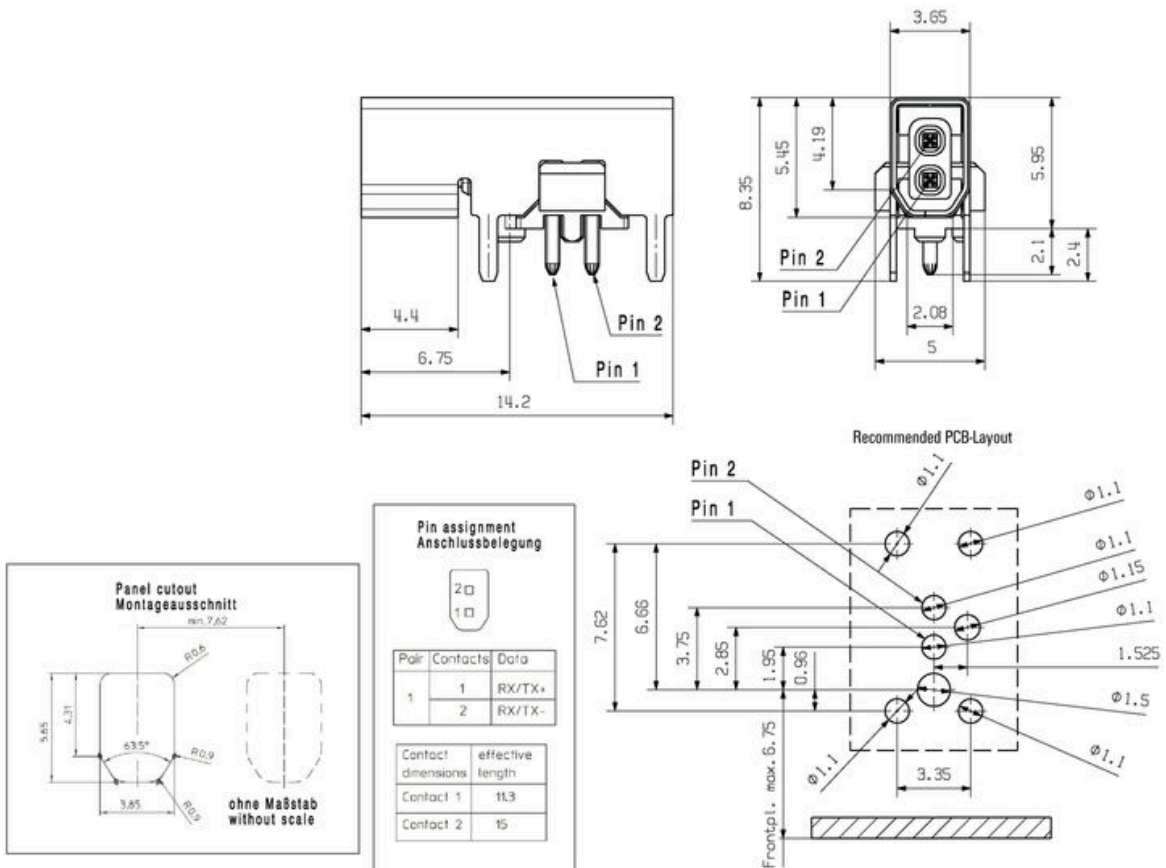


**IE-PCB-SPE-P-90V2.1-THR RL**

**Weidmüller Interface GmbH & Co. KG**  
 Klingenbergstraße 26  
 D-32758 Detmold  
 Germany

**Drawings**

www.weidmueller.com



## IE-PCB-SPE-P-90V2.1-THR RL

**Weidmüller Interface GmbH & Co. KG**  
 Klingenbergstraße 26  
 D-32758 Detmold  
 Germany

www.weidmueller.com

## Counterpart

## IP20 Patch Cable



Single pair Ethernet is a technology that only requires one pair of wires to transmit data and power. The resulting benefits will make SPE the preferred network at the field level and beyond. Advantages of Single Pair Ethernet

- Consistent: Single Pair Ethernet enables uniform Ethernet-based communication from the sensor to the cloud
- Future-proof: key technology for Industry 4.0 and IIoT
- Flexible: ranges of up to 1000 m and transmission properties of up to 1 Gbps enable use across applications
- Innovative: lighter, less space required, and reduced installation effort

## General ordering data

Type	IE-S1DS2VE0010T01T01-E	Version
Order No.	<a href="#">2725850010</a>	Patch cable, SPE plug (IEC 63171-2) - IP20 socket contact straight,
GTIN (EAN)	4050118824544	SPE plug (IEC 63171-2) - IP20 socket contact straight, T1-B, PVC, 1 m
Qty.	1 ST	
Type	IE-S1DS2VE0020T01T01-E	Version
Order No.	<a href="#">2725850020</a>	Patch cable, SPE plug (IEC 63171-2) - IP20 socket contact straight,
GTIN (EAN)	4050118825312	SPE plug (IEC 63171-2) - IP20 socket contact straight, T1-B, PVC, 2 m
Qty.	1 ST	
Type	IE-S1DS2VE0030T01T01-E	Version
Order No.	<a href="#">2725850030</a>	Patch cable, SPE plug (IEC 63171-2) - IP20 socket contact straight,
GTIN (EAN)	4050118825329	SPE plug (IEC 63171-2) - IP20 socket contact straight, T1-B, PVC, 3 m
Qty.	1 ST	
Type	IE-S1DS2VE0050T01T01-E	Version
Order No.	<a href="#">2725850050</a>	Patch cable, SPE plug (IEC 63171-2) - IP20 socket contact straight,
GTIN (EAN)	4050118825336	SPE plug (IEC 63171-2) - IP20 socket contact straight, T1-B, PVC, 5 m
Qty.	1 ST	