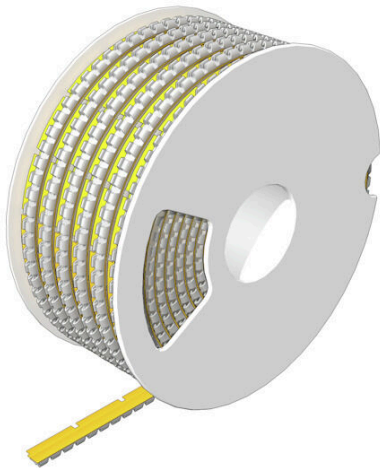


## SFM 2/24 1.8-2.5 MM GE

**Weidmüller Interface GmbH & Co. KG**  
Klingenbergstraße 26  
D-32758 Detmold  
Germany

[www.weidmueller.com](http://www.weidmueller.com)



With the comprehensive MultiMark product family, you can achieve optimally structured and sustainable marking in every control cabinet. An example of this is our new SlimFix wire marker, which can be printed and snapped on particularly quickly. At the same time, they meet the highest requirements for vibration and shock resistance. The wire markers have an open design and can be easily and quickly installed before or after the wiring process.

### General ordering data

Version	Conductor and cable markers, 1.8 - 2.5 mm, 24 x 4.6 mm, yellow
Order No.	<a href="#">2719140000</a>
Type	SFM 2/24 1.8-2.5 MM GE
GTIN (EAN)	4050118888171
Qty.	700 items

## SFM 2/24 1.8-2.5 MM GE

**Weidmüller Interface GmbH & Co. KG**  
 Klingenbergstraße 26  
 D-32758 Detmold  
 Germany

www.weidmueller.com

## Technical data

## Approvals

ROHS	Conform
------	---------

## Dimensions and weights

Height	24 mm	Height (inches)	0.9449 inch
Width	4.6 mm	Width (inches)	0.1811 inch
Net weight	0.42 g		

## Environmental Product Compliance

RoHS Compliance Status	Compliant without exemption
REACH SVHC	No SVHC above 0.1 wt%

## General data

Type of printing	neutral	Version	with snap-in foot
Width	4.6 mm	UL 94 flammability rating	V-2
Operating temperature range, max.	90 °C	Operating temperature range, min.	-50 °C
Colour	yellow	Halogen	No
Basic material	PC-ABS, TPU	Printed characters	without
Size of labelling field	3.3 x 21.5 mm	compatible printer	<a href="#">THM MULTIMARK</a>
Number per roll	700		

## Conductor and cable markers

Halogen	No	Conductor cross-section, max.	1.5 mm <sup>2</sup>
Conductor cross-section, min.	0.75 mm <sup>2</sup>	Conductor O.D., max.	2.5 mm
Conductor O.D., min.	1.8 mm	Conductor O.D.	1.8 - 2.5 mm
Cross-section for connected wire	0.75 - 1.5 mm <sup>2</sup>		

## Classifications

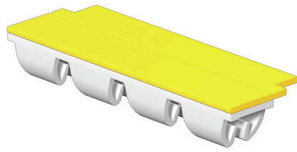
ETIM 8.0	EC001530	ETIM 9.0	EC001530
ETIM 10.0	EC001530	ECLASS 14.0	27-28-11-02
ECLASS 15.0	27-28-11-02		

**SFM 2/24 1.8-2.5 MM GE**

**Weidmüller Interface GmbH & Co. KG**  
Klingenbergstraße 26  
D-32758 Detmold  
Germany

**Drawings**

[www.weidmueller.com](http://www.weidmueller.com)



## SFM 2/24 1.8-2.5 MM GE

**Weidmüller Interface GmbH & Co. KG**  
Klingenbergstraße 26  
D-32758 Detmold  
Germany

[www.weidmueller.com](http://www.weidmueller.com)

## Accessories

### Ink ribbons

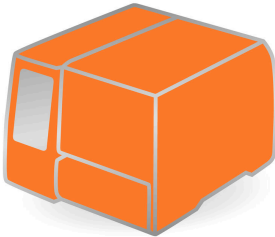


These printers produce excellent printing results thanks to the thermal transfer technique. Different materials and the user-friendly printing system under Windows optimise marking efforts.

#### General ordering data

Type	RIBBON MM-TB 25/360 SW	Version	
Order No.	<a href="#">2005090000</a>	Ink ribbon	
GTIN (EAN)	4050118390216		
Qty.	1 ST		

### THM MULTIMARK



These printers produce excellent printing results thanks to the thermal transfer technique. Different materials and the user-friendly printing system under Windows optimise marking efforts.

#### General ordering data

Type	MULTIMARK ROLLER SFM 2	Version	
Order No.	<a href="#">2786210000</a>		
GTIN (EAN)	4064675063230		
Qty.	1 ST		