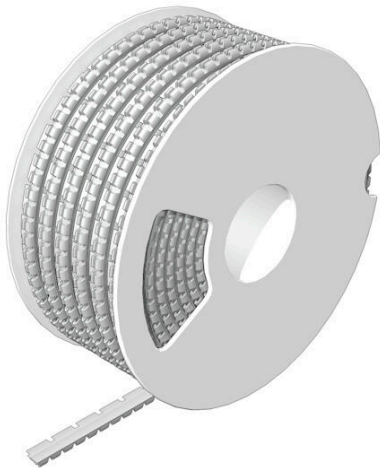


**SFM 2/12 1.8-2.5 MM WS**

**Weidmüller Interface GmbH & Co. KG**  
Klingenbergstraße 26  
D-32758 Detmold  
Germany

[www.weidmueller.com](http://www.weidmueller.com)



With the comprehensive MultiMark product family, you can achieve optimally structured and sustainable marking in every control cabinet. An example of this is our new SlimFix wire marker, which can be printed and snapped on particularly quickly. At the same time, they meet the highest requirements for vibration and shock resistance. The wire markers have an open design and can be easily and quickly installed before or after the wiring process.

**General ordering data**

Version	Conductor and cable markers, 1.8 - 2.5 mm, 12 x 4.6 mm, white
Order No.	<a href="#">2719090000</a>
Type	SFM 2/12 1.8-2.5 MM WS
GTIN (EAN)	4050118888126
Qty.	1400 items

**SFM 2/12 1.8-2.5 MM WS**

**Weidmüller Interface GmbH & Co. KG**  
 Klingenbergstraße 26  
 D-32758 Detmold  
 Germany

www.weidmueller.com

**Technical data**

**Approvals**

ROHS Conform

**Dimensions and weights**

Height	12 mm	Height (inches)	0.4724 inch
Width	4.6 mm	Width (inches)	0.1811 inch
Net weight	0.21 g		

**Environmental Product Compliance**

RoHS Compliance Status Compliant without exemption  
 REACH SVHC No SVHC above 0.1 wt%

**General data**

Type of printing	neutral	Version	with snap-in foot
Width	4.6 mm	UL 94 flammability rating	V-2
Operating temperature range, max.	90 °C	Operating temperature range, min.	-50 °C
Colour	white	Halogen	No
Basic material	PC-ABS, TPU	Printed characters	without
Size of labelling field	3.3 x 9.5 mm	compatible printer	<a href="#">THM MULTIMARK</a>
Number per roll	1400		

**Conductor and cable markers**

Halogen	No	Conductor cross-section, max.	1.5 mm <sup>2</sup>
Conductor cross-section, min.	0.75 mm <sup>2</sup>	Conductor O.D., max.	2.5 mm
Conductor O.D., min.	1.8 mm	Conductor O.D.	1.8 - 2.5 mm
Cross-section for connected wire	0.75 - 1.5 mm <sup>2</sup>		

**Classifications**

ETIM 8.0	EC001530	ETIM 9.0	EC001530
ETIM 10.0	EC001530	ECLASS 14.0	27-28-11-02
ECLASS 15.0	27-28-11-02		

