

## CH-HIAC-HIAD-06-0200-AC

**Weidmüller Interface GmbH & Co. KG**

Klingenbergstraße 26

D-32758 Detmold

Germany

[www.weidmueller.com](http://www.weidmueller.com)



Product similar to illustration

The increasingly networked industrial world goes hand in hand with the modularization of machines and systems. Functions from the control cabinet are increasingly being moved to field level, which drives up the amount of cabling required.

Our ready-for-connection cable assemblies can be used wiring in field level and for transmitting data or power in various applications. The Plug & Produce solution by Weidmüller are fully tested and will lead to simplification of assembly on your machine. This allows you to focus on your core competencies and further increase your efficiency.

With our broad product portfolio of certified components, we offer you a wide diversification so that we can provide you the perfect solution for your application.

If you cannot find the cable assembly you are looking for despite our continuously growing portfolio, we can also offer you different length variants and customer-specific solutions.

### General ordering data

Version	Heavy duty connector assemblies, Pin, Socket connector, LAPP Ölflex Classic 110, Shielded: No, Number of poles: 6
Order No.	<a href="#">2712310200</a>
Type	CH-HIAC-HIAD-06-0200-AC
GTIN (EAN)	4050118751116
Qty.	1 items

## CH-HIAC-HIAD-06-0200-AC

**Weidmüller Interface GmbH & Co. KG**  
 Klingenbergstraße 26  
 D-32758 Detmold  
 Germany

www.weidmueller.com

## Technical data

### Approvals

ROHS	Conform
------	---------

### Dimensions and weights

Net weight	1406.64 g
------------	-----------

### Temperatures

Limit temperature	-40 °C ... 80 °C
-------------------	------------------

### Environmental Product Compliance

RoHS Compliance Status	Compliant with exemption
RoHS Exemption (if applicable/known)	6c
REACH SVHC	Lead 7439-92-1, Potassium perfluorobutane sulfonate 29420-49-3
SCIP	81ca46c4-2930-4739-aa54-e07d33c98f2c

### General Technical Data

Number of poles	6	Pin arrangement	1:1, numbered cores
Nominal voltage	400 V	Nominal current	35 A
Protection degree	IP65		

### Technical Specifications Connector

Connector	Connector description	Connector 1
	Cable entry	straight
	Housing main material	Diecast aluminium
	Number of poles	6
	Series	HSB
	Size	6
	Type	Pin
	Individual components connector	<a href="#">HDC 16B TOBU 1M25G</a> , <a href="#">HDC HSB 6 MS</a> , <a href="#">H4.0/18D GR</a> , <a href="#">VGM25-MS68 11-20 BG</a>
	Connector description	Connector 2
	Cable entry	straight
	Housing main material	Diecast aluminium
	Number of poles	6
	Series	HSB
	Size	6
	Type	Female
	Individual components connector	<a href="#">HDC 16B TOBU 1M25G</a> , <a href="#">HDC HSB 6 FS</a> , <a href="#">H4.0/18D GR</a> , <a href="#">VGM25-MS68 11-20 BG</a>

### Technical specifications for cable

Cable length	2 m	Line type	LAPP Ölflex Classic 110
Sheathing colour	black	Resistance to oils	Yes
Core cross-section	4 mm <sup>2</sup>	Number of wires	7
Shielded	No	Halogen	Yes
Insulation	PVC	Temperature range, moving, max.	70 °C
Temperature range, moving, min.	-15 °C	Temperature range, stationary, max.	80 °C
Temperature range, stationary, min.	-40 °C	Bending radius, min., moving	15 x cable diameter
Bending radius, min., stationary	4 x cable diameter	Sheath material	PVC
Outside diameter	15.8 mm		

**Technical data**

**Classifications**

ETIM 8.0	EC001576	ETIM 9.0	EC001576
ETIM 10.0	EC001576	ECLASS 14.0	27-06-04-02
ECLASS 15.0	27-06-04-02		

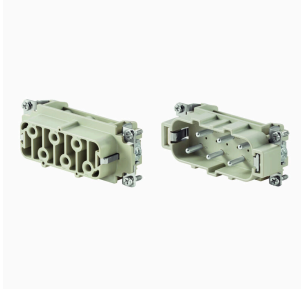
## CH-HIAC-HIAD-06-0200-AC

**Weidmüller Interface GmbH & Co. KG**  
 Klingenbergstraße 26  
 D-32758 Detmold  
 Germany

www.weidmueller.com

## Accessories

## Size 6



The HSB series enables you to carry 35A per contact simultaneously. Assembled with screw connections, for secure and reliable connections. The wire connection level is designed as a screw element. All screw connections are equipped with a wire protection spring.

Number of poles: 6  
 Rated current: 35 A  
 Rated voltage: 400 V  
 Nominal voltage acc. to UL/CSA: 600 V AC/DC

## General ordering data

Type	HDC HSB 6 MS	Version
Order No.	<a href="#">1498700000</a>	HDC insert, Male, 400 V, 35 A, Number of poles: 6, Screw connection, Installation size: 6
GTIN (EAN)	4008190035136	
Qty.	1 ST	
Type	HDC HSB 6 FS	Version
Order No.	<a href="#">1498900000</a>	HDC insert, Female, 400 V, 35 A, Number of poles: 6, Screw connection, Installation size: 6
GTIN (EAN)	4008190071417	
Qty.	1 ST	

## Coupling hood



The special die-cast alloy and the multi-layered surface sealing provide complete protection for the HDC housings. The cleverly designed interlock system is manufactured from stainless steel. This guarantees a long lifespan with high resistance to corrosion and impact. The housing interlock system provides integrated safety. Our unique, patented spring system provides the housing interlock with a secure grip and prevents accidental opening. The laser marking allows for easy and quick identification. Each housing is permanently labelled with a laser marking so that each product can be quickly designated and positioned. Weidmüller RockStar® IP 65 / NEMA Type 4X housings - your first choice for industrial housings with IP 65 protection.

## General ordering data

Type	HDC 16B KBU 1PG21G	Version
Order No.	<a href="#">1657270000</a>	HDC enclosures, Installation size: 6, Protection degree: IP65, in plugged condition, Coupling housing, Side-locking clamp on lower side, Standard, Size of cable entries: PG 21
GTIN (EAN)	4008190410322	
Qty.	1 ST	
Type	HDC 40D KBU 1PG21G	Version
Order No.	<a href="#">1657310000</a>	HDC enclosures, Installation size: 6, Protection degree: IP65, in plugged condition, Coupling housing, Side-locking clamp on lower side, high, Size of cable entries: PG 21
GTIN (EAN)	4008190410360	
Qty.	1 ST	
Type	HDC 40D KBU 1M32G	Version
Order No.	<a href="#">1787190000</a>	HDC enclosures, Installation size: 6, Protection degree: IP65, in plugged condition, Coupling housing, Side-locking clamp on lower side, high, Size of cable entries: M 32
GTIN (EAN)	4032248204533	
Qty.	1 ST	

## CH-HIAC-HIAD-06-0200-AC

**Weidmüller Interface GmbH & Co. KG**  
 Klingenbergstraße 26  
 D-32758 Detmold  
 Germany

www.weidmueller.com

### Accessories

Type	HDC 40D KBU 1M25G	Version
Order No.	<a href="#">1787200000</a>	HDC enclosures, Installation size: 6, Protection degree: IP65, in plugged condition, Coupling housing, Side-locking clamp on lower side, high, Size of cable entries: M 25
GTIN (EAN)	4032248204540	
Qty.	1 ST	
Type	HDC 40D KBU 1PG29G	Version
Order No.	<a href="#">1967670000</a>	HDC enclosures, Installation size: 6, Protection degree: IP65, in plugged condition, Coupling housing, Side-locking clamp on lower side, high, Size of cable entries: PG 29
GTIN (EAN)	4032248670178	
Qty.	1 ST	
Type	HDC 40D KBU 2M32G N	Version
Order No.	<a href="#">2545510000</a>	HDC enclosures, Installation size: 6, Protection degree: IP65, in plugged condition, Coupling housing, Side-locking clamp on lower side, high, Size of cable entries: PG 29
GTIN (EAN)	4050118558333	
Qty.	1 ST	
Type	HDC 40D KBU 1M25G N	Version
Order No.	<a href="#">2559890000</a>	HDC enclosures, Installation size: 6, Protection degree: IP65, in plugged condition, Coupling housing, Side-locking clamp on lower side, high, Size of cable entries: PG 29
GTIN (EAN)	4050118676440	
Qty.	1 ST	
Type	HDC 40D KBU 1M32G N	Version
Order No.	<a href="#">2559900000</a>	HDC enclosures, Installation size: 6, Protection degree: IP65, in plugged condition, Coupling housing, Side-locking clamp on lower side, high, Size of cable entries: PG 29
GTIN (EAN)	4050118673265	
Qty.	1 ST	

### Bulkhead housing



The special die-cast alloy and the multi-layered surface sealing provide complete protection for the HDC housings.

The cleverly designed interlock system is manufactured from stainless steel. This guarantees a long lifespan with high resistance to corrosion and impact.

The housing interlock system provides integrated safety. Our unique, patented spring system provides the housing interlock with a secure grip and prevents accidental opening.

The laser marking allows for easy and quick identification. Each housing is permanently labelled with a laser marking so that each product can be quickly designated and positioned.

Weidmüller RockStar® IP 65 / NEMA Type 4X housings - your first choice for industrial housings with IP 65 protection.

### General ordering data

Type	HDC 16B ABU	Version
Order No.	<a href="#">1208600000</a>	HDC enclosures, Installation size: 6, Protection degree: IP65, in plugged condition, Bulkhead housing, Side-locking clamp on lower side, Side-locking clamp not replaceable, Standard, Size of cable entries: none
GTIN (EAN)	4008190881351	
Qty.	1 ST	
Type	HDC 16B ABU N	Version
Order No.	<a href="#">2488590000</a>	HDC enclosures, Installation size: 6, Protection degree: IP65, in plugged condition, Bulkhead housing, Side-locking clamp on lower side, Standard, Size of cable entries: none
GTIN (EAN)	4050118541526	
Qty.	1 ST	

## CH-HIAC-HIAD-06-0200-AC

**Weidmüller Interface GmbH & Co. KG**  
 Klingenbergstraße 26  
 D-32758 Detmold  
 Germany

www.weidmueller.com

## Accessories

### Cover



The special die-cast alloy and the multi-layered surface sealing provide complete protection for the HDC housings.

The cleverly designed interlock system is manufactured from stainless steel. This guarantees a long lifespan with high resistance to corrosion and impact.

The housing interlock system provides integrated safety. Our unique, patented spring system provides the housing interlock with a secure grip and prevents accidental opening.

The laser marking allows for easy and quick identification. Each housing is permanently labelled with a laser marking so that each product can be quickly designated and positioned.

Weidmüller RockStar® IP 65 / NEMA Type 4X housings - your first choice for industrial housings with IP 65 protection.

### General ordering data

Type	HDC 16B DMDQ 2QB	Version	
Order No.	<a href="#">1665270000</a>		HDC enclosures, Installation size: 6, Protection degree: IP65, in
GTIN (EAN)	4008190421977		plugged condition, Cover for upper part of housing, Side-locking
Qty.	1 ST		clamp on lower side, Standard, Size of cable entries: none

### Base housing



The special die-cast alloy and the multi-layered surface sealing provide complete protection for the HDC housings.

The cleverly designed interlock system is manufactured from stainless steel. This guarantees a long lifespan with high resistance to corrosion and impact.

The housing interlock system provides integrated safety. Our unique, patented spring system provides the housing interlock with a secure grip and prevents accidental opening.

The laser marking allows for easy and quick identification. Each housing is permanently labelled with a laser marking so that each product can be quickly designated and positioned.

Weidmüller RockStar® IP 65 / NEMA Type 4X housings - your first choice for industrial housings with IP 65 protection.

### General ordering data

Type	HDC 16B SBU 1PG21G	Version	
Order No.	<a href="#">1656720000</a>		HDC enclosures, Installation size: 6, Protection degree: IP65, in
GTIN (EAN)	4008190409739		plugged condition, Base housing, Side-locking clamp on lower side,
Qty.	1 ST		Standard, Size of cable entries: PG 21
Type	HDC 16B SBU 2PG21G	Version	
Order No.	<a href="#">1656730000</a>		HDC enclosures, Installation size: 6, Protection degree: IP65, in
GTIN (EAN)	4008190409746		plugged condition, Base housing, Side-locking clamp on lower side,
Qty.	1 ST		Standard, Size of cable entries: PG 21

## CH-HIAC-HIAD-06-0200-AC

**Weidmüller Interface GmbH & Co. KG**  
 Klingenbergstraße 26  
 D-32758 Detmold  
 Germany

www.weidmueller.com

## Accessories

Type	HDC 40D SBU 2PG21G	Version
Order No.	<a href="#">1656810000</a>	HDC enclosures, Installation size: 6, Protection degree: IP65, in
GTIN (EAN)	4008190409821	plugged condition, Base housing, Side-locking clamp on lower side,
Qty.	1 ST	high, Size of cable entries: PG 21
Type	HDC 40D SBU 1PG29G	Version
Order No.	<a href="#">1656830000</a>	HDC enclosures, Installation size: 6, Protection degree: IP65, in
GTIN (EAN)	4008190409845	plugged condition, Base housing, Side-locking clamp on lower side,
Qty.	1 ST	high, Size of cable entries: PG 29
Type	HDC 40D SBU 2PG29G	Version
Order No.	<a href="#">1656840000</a>	HDC enclosures, Installation size: 6, Protection degree: IP65, in
GTIN (EAN)	4008190409852	plugged condition, Base housing, Side-locking clamp on lower side,
Qty.	1 ST	high, Size of cable entries: PG 29
Type	HDC 40D SBU 2M32G	Version
Order No.	<a href="#">1787110000</a>	HDC enclosures, Installation size: 6, Protection degree: IP65, in
GTIN (EAN)	4032248204458	plugged condition, Base housing, Side-locking clamp on lower side,
Qty.	1 ST	high, Size of cable entries: M 32
Type	HDC 40D SBU 2M25G	Version
Order No.	<a href="#">1787120000</a>	HDC enclosures, Installation size: 6, Protection degree: IP65, in
GTIN (EAN)	4032248204465	plugged condition, Base housing, Side-locking clamp on lower side,
Qty.	1 ST	high, Size of cable entries: M 25
Type	HDC 16B SBU 2M25G	Version
Order No.	<a href="#">1788240000</a>	HDC enclosures, Installation size: 6, Protection degree: IP65, in
GTIN (EAN)	4032248205776	plugged condition, Base housing, Side-locking clamp on lower side,
Qty.	1 ST	Standard, Size of cable entries: M 25
Type	HDC 16B SBU 1M25G	Version
Order No.	<a href="#">1899880000</a>	HDC enclosures, Installation size: 6, Protection degree: IP65, in
GTIN (EAN)	4032248520718	plugged condition, Base housing, Side-locking clamp on lower side,
Qty.	1 ST	Standard, Size of cable entries: M 25
Type	HDC 40D SBU 1M25G	Version
Order No.	<a href="#">1902970000</a>	HDC enclosures, Installation size: 6, Protection degree: IP65, in
GTIN (EAN)	4032248592951	plugged condition, Base housing, Side-locking clamp on lower side,
Qty.	1 ST	high, Size of cable entries: M 25
Type	HDC 40D SBU 1M32G	Version
Order No.	<a href="#">1902990000</a>	HDC enclosures, Installation size: 6, Protection degree: IP65, in
GTIN (EAN)	4032248592968	plugged condition, Base housing, Side-locking clamp on lower side,
Qty.	1 ST	high, Size of cable entries: M 32
Type	HDC 16B SBU 1M25G N	Version
Order No.	<a href="#">2560740000</a>	HDC enclosures, Installation size: 6, Protection degree: IP65, in
GTIN (EAN)	4050118673234	plugged condition, Base housing, Side-locking clamp on lower side,
Qty.	1 ST	Standard, Size of cable entries: M 25
Type	HDC 40D SBU 1PG29G N	Version
Order No.	<a href="#">2560770000</a>	HDC enclosures, Installation size: 6, Protection degree: IP65, in
GTIN (EAN)	4050118893595	plugged condition, Base housing, Side-locking clamp on lower side,
Qty.	1 ST	high, Size of cable entries: PG 21
Type	HDC 16B SBU 2M25G N	Version
Order No.	<a href="#">2560930000</a>	HDC enclosures, Installation size: 6, Protection degree: IP65, in
GTIN (EAN)	4050118673531	plugged condition, Base housing, Side-locking clamp on lower side,
Qty.	1 ST	Standard, Size of cable entries: M 25
Type	HDC 16B SBU 1PG21G N	Version
Order No.	<a href="#">2560940000</a>	HDC enclosures, Installation size: 6, Protection degree: IP65, in
GTIN (EAN)	4050118676716	plugged condition, Base housing, Side-locking clamp on lower side,
Qty.	1 ST	Standard, Size of cable entries: PG 21

## CH-HIAC-HIAD-06-0200-AC

**Weidmüller Interface GmbH & Co. KG**  
 Klingenbergstraße 26  
 D-32758 Detmold  
 Germany

[www.weidmueller.com](http://www.weidmueller.com)

## Accessories

Type	HDC 16B SBU 2PG21G N	Version
Order No.	<a href="#">2560950000</a>	HDC enclosures, Installation size: 6, Protection degree: IP65, in
GTIN (EAN)	4050118676921	plugged condition, Base housing, Side-locking clamp on lower side,
Qty.	1 ST	Standard, Size of cable entries: PG 21
Type	HDC 40D SBU 2M25G N	Version
Order No.	<a href="#">2561020000</a>	HDC enclosures, Installation size: 6, Protection degree: IP65, in
GTIN (EAN)	4050118676914	plugged condition, Base housing, Side-locking clamp on lower side,
Qty.	1 ST	high, Size of cable entries: PG 21
Type	HDC 40D SBU 1M32G N	Version
Order No.	<a href="#">2561030000</a>	HDC enclosures, Installation size: 6, Protection degree: IP65, in
GTIN (EAN)	4050118676464	plugged condition, Base housing, Side-locking clamp on lower side,
Qty.	1 ST	high, Size of cable entries: PG 21
Type	HDC 40D SBU 2M32G N	Version
Order No.	<a href="#">2561040000</a>	HDC enclosures, Installation size: 6, Protection degree: IP65, in
GTIN (EAN)	4050118676457	plugged condition, Base housing, Side-locking clamp on lower side,
Qty.	1 ST	high, Size of cable entries: PG 21