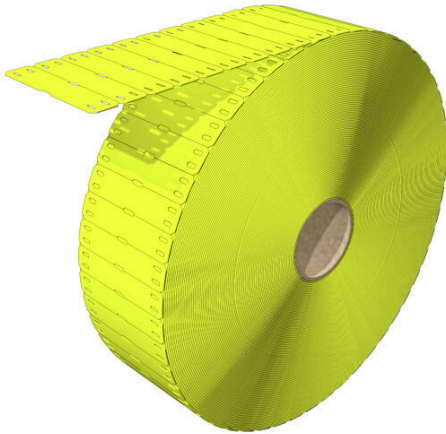


**SFX 11/60 MM BP GE**

**Weidmüller Interface GmbH & Co. KG**  
Klingenbergstraße 26  
D-32758 Detmold  
Germany

[www.weidmueller.com](http://www.weidmueller.com)

**Highly flexible: SFX**

SFX markers are the preferred choice for labelling cables if you prefer the classic cable tie solution. Cables do not always run in a straight line. The material used in SFX markers addresses this fact with highly flexible polyurethane. The marker follows each curve of the cable and latches on with ease.

**General ordering data**

Version	SlimFix, Conductor and cable markers, 7 - 40 mm, 60 x 13 mm, yellow
Order No.	<a href="#">2712120000</a>
Type	SFX 11/60 MM BP GE
GTIN (EAN)	4050118749816
Qty.	6000 items

## SFX 11/60 MM BP GE

**Weidmüller Interface GmbH & Co. KG**  
 Klingenbergstraße 26  
 D-32758 Detmold  
 Germany

www.weidmueller.com

## Technical data

### Approvals

ROHS	Conform
------	---------

### Dimensions and weights

Depth	0.6 mm	Depth (inches)	0.0236 inch
Height	60 mm	Height (inches)	2.3622 inch
Width	13 mm	Width (inches)	0.5118 inch
Net weight	0.46 g		

### Temperatures

Operating temperature range	-40...90 °C
-----------------------------	-------------

### Environmental Product Compliance

RoHS Compliance Status	Compliant without exemption
REACH SVHC	No SVHC above 0.1 wt%

### General data

Type of printing	neutral	Version	halogen-free
Width	13 mm	UL 94 flammability rating	HB
Operating temperature range, max.	90 °C	Operating temperature range, min.	-40 °C
Colour	yellow	Halogen	No
Basic material	Polyurethane	Printed characters	without
Size of labelling field	44 x 10.5 mm	compatible printer	<a href="#">THM MULTIMARK</a> , <a href="#">THM MULTIMARK PLUS</a>
Operating temperature range	-40...90 °C	Number per roll	1000

### Conductor and cable markers

Halogen	No	Conductor cross-section, max.	500 mm <sup>2</sup>
Conductor cross-section, min.	16 mm <sup>2</sup>	Conductor O.D., max.	40 mm
Conductor O.D., min.	7 mm	Text field width	44 mm
Cable tie passage	Flat	Text field height	10.5 mm
Conductor O.D.	7 - 40 mm	Suitable cable tie	Plastic
Cross-section for connected wire	16 - 500 mm <sup>2</sup>		

### Classifications

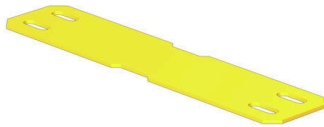
ETIM 8.0	EC001530	ETIM 9.0	EC001530
ETIM 10.0	EC001530	ECLASS 14.0	27-28-11-02
ECLASS 15.0	27-28-11-02		

**SFX 11/60 MM BP GE**

**Weidmüller Interface GmbH & Co. KG**  
Klingenbergstraße 26  
D-32758 Detmold  
Germany

[www.weidmueller.com](http://www.weidmueller.com)

**Drawings**



## SFX 11/60 MM BP GE

**Weidmüller Interface GmbH & Co. KG**  
Klingenbergstraße 26  
D-32758 Detmold  
Germany

[www.weidmueller.com](http://www.weidmueller.com)

## Accessories

### Ink ribbons



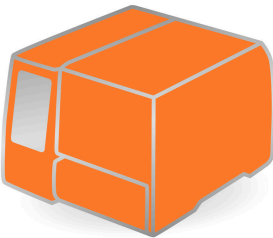
These printers produce excellent printing results thanks to the thermal transfer technique. Different materials and the user-friendly printing system under Windows optimise marking efforts.

#### General ordering data

Type	RIBBON MM 76/360 SW	Version
Order No.	<a href="#">2005080000</a>	Ink ribbon
GTIN (EAN)	4050118389951	
Qty.	1 ST	

Type	RIBBON MM 110/360 SW	Version
Order No.	<a href="#">2005070000</a>	Ink ribbon
GTIN (EAN)	4050118390049	
Qty.	1 ST	

### THM MULTIMARK



These printers produce excellent printing results thanks to the thermal transfer technique. Different materials and the user-friendly printing system under Windows optimise marking efforts.

#### General ordering data

Type	THM MMP EXT.RH	Version
Order No.	<a href="#">1302920000</a>	
GTIN (EAN)	4050118102307	
Qty.	1 ST	