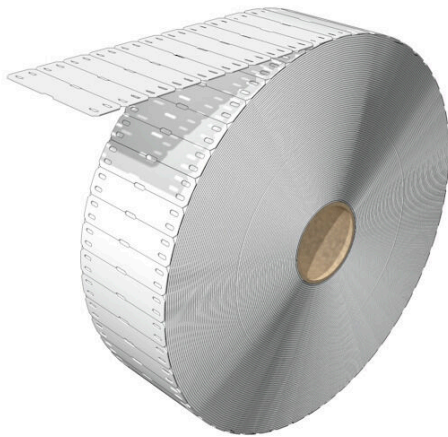


**SFX 11/60 MM BP WS****Weidmüller Interface GmbH & Co. KG**

Klingenbergstraße 26

D-32758 Detmold

Germany

[www.weidmueller.com](http://www.weidmueller.com)**Highly flexible: SFX**

SFX markers are the preferred choice for labelling cables if you prefer the classic cable tie solution. Cables do not always run in a straight line. The material used in SFX markers addresses this fact with highly flexible polyurethane. The marker follows each curve of the cable and latches on with ease.

**General ordering data**

Version	SlimFix, Conductor and cable markers, 7 - 40 mm, 60 x 13 mm, white
Order No.	<a href="#">2712110000</a>
Type	SFX 11/60 MM BP WS
GTIN (EAN)	4050118749823
Qty.	6000 items

**SFX 11/60 MM BP WS**

**Weidmüller Interface GmbH & Co. KG**  
 Klingenbergstraße 26  
 D-32758 Detmold  
 Germany

www.weidmueller.com

**Technical data**

**Approvals**

ROHS Conform

**Dimensions and weights**

Depth	0.6 mm	Depth (inches)	0.0236 inch
Height	60 mm	Height (inches)	2.3622 inch
Width	13 mm	Width (inches)	0.5118 inch
Net weight	0.55 g		

**Temperatures**

Operating temperature range -40...90 °C

**Environmental Product Compliance**

RoHS Compliance Status Compliant without exemption  
 REACH SVHC No SVHC above 0.1 wt%

**General data**

Type of printing	neutral	Version	halogen-free
Width	13 mm	UL 94 flammability rating	HB
Operating temperature range, max.	90 °C	Operating temperature range, min.	-40 °C
Colour	white	Halogen	No
Basic material	Polyurethane	Printed characters	without
Size of labelling field	44 x 10.5 mm	compatible printer	<a href="#">THM MULTIMARK</a> , <a href="#">THM MULTIMARK PLUS</a>
Operating temperature range	-40...90 °C	Number per roll	1000

**Conductor and cable markers**

Halogen	No	Conductor cross-section, max.	500 mm <sup>2</sup>
Conductor cross-section, min.	16 mm <sup>2</sup>	Conductor O.D., max.	40 mm
Conductor O.D., min.	7 mm	Text field width	44 mm
Cable tie passage	Flat	Text field height	10.5 mm
Conductor O.D.	7 - 40 mm	Suitable cable tie	Plastic
Cross-section for connected wire	16 - 500 mm <sup>2</sup>		

**Classifications**

ETIM 8.0	EC001530	ETIM 9.0	EC001530
ETIM 10.0	EC001530	ECLASS 14.0	27-28-11-02
ECLASS 15.0	27-28-11-02		

**SFX 11/60 MM BP WS**

**Weidmüller Interface GmbH & Co. KG**  
Klingenbergstraße 26  
D-32758 Detmold  
Germany

[www.weidmueller.com](http://www.weidmueller.com)

**Drawings**

